

# 1 W High-Voltage Switchmode Regulator

## DESCRIPTION

The Si9108 high-voltage switchmode regulator is a monolithic BiC/DMOS integrated circuit which contains most of the components necessary to implement a high-efficiency dc/dc converter in ISDN terminals up to 3 watts. A 0.5 mA max supply current makes possible the design of a dc/dc converter with 60 % efficiency at 25 mW, therefore meeting the recommended performance under the CCITT I.430 specifications.

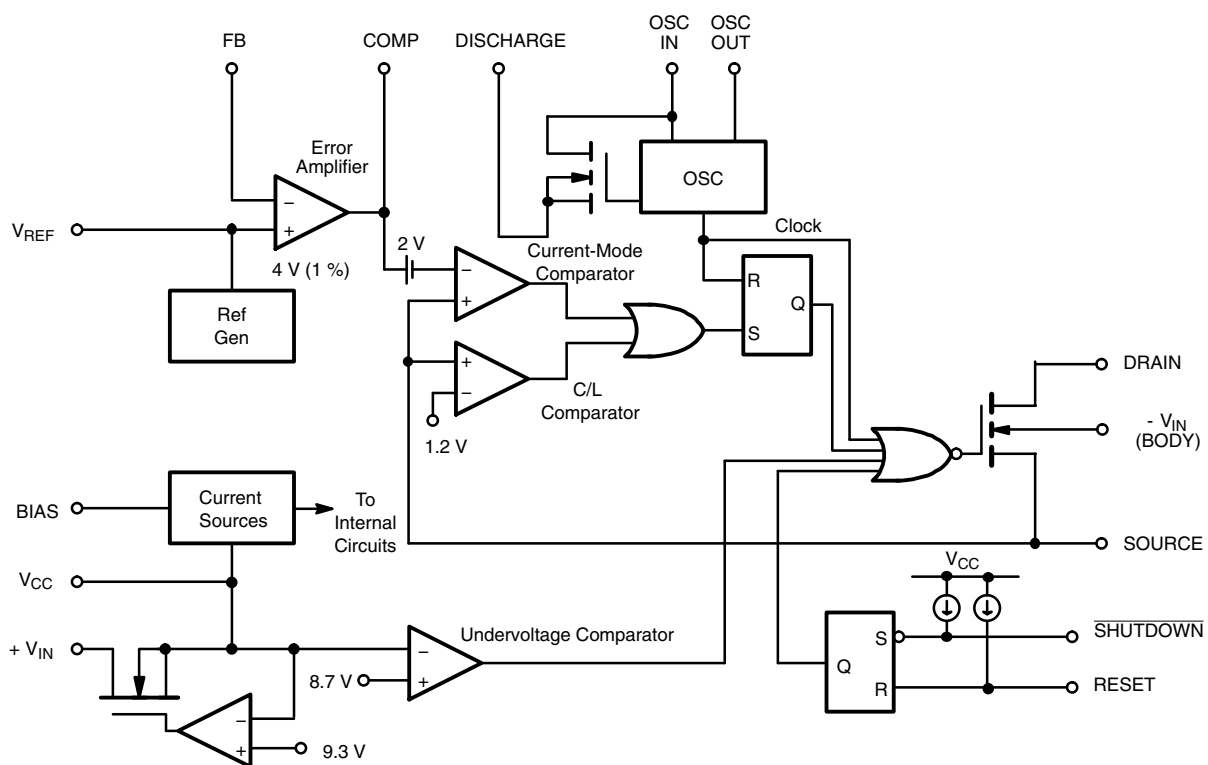
This device may be used with an appropriate transformer to implement isolated flyback power converter topologies to provide single or multiple regulated dc outputs (i.e.,  $\pm 5$  V).

The Si9108 is available in both standard and lead (Pb)-free 16-pin wide-body SOIC, 14-pin plastic DIP and 20-pin PLCC packages which are specified to operate over the industrial temperature range of - 40 °C to 85 °C.

## FEATURES

- CCITT Compatible
- Current-Mode Control
- Low Power Consumption (less than 5 mW)
- 10 to 120 V Input Range
- 200 V, 250 mA MOSFET
- Internal Start-Up Circuit
- $\overline{\text{SHUTDOWN}}$  and RESET
- Maximum Duty Cycle of 99.9 %

## FUNCTIONAL BLOCK DIAGRAM



| ABSOLUTE MAXIMUM RATINGS  |   |                                    |                      |
|---|---|------------------------------------|----------------------|
| Parameter   |   | Limit                              | Unit                 |
| Voltages Referenced to - $V_{IN}$ ( $V_{CC} < +V_{IN} + 0.3\text{ V}$ ) |   |                                    |                      |
| $V_{CC}$  |   | 15                                 | V                    |
| $+V_{IN}$   |   | 120                                |                      |
| $V_{DS}$  |   | 200                                |                      |
| $I_D$ (Peak) (300 $\mu\text{s}$ pulse, 2 % duty cycle)                  |   | 2                                  | A                    |
| $I_D$ (rms)   |   | 250                                | mA                   |
| Logic Inputs (RESET, SHUTDOWN, OSC IN)                                  |   | - 0.3 V to $V_{CC} + 0.3\text{ V}$ | V                    |
| Linear Inputs (FEEDBACK, SOURCE)  |   | - 0.3 V to 7 V                     |                      |
| HV Pre-Regulator Input Current (continuous)                             |   | 5                                  | mA                   |
| Storage Temperature   |   | - 65 to 125                        | $^{\circ}\text{C}$   |
| Operating Temperature   |   | - 40 to 85                         |                      |
| Junction Temperature ( $T_J$ )  |   | 150                                |                      |
| Power Dissipation (Package) <sup>a</sup>                                | 14-Pin Plastic DIP (J Suffix) <sup>b</sup>            | 750                                | mW                   |
|   | 16-Pin Plastic Wide-Body SOIC (W Suffix) <sup>c</sup> | 900                                |                      |
|   | 20-Pin PLCC (N Suffix) <sup>d</sup>                   | 1400                               |                      |
| Thermal Impedance ( $\Theta_{JA}$ )                                     | 14-Pin Plastic DIP                                    | 167                                | $^{\circ}\text{C/W}$ |
|   | 16-Pin Plastic Wide-Body SOIC                         | 140                                |                      |
|   | 20-Pin PLCC   | 90                                 |                      |

## Notes:

a. Device Mounted with all leads soldered or welded to PC board.

b. Derate 6 mW/ $^{\circ}\text{C}$  above 25  $^{\circ}\text{C}$ .c. Derate 7.2 mW/ $^{\circ}\text{C}$  above 25  $^{\circ}\text{C}$ .d. Derate 11.2 mW/ $^{\circ}\text{C}$  above 25  $^{\circ}\text{C}$ .

Stresses beyond those listed under "Absolute Maximum Ratings" may cause permanent damage to the device. These are stress ratings only, and functional operation of the device at these or any other conditions beyond those indicated in the operational sections of the specifications is not implied. Exposure to absolute maximum rating conditions for extended periods may affect device reliability.

| RECOMMENDED OPERATING RANGE       |  |                               |      |
|-----------------------------------|--|-------------------------------|------|
| Parameter                         |  | Limit                         | Unit |
| Voltages Referenced to - $V_{IN}$ |  |                               |      |
| $V_{CC}$                          |  | 10 V to 13.5 V                | V    |
| $+V_{IN}$                         |  | 10 V to 120 V                 |      |
| $f_{OSC}$                         |  | 40 kHz to 1 MHz               |      |
| $R_{OSC}$                         |  | 25 k $\Omega$ to 1 M $\Omega$ |      |
| Linear Inputs                     |  | 0 to $V_{CC} - 3\text{ V}$    | V    |
| Digital Inputs                    |  | 0 to $V_{CC}$                 |      |

| SPECIFICATIONS <sup>a</sup>          |                   |   |                   |                  |                  |                  |        |
|--------------------------------------|-------------------|---|-------------------|------------------|------------------|------------------|--------|
| Parameter                            | Symbol            | Test Conditions<br>Unless Otherwise Specified<br>DISCHARGE = - V <sub>IN</sub> = 0 V<br>V <sub>CC</sub> = 10 V, + V <sub>IN</sub> = 48 V<br>R <sub>BIAS</sub> = 820 kΩ, R <sub>OSC</sub> = 910 kΩ | Limits            |                  |                  |                  | Unit   |
|                                      |                   |   | Temp <sup>b</sup> | Min <sup>c</sup> | Typ <sup>d</sup> | Max <sup>c</sup> |        |
| Reference                            |                   |   |                   |                  |                  |                  |        |
| Output Voltage                       | V <sub>R</sub>    | OSC IN = - V <sub>IN</sub> (OSC Disabled)<br>R <sub>L</sub> = 10 MΩ   | Room              | 3.92             | 4.00             | 4.08             | V      |
| Output Impedance <sup>e</sup>        | Z <sub>OUT</sub>  | OSC IN = - V <sub>IN</sub>  | Room              | 15               | 300              | 45               | kΩ     |
| Short Circuit Current                | I <sub>SREF</sub> | OSC IN = - V <sub>IN</sub> , V <sub>REF</sub> = - V <sub>IN</sub>   | Room              | 70               | 100              | 130              | μA     |
| Temperature Stability <sup>e</sup>   | T <sub>REF</sub>  | OSC IN = - V <sub>IN</sub>  | Full              |                  | 0.25             | 1.0              | mV/°C  |
| Long Term Stability <sup>e</sup>     |                   | t = 1000 hrs, T <sub>A</sub> = 125 °C   | Room              |                  | 5.00             | 25.00            | mV     |
| Oscillator                           |                   |   |                   |                  |                  |                  |        |
| Maximum Frequency <sup>e</sup>       | f <sub>MAX</sub>  | R <sub>OSC</sub> = 0  | Room              | 1                | 3                |                  | MHz    |
| Initial Accuracy                     | f <sub>OSC</sub>  | See Note e  | Room              | 32               | 40               | 48               | kHz    |
| Voltage Stability                    | Δf/f              | Δf/f = f (13.5 V) - f (9.5 V) / f (9.5 V)   | Room              |                  | 10               | 15               | %      |
| Temperature Coefficient <sup>e</sup> | T <sub>OSC</sub>  |   | Full              |                  | 200              | 500              | ppm/°C |

**SPECIFICATIONS<sup>a</sup>**

| Parameter  | Symbol               | Test Conditions<br>Unless Otherwise Specified<br>DISCHARGE = - V <sub>IN</sub> = 0 V<br>V <sub>CC</sub> = 10 V, + V <sub>IN</sub> = 48 V<br>R <sub>BIAS</sub> = 820 kΩ, R <sub>OSC</sub> = 910 kΩ | Limits            |                  |                  |                  | Unit |
|--|----------------------|---|-------------------|------------------|------------------|------------------|------|
|  |                      |   | Temp <sup>b</sup> | Min <sup>c</sup> | Typ <sup>d</sup> | Max <sup>c</sup> |      |
| Error Amplifier  |                      |   |                   |                  |                  |                  |      |
| Feedback Input Voltage                                   | V <sub>FB</sub>      | FB Tied to COMP<br>OSC IN = - V <sub>IN</sub> (OSC Disabled)  | Room              | 3.96             | 4                | 4.04             | V    |
| Input BIAS Current                                       | I <sub>FB</sub>      | OSC IN = - V <sub>IN</sub> , V <sub>FB</sub> = 4 V  | Room              |                  | 25               | 500              | nA   |
| Open Loop Voltage Gain <sup>e</sup>                      | A <sub>VOL</sub>     | OSC IN = - V <sub>IN</sub> (OSC Disabled)   | Room              | 60               | 80               |                  | dB   |
| Input Offset Voltage                                     | V <sub>OS</sub>      | OSC IN = - V <sub>IN</sub>  | Room              |                  | ± 15             | ± 40             | mV   |
| Unity Gain Bandwidth <sup>e</sup>                        | BW                   |   | Room              | 0.5              | 0.8              |                  | MHz  |
| Dynamic Output Impedance                                 | Z <sub>OUT</sub>     |   | Room              |                  | 1                |                  | kΩ   |
| Output Current   | I <sub>OUT</sub>     | Source (V <sub>FB</sub> = 3.4 V)  | Room              |                  | - 1.2            | - 0.32           | mA   |
|  |                      | Sink (V <sub>FB</sub> = 4.5 V)  | Room              | 0.05             | 0.08             |                  |      |
| Power Supply Rejection                                   | PSRR                 | 10 V ≤ V <sub>CC</sub> ≤ 13.5 V   | Room              |                  | 70               |                  | dB   |
| PWM  |                      |   |                   |                  |                  |                  |      |
| Maximum Duty Cycle                                       | D <sub>MAX</sub>     |   | Room              | 99.0             | 99.6             | 99.9             | %    |
| Dead Time  |                      |   | Room              |                  | 100              |                  | ns   |
| Minimum Duty Cycle                                       | D <sub>MIN</sub>     |   | Room              |                  |                  | 0                | %    |
| Minimum Pulse Width Before Pulse Drops Out               |                      |   | Room              |                  | 110              | 175              | ns   |
| Current Limit  |                      |   |                   |                  |                  |                  |      |
| Threshold Voltage  | V <sub>SOURCE</sub>  | R <sub>L</sub> = 100 Ω from DRAIN to V <sub>CC</sub><br>V <sub>FB</sub> = 0 V   | Room              | 0.8              | 1.0              | 1.2              | V    |
| Delay to Output <sup>e</sup>                             | t <sub>d</sub>       | R <sub>L</sub> = 100 Ω from DRAIN to V <sub>CC</sub><br>V <sub>SOURCE</sub> = 1.5 V, See Figure 1   | Room              |                  | 200              | 300              | ns   |
| Input Voltage  | + V <sub>IN</sub>    | I <sub>IN</sub> = 10 μA   | Room              | 120              |                  |                  | V    |
| Input Leakage Current                                    | + I <sub>IN</sub>    | V <sub>CC</sub> ≥ 10 V  | Room              |                  |                  | 10               | μA   |
| Pre-Regulator Start-Up Current                           | I <sub>START</sub>   | Pulse Width ≤ 300 μs, V <sub>CC</sub> = 7 V   | Room              | 8                | 15               |                  | mA   |
| V <sub>CC</sub> Pre-Regulator Turn-Off Threshold Voltage | V <sub>REG</sub>     | I <sub>PRE-REGULATOR</sub> = 10 μA  | Room              | 7.5              | 9.3              | 9.7              | V    |
| Undervoltage Lockout                                     | V <sub>UVLO</sub>    | R <sub>L</sub> = 100 Ω from DRAIN to V <sub>CC</sub><br>See Detailed Description  | Room              | 7.0              | 8.7              | 9.2              |      |
| V <sub>REG</sub> - V <sub>UVLO</sub>                     | V <sub>DELTA</sub>   |   | Room              | 0.25             | 0.5              |                  |      |
| Supply   |                      |   |                   |                  |                  |                  |      |
| Supply Current   | I <sub>CC</sub>      |   | Room              |                  | 0.35             | 0.5              | mA   |
| Bias Current   | I <sub>BIAS</sub>    |   | Room              |                  | 7.5              |                  | μA   |
| SHUTDOWN Delay   | t <sub>SD</sub>      | V <sub>SOURCE</sub> = - V <sub>IN</sub> , See Figure 2  | Room              |                  | 50               | 100              | ns   |
| SHUTDOWN Pulse Width                                     | t <sub>SW</sub>      | See Figure 3  | Room              | 50               |                  |                  |      |
| RESET Pulse Width  | t <sub>RW</sub>      |   | Room              | 50               |                  |                  |      |
| Latching Pulse Width SHUTDOWN and RESET Low              | t <sub>LW</sub>      |   | Room              | 25               |                  |                  |      |
| Input Low Voltage  | V <sub>IL</sub>      |   | Room              |                  |                  | 2.0              | V    |
| Input High Voltage                                       | V <sub>IH</sub>      |   | Room              | 8.0              |                  |                  |      |
| Input Current Input, Voltage High                        | I <sub>IH</sub>      | V <sub>IN</sub> = 10 V  | Room              |                  | 1                | 5                | μA   |
| Input Current Input, Voltage Low                         | I <sub>IL</sub>      | V <sub>IN</sub> = 0 V   | Room              | - 35             | - 25             |                  |      |
| MOSFET Switch  |                      |   |                   |                  |                  |                  |      |
| Breakdown Voltage  | V <sub>BR(DSS)</sub> | I <sub>DRAIN</sub> = 100 μA   | Full              | 200              | 220              |                  | V    |
| Drain-Source On Resistance <sup>g</sup>                  | r <sub>DS(on)</sub>  | I <sub>DRAIN</sub> = 100 mA   | Room              |                  | 5                | 7                | Ω    |
| Drain Off Leakage Current                                | I <sub>DSS</sub>     | V <sub>DRAIN</sub> = 100 V  | Room              |                  |                  | 10               | μA   |
| Drain Capacitance  | C <sub>DS</sub>      |   | Room              |                  | 35               |                  | pF   |

Notes:

a. Refer to PROCESS OPTION FLOWCHART for additional information.

b. Room = 25 °C, Cold and Hot = as determined by the operating temperature suffix.

c. The algebraic convention whereby the most negative value is a minimum and the most positive a maximum, is used in this data sheet.

d. Typical values are for DESIGN AID ONLY, not guaranteed nor subject to production testing.

e. Guaranteed by design, not subject to production test.

f.  $C_{STRAY}$  Pin 8 =  $\leq 5$  pF.g. Temperature coefficient of  $r_{DS(on)}$  is 0.75 % per °C, typical.

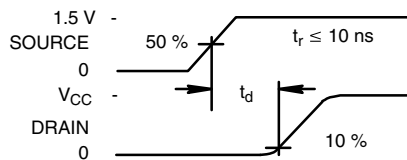
**TIMING WAVEFORMS**

Figure 1.

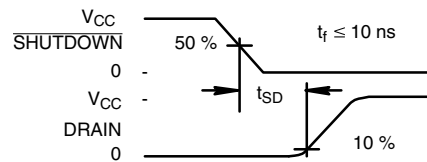


Figure 2.

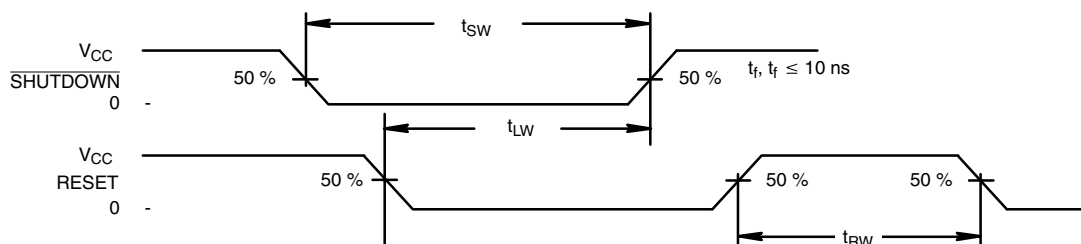


Figure 3.

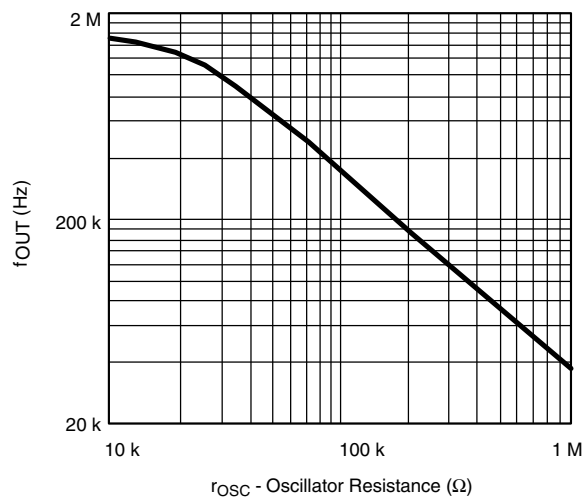
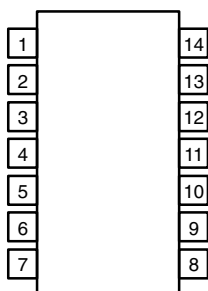
**TYPICAL CHARACTERISTICS**

Figure 4. Output Switching Frequency vs. Oscillator Resistance



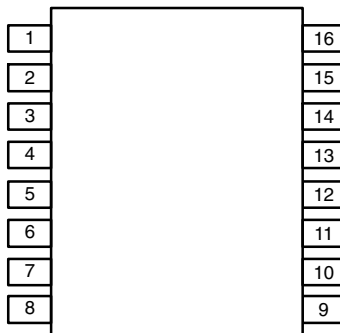
## PIN CONFIGURATIONS

PDIP-14



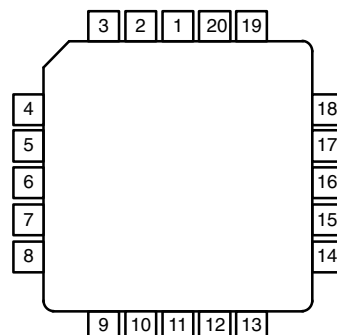
Top View

SO-16  
(Wide-Body)



Top View

PLCC-20



Top View

## PIN DESCRIPTION

| Function           | Pin Number         |             |                     |
|--------------------|--------------------|-------------|---------------------|
|                    | 14-Pin Plastic DIP | 16-Pin SOIC | 20-Pin PLCC         |
| SOURCE             | 4                  | 1           | 7                   |
| - $V_{IN}$         | 5                  | 2           | 8                   |
| $V_{CC}$           | 6                  | 4           | 9                   |
| OSC <sub>OUT</sub> | 7                  | 5           | 10                  |
| OSC <sub>IN</sub>  | 8                  | 6           | 11                  |
| DISCHARGE          | 9                  | 7           | 12                  |
| $V_{REF}$          | 10                 | 8           | 14                  |
| SHUTDOWN           | 11                 | 9           | 16                  |
| RESET              | 12                 | 10          | 17                  |
| COMP               | 13                 | 11          | 18                  |
| FB                 | 14                 | 12          | 20                  |
| BIAS               | 1                  | 13          | 2                   |
| + $V_{IN}$         | 2                  | 14          | 3                   |
| DRAIN              | 3                  | 16          | 5                   |
| NC                 |                    | 3, 15       | 1, 4, 6, 13, 15, 19 |

## ORDERING INFORMATION

| Standard Part Number                  | Lead (Pb)-free Part Number               | Package      | Temperature Range |
|---------------------------------------|--|--------------|-------------------|
| Si9108DJ02                            | Si9108DJ02-E3                            | PDIP-14      | - 40 to 85 °C     |
| Si9108DW                              |  | SOIC-16 (WB) |                   |
| Si9108DW-T1<br>(With Tape and Reel)   | Si9108DW-T1-E3<br>(With Tape and Reel)   |              |                   |
| Si9108DN02                            |  | PLCC-20      |                   |
| Si9108DN02-T1<br>(With Tape and Reel) | Si9108DN02-T1-E3<br>(With Tape and Reel) |              |                   |

## DETAILED DESCRIPTION

### Pre-Regulator/Start-Up Section

Due to the low quiescent current requirement of the Si9108 control circuitry, bias power can be supplied from the unregulated input power source, from an external regulated low-voltage supply, or from an auxiliary "bootstrap" winding on the output inductor or transformer.

When power is first applied during start-up,  $+V_{IN}$  will draw a constant current. The magnitude of this current is determined by a high-voltage depletion MOSFET device which is connected between  $+V_{IN}$  and  $V_{CC}$ . This start-up circuitry provides initial power to the IC by charging an external bypass capacitance connected to the  $V_{CC}$  pin. The constant current is disabled when  $V_{CC}$  exceeds 9.3 V. If  $V_{CC}$  is not forced to exceed the 9.3 V threshold, then  $V_{CC}$  will be regulated to a nominal value of 9.3 V by the pre-regulator circuit.

As the supply voltage rises toward the normal operating conditions, an internal undervoltage (UV) lockout circuit keeps the output MOSFET disabled until  $V_{CC}$  exceeds the undervoltage lockout threshold (typically 8.7 V). This guarantees that the control logic will be functioning properly and that sufficient gate drive voltage is available before the MOSFET turns on. The design of the IC is such that the undervoltage lockout threshold will not exceed the pre-regulator turn-off voltage. Power dissipation can be minimized by providing an external power source to  $V_{CC}$  such that the constant current source is always disabled.

### BIAS

To properly set the bias for the Si9108, a 820 k $\Omega$  resistor should be tied from BIAS to  $-V_{IN}$ . This determines the magnitude of bias current in all of the analog sections and the pull-up current for the  $\overline{\text{SHUTDOWN}}$  and RESET pins. The current flowing in the bias resistor is nominally 7.5  $\mu\text{A}$ .

### Reference Section

The reference section of the Si9108 consists of a temperature compensated buried zener and trimmable divider network. The output of the reference section is connected internally to the non-inverting input of the error amplifier. Nominal reference output voltage is 4 V. The trimming procedure that is used on the Si9108 brings the output of the error amplifier (which is configured for unity gain during trimming) to within  $\pm 1\%$  of 4 V. This automatically compensates for the input offset voltage in the error amplifier.

The output impedance of the reference section has been purposely made high so that a low impedance external voltage source can be used to override the internal voltage source, if desired, without otherwise altering the performance of the device.

### Error Amplifier

Closed-loop regulation is provided by the error amplifier, whose 1 k $\Omega$  dynamic output impedance enables it to be used with feedback compensation (unlike transconductance amplifiers). A MOS differential input stage provides for low input current. The noninverting input to the error amplifier ( $V_{REF}$ ) is internally connected to the output of the reference supply and should be bypassed with a small capacitor to ground.

### Oscillator Section



The oscillator consists of a ring of CMOS inverters, capacitors, and a capacitor discharge switch. Frequency is set by an external resistor between the OSC IN and OSC OUT pins. (See Typical Characteristics graph of resistor value vs. frequency.) The DISCHARGE pin should be tied to  $-V_{IN}$  for normal internal oscillator operation. For 98 % duty cycle, the discharge pin must be connected to  $-V_{IN}$  or can be connected to  $-V_{IN}$  through a resistor to set the dead time.

Remote synchronization can be accomplished by capacitive coupling of a synchronization pulse into the OSC IN terminal. For a 5 V pulse amplitude and 0.5  $\mu\text{s}$  pulse width, typical values would be 100 pF in series with 3 k $\Omega$  to OSC IN.

### $\overline{\text{SHUTDOWN}}$ and RESET

$\overline{\text{SHUTDOWN}}$  and RESET are intended for overriding the output MOSFET switch via external control logic. The two inputs are fed through a latch preceding the output switch. Depending on the logic state of RESET,  $\overline{\text{SHUTDOWN}}$  can be either a latched or unlatched input. The output is off whenever  $\overline{\text{SHUTDOWN}}$  is low. By simultaneously having  $\overline{\text{SHUTDOWN}}$  and RESET low, the latch is set and  $\overline{\text{SHUTDOWN}}$  has no effect until RESET goes high. (See the table below.)

**Table 1.** Truth Table for the  $\overline{\text{SHUTDOWN}}$  and RESET Pins

| $\overline{\text{SHUTDOWN}}$  | RESET   | Output                       |
|---|---|------------------------------|
| H   | H   | Normal Operation             |
| H   |  | Normal Operation (No Change) |
| L   | H   | Off (Not Latched)            |
| L   | L   | Off (Latched)                |
|  | L   | Off (Latched, No Change)     |

When power is first applied during start-up,  $+V_{IN}$  will draw a constant current. The magnitude of this current is determined by a high-voltage depletion MOSFET device which is connected between  $+V_{IN}$  and  $V_{CC}$ . This start-up circuitry provides initial power to the IC by charging an external bypass capacitance connected to the  $V_{CC}$  pin. The constant current is disabled when  $V_{CC}$  exceeds 9.3 V. If  $V_{CC}$  is not forced to exceed the 9.3 V threshold, then  $V_{CC}$  will be regulated to a nominal value of 9.3 V by the pre-regulator circuit.

## DETAIL DESCRIPTION (CONT'D)

Both pins have internal current source pull-ups and can be left disconnected when not in use. An added feature of the current sources is the ability to connect a capacitor and an open-collector driver to the SHUTDOWN pin to provide variable shutdown time.

## Output Switch

The output switch is a  $7\ \Omega$ , 200 V lateral DMOS transistor. Like discrete MOSFETs, the switch contains an intrinsic body-drain diode. However, the body contact in the Si9108 is connected internally to  $-V_{IN}$  and is independent of the SOURCE.

## APPLICATIONS

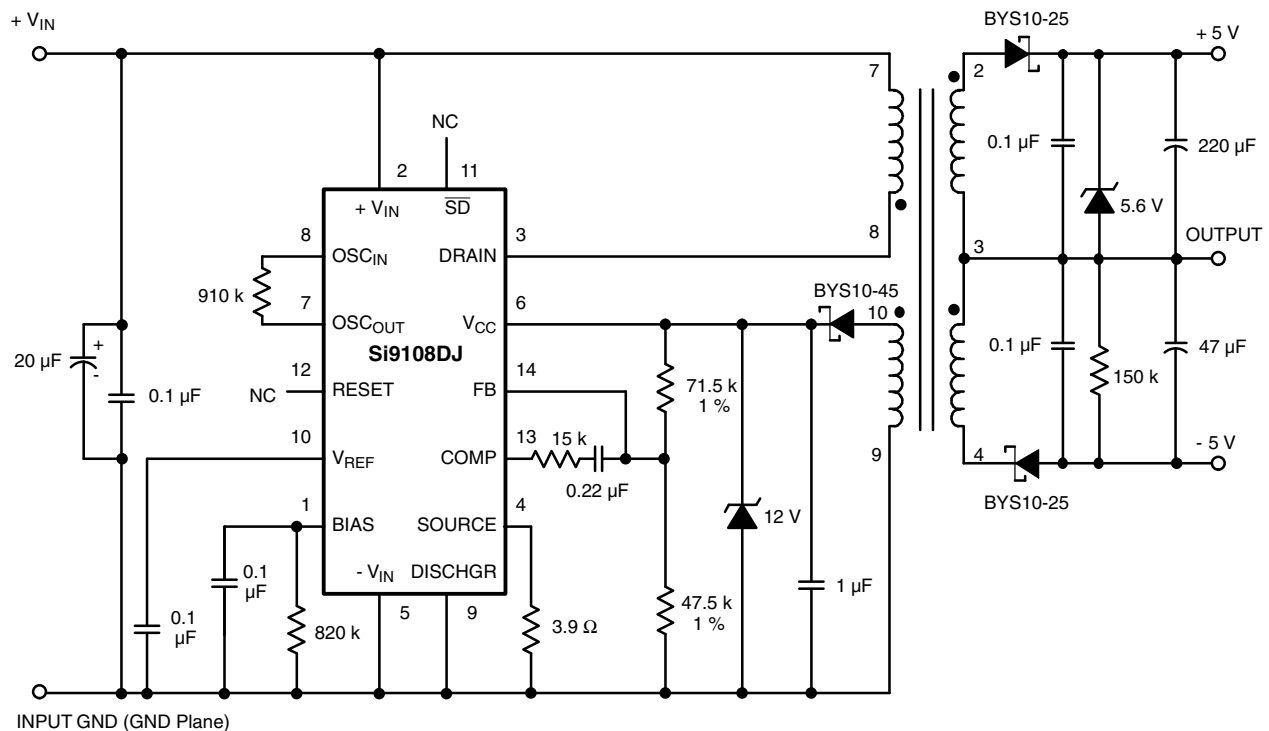
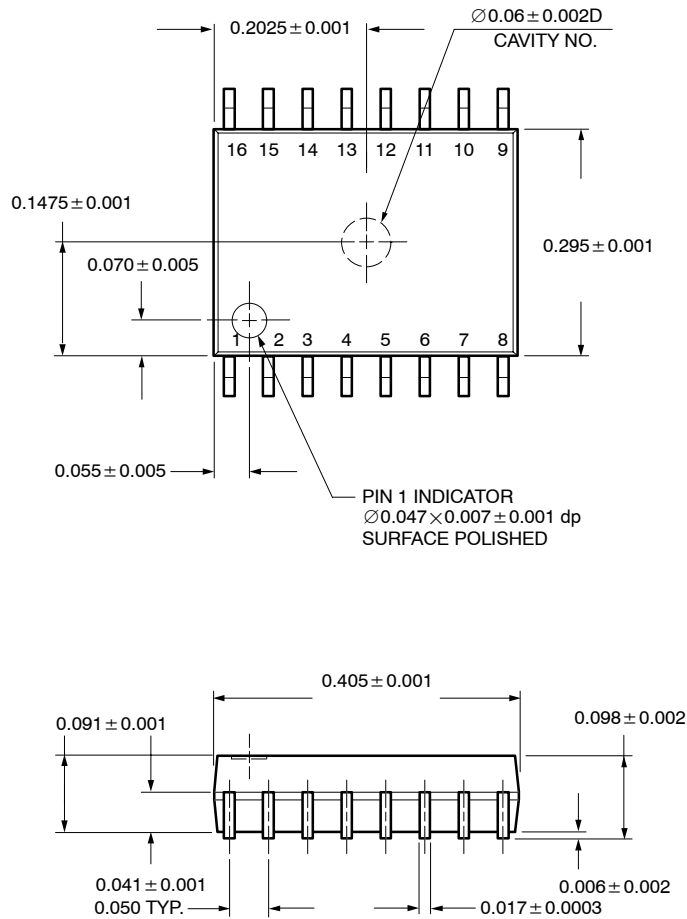


Figure 5. CCITT Compatible ISDN Terminal Power Supply

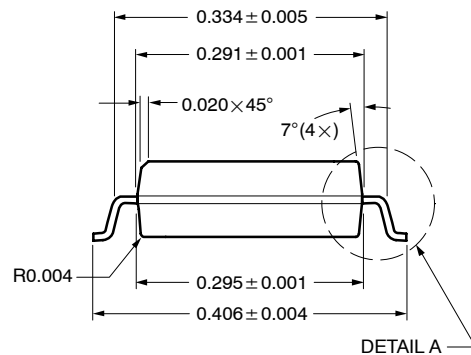
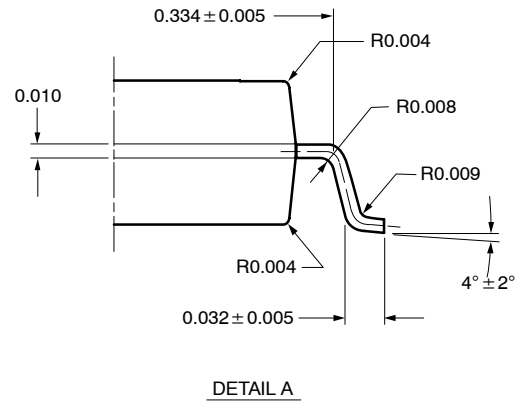


**SOIC (WIDE-BODY): 16-LEAD (POWER IC ONLY)**



All Dimensions In Inches

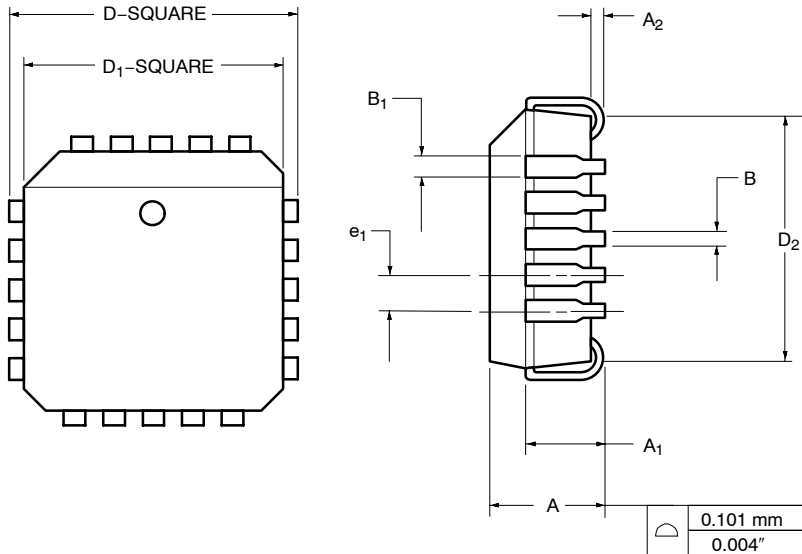
ECN: S-40079—Rev. A, 02-Feb-04  
DWG: 5910







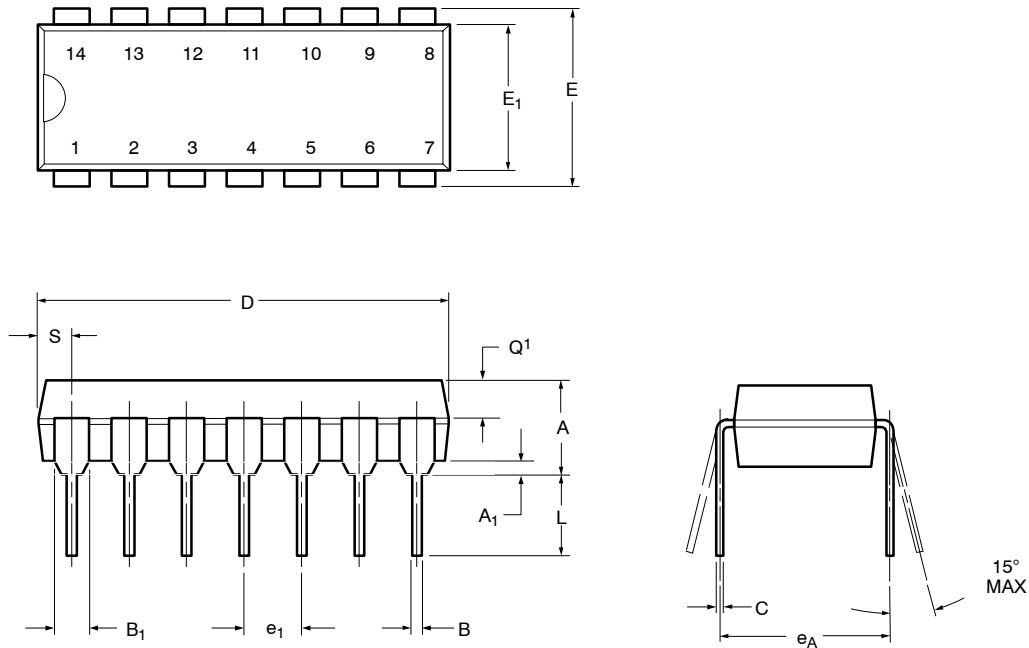
### PLCC: 20-LEAD (POWER IC ONLY)



| Dim   | MILLIMETERS |       | INCHES    |       |
|---|-------------|-------|-----------|-------|
|   | Min         | Max   | Min       | Max   |
| A   | 4.20        | 4.57  | 0.165     | 0.180 |
| A <sub>1</sub>                              | 2.29        | 3.04  | 0.090     | 0.120 |
| A <sub>2</sub>                              | 0.51        | –     | 0.020     | –     |
| B   | 0.331       | 0.553 | 0.013     | 0.021 |
| B <sub>1</sub>                              | 0.661       | 0.812 | 0.026     | 0.032 |
| D   | 9.78        | 10.03 | 0.385     | 0.395 |
| D <sub>1</sub>                              | 8.890       | 9.042 | 0.350     | 0.356 |
| D <sub>2</sub>                              | 7.37        | 8.38  | 0.290     | 0.330 |
| e <sub>1</sub>                              | 1.27 BSC    |       | 0.050 BSC |       |
| ECN: S-40081—Rev. A, 02-Feb-04<br>DWG: 5917 |             |       |           |       |



**PDIP: 14-LEAD (POWER IC ONLY)**



| Dim            | MILLIMETERS |       | INCHES |       |
|----------------|-------------|-------|--------|-------|
|                | Min         | Max   | Min    | Max   |
| A              | 3.81        | 5.08  | 0.150  | 0.200 |
| A <sub>1</sub> | 0.38        | 1.27  | 0.015  | 0.050 |
| B              | 0.38        | 0.51  | 0.015  | 0.020 |
| B <sub>1</sub> | 0.89        | 1.65  | 0.035  | 0.065 |
| C              | 0.20        | 0.30  | 0.008  | 0.012 |
| D              | 17.27       | 19.30 | 0.680  | 0.760 |
| E              | 7.62        | 8.26  | 0.300  | 0.325 |
| E <sub>1</sub> | 5.59        | 7.11  | 0.220  | 0.280 |
| e <sub>1</sub> | 2.29        | 2.79  | 0.090  | 0.110 |
| e <sub>A</sub> | 7.37        | 7.87  | 0.290  | 0.310 |
| L              | 2.79        | 3.81  | 0.110  | 0.150 |
| Q <sub>1</sub> | 1.27        | 2.03  | 0.050  | 0.080 |
| S              | 1.02        | 2.03  | 0.040  | 0.080 |

ECN: S-40081—Rev. A, 02-Feb-04  
DWG: 5919



## Disclaimer

ALL PRODUCT, PRODUCT SPECIFICATIONS AND DATA ARE SUBJECT TO CHANGE WITHOUT NOTICE TO IMPROVE RELIABILITY, FUNCTION OR DESIGN OR OTHERWISE.

Vishay Intertechnology, Inc., its affiliates, agents, and employees, and all persons acting on its or their behalf (collectively, "Vishay"), disclaim any and all liability for any errors, inaccuracies or incompleteness contained in any datasheet or in any other disclosure relating to any product.

Vishay makes no warranty, representation or guarantee regarding the suitability of the products for any particular purpose or the continuing production of any product. To the maximum extent permitted by applicable law, Vishay disclaims (i) any and all liability arising out of the application or use of any product, (ii) any and all liability, including without limitation special, consequential or incidental damages, and (iii) any and all implied warranties, including warranties of fitness for particular purpose, non-infringement and merchantability.

Statements regarding the suitability of products for certain types of applications are based on Vishay's knowledge of typical requirements that are often placed on Vishay products in generic applications. Such statements are not binding statements about the suitability of products for a particular application. It is the customer's responsibility to validate that a particular product with the properties described in the product specification is suitable for use in a particular application. Parameters provided in datasheets and / or specifications may vary in different applications and performance may vary over time. All operating parameters, including typical parameters, must be validated for each customer application by the customer's technical experts. Product specifications do not expand or otherwise modify Vishay's terms and conditions of purchase, including but not limited to the warranty expressed therein.

Hyperlinks included in this datasheet may direct users to third-party websites. These links are provided as a convenience and for informational purposes only. Inclusion of these hyperlinks does not constitute an endorsement or an approval by Vishay of any of the products, services or opinions of the corporation, organization or individual associated with the third-party website. Vishay disclaims any and all liability and bears no responsibility for the accuracy, legality or content of the third-party website or for that of subsequent links.

Except as expressly indicated in writing, Vishay products are not designed for use in medical, life-saving, or life-sustaining applications or for any other application in which the failure of the Vishay product could result in personal injury or death. Customers using or selling Vishay products not expressly indicated for use in such applications do so at their own risk. Please contact authorized Vishay personnel to obtain written terms and conditions regarding products designed for such applications.

No license, express or implied, by estoppel or otherwise, to any intellectual property rights is granted by this document or by any conduct of Vishay. Product names and markings noted herein may be trademarks of their respective owners.