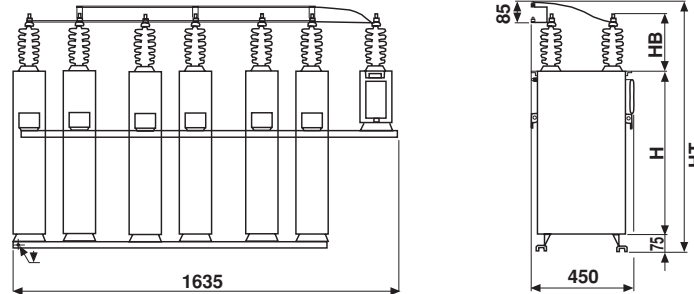


## High Voltage Power Capacitors

### TYPICAL ARRANGEMENTS



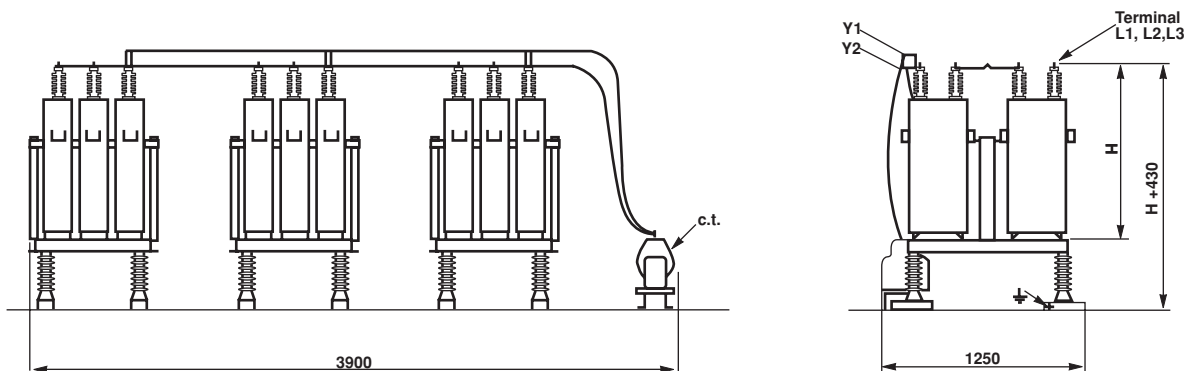
**Type: G00S31**

Maximum voltage: 24kV

Installation: indoor or outdoor

Connection: double star with unbalanced protection device

Protection level: IP 00



**Type: G00S12**

Voltage: > 24kV

Installation: indoor or outdoor

Connection: double star with unbalanced protection device

Protection level: IP 00

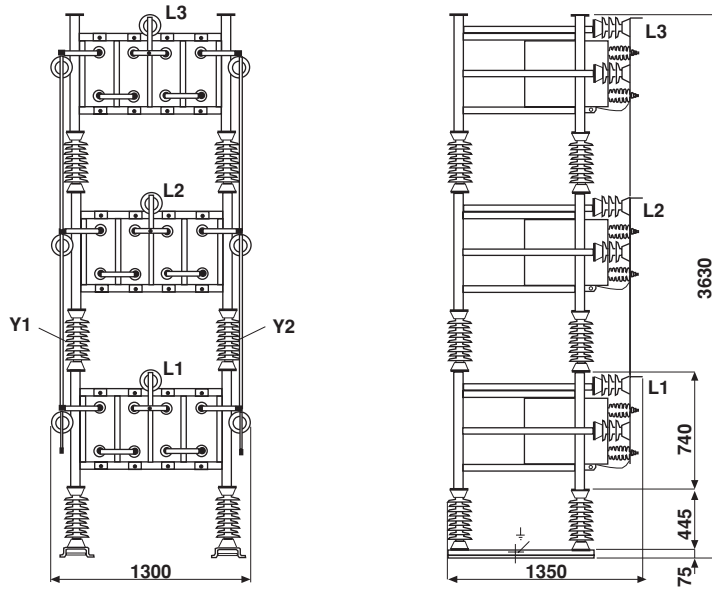
# Capacitor Assembly

Vishay ESTA

High Voltage Power Capacitors



## TYPICAL ARRANGEMENTS



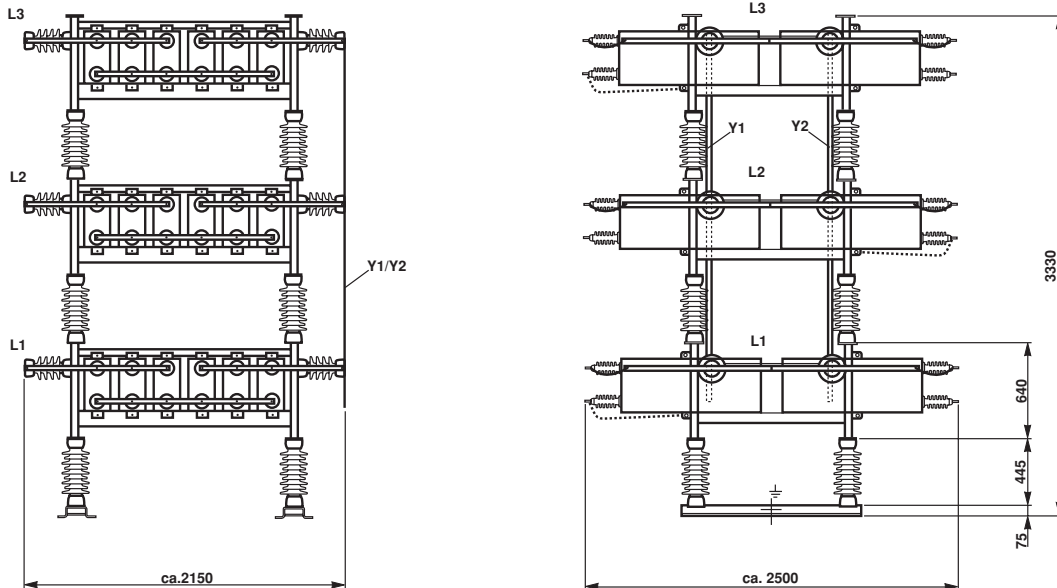
### Type: G00L11

Voltage: > 24kV

Installation: indoor or outdoor

Connection: double star

Protection level: IP 00



### Type: G00L12

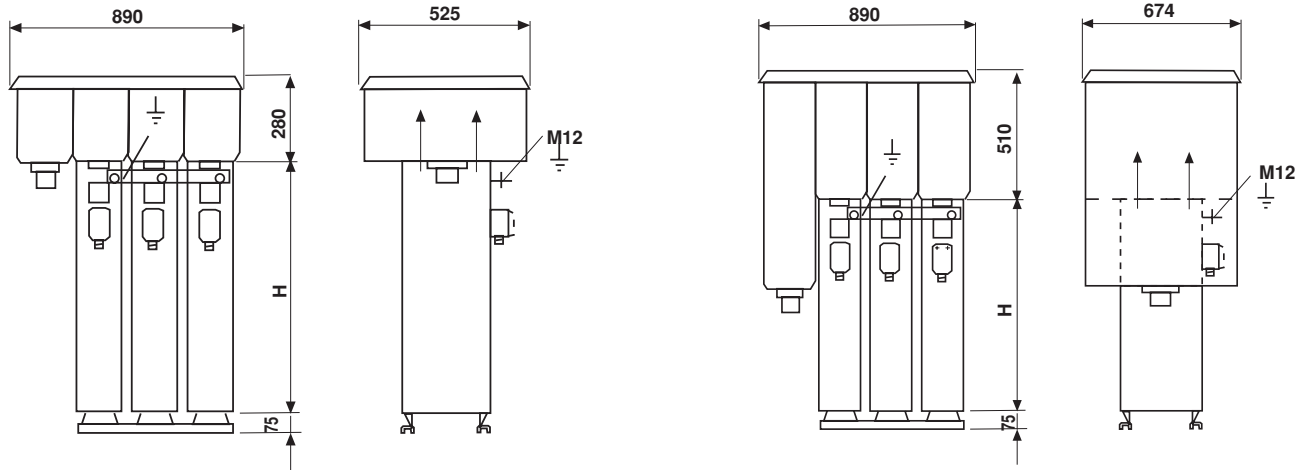
Voltage: > 24kV

Installation: indoor or outdoor

Connection: double star

Protection level: IP 00

**TYPICAL ARRANGEMENTS**

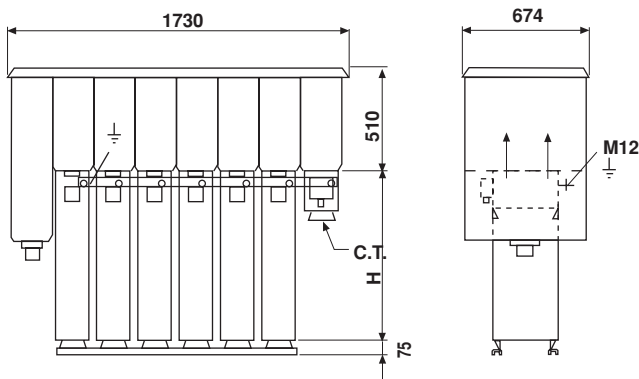


**Type: H55S31-3/D/K1PG68**

Maximum voltage: 7.2kV  
 Installation: indoor or outdoor  
 Connection: star or delta with pressure monitoring device  
 Protection level: IP 55

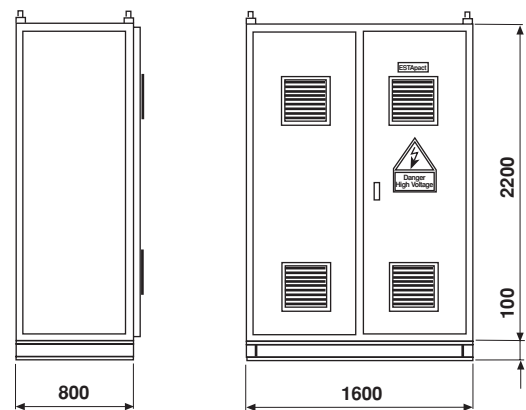
**Type: H55S31-3/D/G1PG68**

Maximum voltage: 12kV  
 Installation: indoor or outdoor  
 Connection: star or delta with pressure monitoring device  
 Protection level: IP 55



**Type: H55S31-6/U/G1PG68**

Maximum voltage: 12kV  
 Installation: indoor or outdoor  
 Connection: double star with unbalanced protection device  
 Protection level: IP 55



**Type: S43S31**

Maximum voltage: 12kV  
 Installation: indoor only  
 Protection level: IP 43