

## Aluminum Capacitors

### TAPING

BCcomponents radial, aluminum and solid aluminum capacitors in sizes up to  $\varnothing D = 16$  mm, are available in taped versions corresponding to "IEC 60286-2" or "JIS C 0805" respectively. They are most suitable for use on automatic insertion machines, mounting robots or cutting and forming equipment and are supplied in boxes (ammopacks).

#### CAUTION

Packages must be handled with care to avoid bent leads

The information contained within this part is valid for the following series:

- 013 RLC
- 036 RSP
- 116 RLL

For catalog numbers, refer to the relevant detail specification in this data book.

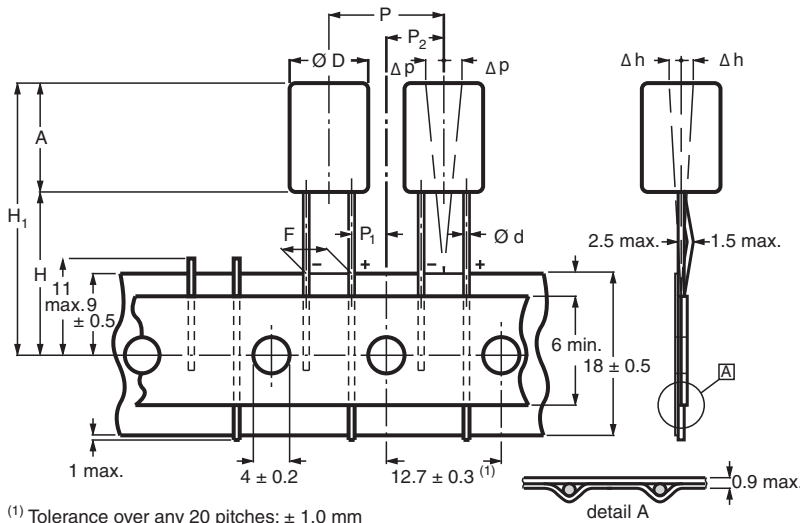


Fig. 1 - Form TNA and TFA, straight leads

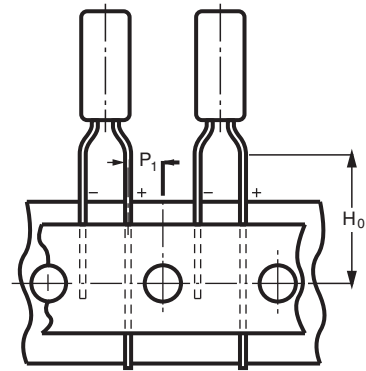


Fig. 2 - Form TFA, formed leads

Table 1

DIMENSIONS in millimeters				
PARAMETER	NOMINAL CASE SIZE ( $\varnothing D \times L$ )			TOLERANCE
	FORM TNA: F = 2.5		FORM TFA: F = 5	
	5 x 11 (straight leads)	5 x 11 (formed leads)	8.2 x 11 (straight leads)	
$\varnothing D$	5.5	5.5	8.7	max.
A	12	12	12	max.
$\varnothing d$	0.5	0.5	0.6	$\pm 0.05$
P	12.7	12.7	12.7	$\pm 1.0$
$P_1$	5.1	3.85	3.85	$\pm 0.7$
$P_2$	6.35	6.35	6.35	$\pm 0.7$
F	2.5	5.0	5.0	+ 0.6/- 0.1
$\Delta h$	0	0	0	$\pm 2.0$
$\Delta p$	0	0	0	$\pm 1.3$
H	18	18	18	+ 1.5/- 0
$H_0$	-	16	-	$\pm 0.5$
$H_1$	32	32	32	max.



Table 2

QUANTITIES PER PACKAGING UNIT					
NOMINAL CASE SIZE (Ø D x L) (mm)	CASE CODE	BULK PER BOX		TAPED AMMOPACK <sup>(1)</sup>	
		FORM CA	FORM CB	FORM TFA	FORM TNA
5 x 11	11	1000	1000	2000	2000
8.2 x 11	13	1000	1000	1000	1000

**Note**

<sup>(1)</sup> Ammopack taping (Form TFA) case Ø D x L = 8.2 mm x 11 mm. To ensure optimum straightness of the leads and correct position of the capacitors in the folding area of the zig-zag shaped tape, every 25th capacitor is omitted.

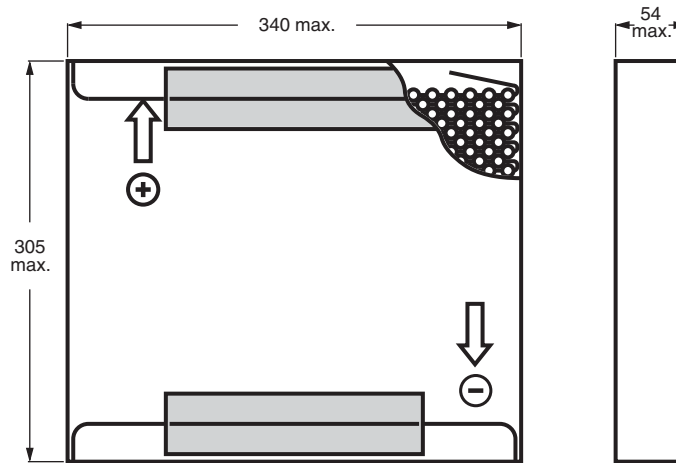


Fig. 3 - Ammopack; Forms TFA and TNA

The information contained within this part is valid for the following series with a case  $\varnothing D = 4$  mm to 8 mm:

- 134 RLP 5
- 097 RLP 7
- 038 RSU
- 142 RHS
- 150 RMI

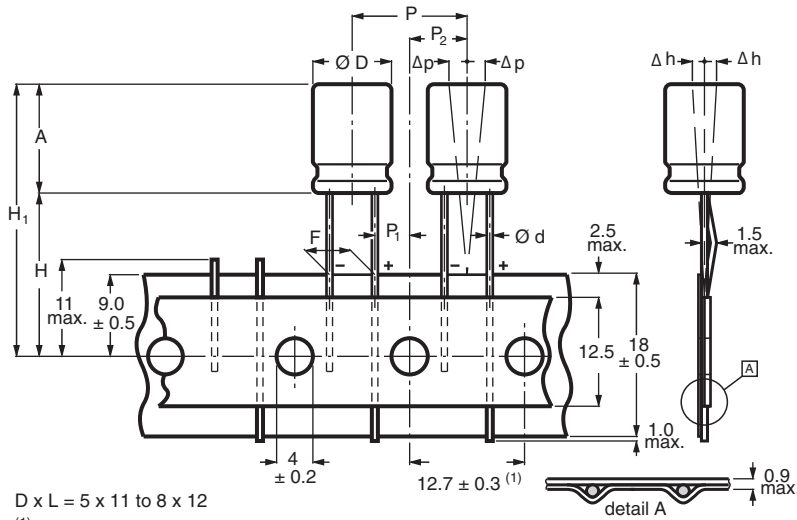


Fig. 4 - Form TNA, straight leads

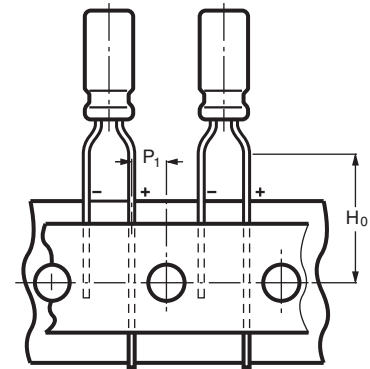


Fig. 5 - Form TFA, formed leads

Table 3

DIMENSIONS in millimeters									
PARAMETER	NOMINAL CASE SIZE ( $\varnothing D \times L$ ) in mm								TOLERANCE
	FORM TNA				FORM TFA				
	5 x 11	6.3 x 11	8 x 12	8 x 15	5 x 11	6.3 x 11	8 x 12	8 x 15	
$\varnothing D$	5.5	6.8	8.5	8.5	5.5	6.8	8.5	8.5	max.
A	12.5	12.5	13.0	16.0	12.5	12.5	13.0	16.0	max.
$\varnothing d$	0.5	0.5	0.6	0.6	0.5	0.5	0.6	0.6	$\pm 0.05$
P	12.7	12.7	12.7	12.7	12.7	12.7	12.7	12.7	$\pm 1.0$
$P_1$	5.1	5.1	4.6	4.6	3.85	3.85	3.85	3.85	$\pm 0.7$
$P_2$	6.35	6.35	6.35	6.35	6.35	6.35	6.35	6.35	$\pm 1.0$
F	2.5	2.5	3.5	3.5	5.0	5.0	5.0	5.0	+ 0.8/- 0.2
$\Delta h$	0	0	0	0	0	0	0	0	$\pm 2.0$
$\Delta p$	0	0	0	0	0	0	0	0	$\pm 1.3$
H	18.5	18.5	18.5	18.5	18.5	18.5	20.0	20.0	$\pm 0.75$
$H_0$	-	-	-	-	16.0	16.0	16.0	16.0	$\pm 0.5$
$H_1$	32.2	32.2	32.2	35.2	32.2	32.2	33.7	36.7	max.

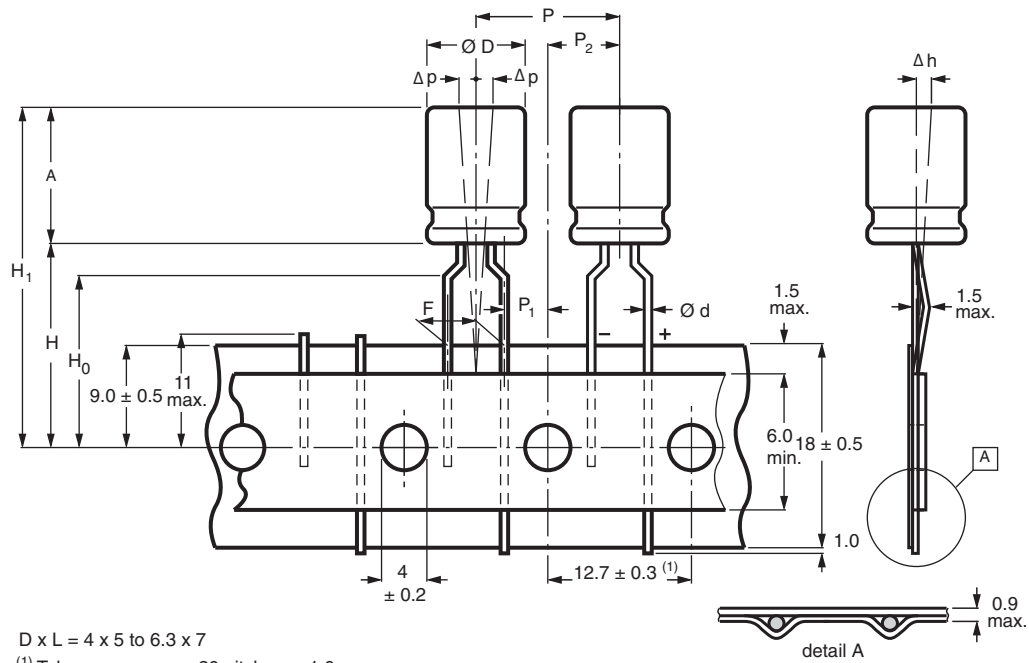


Fig. 6 - Form TFA and TNA

Table 4

DIMENSIONS in millimeters							
PARAMETER	NOMINAL CASE SIZE (Ø D x L)						TOLERANCE
	FORM TFA						
	4 x 5	5 x 5	6.3 x 5	4 x 7	5 x 7	6.3 x 7	
Ø D	4.5	5.5	6.8	4.5	5.5	6.8	max.
A	6.0	6.0	6.0	8.0	8.0	8.0	max.
Ø d	0.45	0.45	0.45	0.45	0.45	0.45	± 0.05
P	12.7	12.7	12.7	12.7	12.7	12.7	± 1.0
P <sub>1</sub>	3.85	3.85	3.85	3.85	3.85	3.85	± 0.7
P <sub>2</sub>	6.35	6.35	6.35	6.35	6.35	6.35	± 1.0
F	5.0	5.0	5.0	5.0	5.0	5.0	+ 0.8/- 0.2
Δh	0	0	0	0	0	0	± 2.0
Δp	0	0	0	0	0	0	± 1.3
H	17.5	17.5	17.5	17.5	17.5	17.5	± 0.75
H <sub>0</sub>	16	16	16	16	16	16	± 0.5
H <sub>1</sub>	32.2	32.2	32.2	32.2	32.2	32.2	max.

Table 5

DIMENSIONS in millimeters							
PARAMETER	NOMINAL CASE SIZE ( $\varnothing D \times L$ )						TOLERANCE
	FORM TNA						
	4 x 5	5 x 5	6.3 x 5	4 x 7	5 x 7	6.3 x 7	
$\varnothing D$	4.5	5.5	6.8	4.5	5.5	6.8	max.
A	6.0	6.0	6.0	8.0	8.0	8.0	max.
$\varnothing d$	0.45	0.45	0.45	0.45	0.45	0.45	$\pm 0.05$
P	12.7	12.7	12.7	12.7	12.7	12.7	$\pm 1.0$
$P_1$	5.1	5.1	5.1	5.1	5.1	5.1	$\pm 0.7$
$P_2$	6.35	6.35	6.35	6.35	6.35	6.35	$\pm 1.0$
F	2.5	2.5	2.5	2.5	2.5	2.5	+ 0.8/- 0.2
$\Delta h$	0	0	0	0	0	0	$\pm 2.0$
$\Delta p$	0	0	0	0	0	0	$\pm 1.3$
H	17.5	18.5	18.5	17.5	18.5	18.5	$\pm 0.75$
$H_0$	16	-	-	-	-	-	$\pm 0.5$
$H_1$	32.2	32.2	32.2	32.2	32.2	32.2	max.

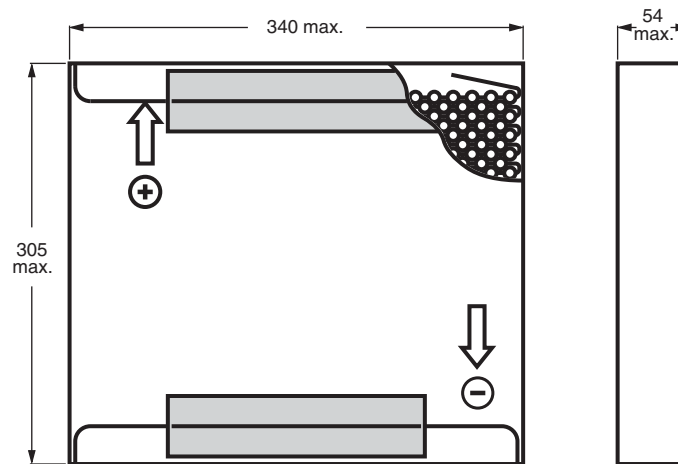


Fig. 7 - Ammopack; Form TFA and TNA

The information contained in this part is valid for the following series with a case  $\varnothing D = 10$  mm to 16 mm:

- 038 RSU
  - 048 RML
  - 136 RVI
  - 140 RTM
  - 142 RHS
- 146 RTI
  - 148 RUS
  - 150 RMI
  - 152 RMH

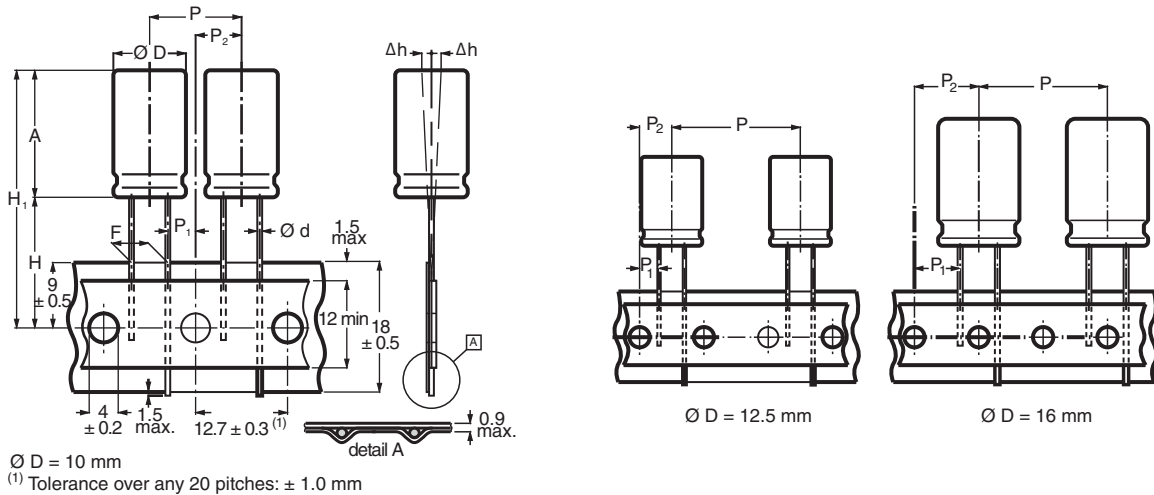


Fig. 8 - Form TFA

Table 6

DIMENSIONS in millimeters									
PARAMETER	NOMINAL CASE SIZE ( $\varnothing D \times L$ )								TOLERANCE
	10 x 12	10 x 16	10 x 20	12.5 x 20	12.5 x 25	16 x 20	16 x 25	16 x 31	
$\varnothing D$	10.5	10.5	10.5	13.0	13.0	16.5	16.5	16.5	max.
A	13.5	17.5	22	22	27	22	27	33.5	max.
$\varnothing d$	0.6	0.6	0.6	0.6	0.6	0.8	0.8	0.8	$\pm 0.05$
P	12.7	12.7	12.7	25.4	25.4	25.4	25.4	25.4	$\pm 1.0$
$P_1$	3.85	3.85	3.85	3.85	3.85	8.95	8.95	8.95	$\pm 0.7$
$P_2$	6.35	6.35	6.35	6.35	6.35	12.7	12.7	12.7	$\pm 1.3$
F	5.0	5.0	5.0	5.0	5.0	7.5	7.5	7.5	+ 0.8/- 0.2
$\Delta h$	0	0	0	0	0	0	0	0	$\pm 3.0$
H	18.5	18.5	18.5	18.5	18.5	18.5	18.5	18.5	$\pm 0.75$
$H_1$	$H_1 = H + A$								
B	54	62	62	62	68	68	68	75	max.

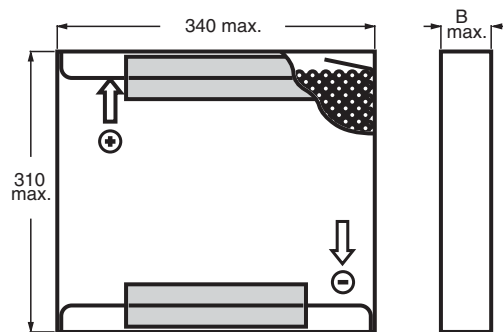


Fig. 9 - Ammopack; Form TFA

**Note**

(1) Ammopack taping (Form TFA). To ensure optimum straightness of the leads and correct position of the components in the folding area of the zig-zag shaped tape, where necessary, one capacitor is omitted at each folding edge.

The information contained within this part is valid for the following series:

- 128 SAL-RPM

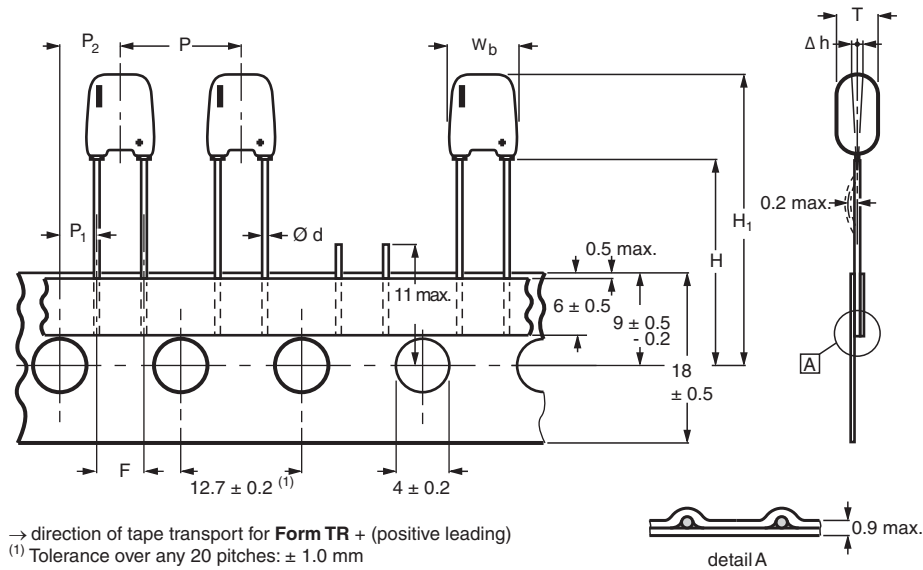


Fig. 10 - Capacitors on tape

Table 7

TAPING DIMENSIONS in millimeters							
PARAMETER	128 SAL-RPM MAX. HEIGHT 9.5 mm						TOLERANCE
	CASE CODE						
	10	20	30	40	50	60	
T	3.0	3.5	4.0	5.0	5.0	6.0	max.
W <sub>b</sub>	7.0	7.0	7.0	7.0	8.0	8.0	max.
∅ d	0.6	0.6	0.6	0.6	0.6	0.6	+ 0.02/- 0
P	12.7	12.7	12.7	12.7	12.7	12.7	± 1.0
P <sub>1</sub>	3.85	3.85	3.85	3.85	3.85	3.85	± 0.7
P <sub>2</sub>	6.35	6.35	6.35	6.35	6.35	6.35	± 1.0
F	5.2	5.2	5.2	5.2	5.2	5.2	± 0.2
Δh	0	0	0	0	0	0	± 1.0
H	18.5	18.5	18.5	18.5	18.5	18.5	± 0.75
H <sub>1</sub>	28	28	28	28	28	28	max.

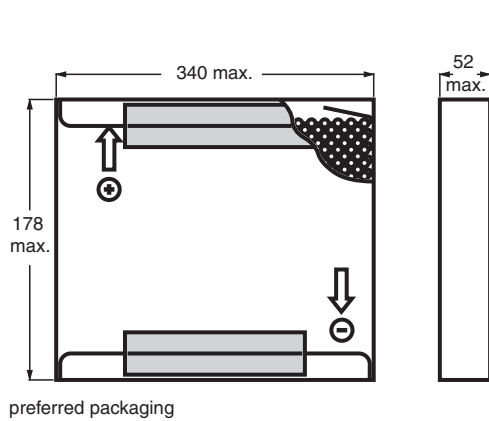


Fig. 11 - Ammopack; Form TFA

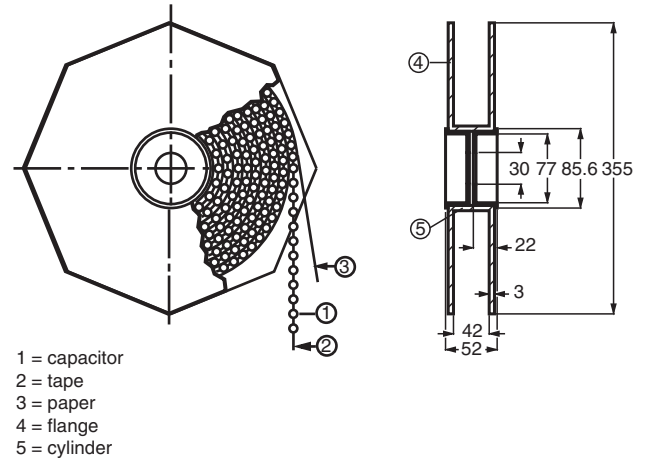


Fig. 12 - Reel; Form TR+

Table 8

QUANTITIES PER PACKAGING UNIT					
CASE SIZE H <sub>max.</sub> x W <sub>max.</sub> x T <sub>max.</sub> (mm)	CASE CODE	BULK PER BOX		TAPED PER REEL	TAPED PER BOX
		FORM CA	FORM CB	FORM TR+	FORM TFA
9.5 x 7.0 x 3.0	10	1000	1000	1000	1000
9.5 x 7.0 x 3.5	20	1000	1000	1000	1000
9.5 x 7.0 x 4.0	30	1000	1000	1000	1000
9.5 x 7.0 x 5.0	40	1000	1000	1000	1000
9.5 x 8.0 x 5.0	50	1000	1000	1000	1000
9.5 x 8.0 x 6.0	60	1000	1000	1000	1000