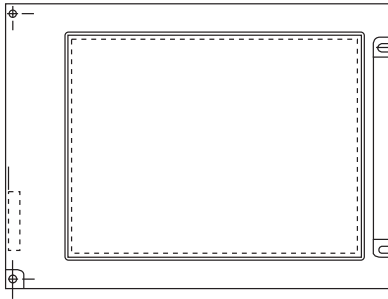


320 x 240 Character LCD



FEATURES

- Color R, G, B LCD type
- 320 RGB x 240 dots
- 8 bit data bus
- Built-in white backlight (CCFL)
- + 3 ~+ 5V power supply
- 1/240 duty cycle

MECHANICAL DATA		
ITEM	STANDARD VALUE	UNIT
Module Dimension	154.6 x 114.8 x 8.5	mm
Viewing Area	118.18 x 89.38	mm
Dot Size	0.09 x 0.33	mm
Character Size	0.12 x 0.36	mm

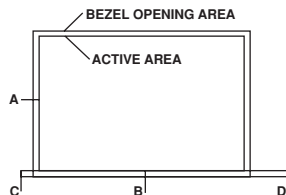
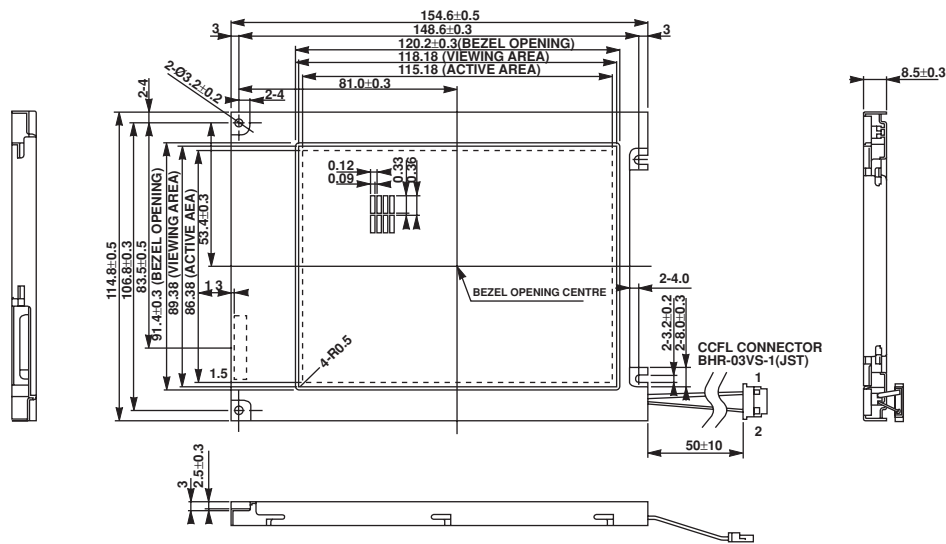
ABSOLUTE MAXIMUM RATING					
ITEM	SYMBOL	STANDARD VALUE			UNIT
		MIN.	TYP.	MAX.	
Power Supply	VDD-VSS	2.7	3.0	3.3	V
		4.7	5.0	5.3	V
Input Voltage	VI	0.8V _{DD}	–	VDD	V

NOTE: VSS = 0 Volt, VDD = 5.0 Volt

ELECTRICAL SPECIFICATIONS						
ITEM	SYMBOL	CONDITION	STANDARD VALUE			UNIT
			MIN.	TYP.	MAX.	
Input Voltage	VDD	L level	0.8V _{DD}	–	V _{DD}	V
	VIO	H level	V _{SS}	–	0.2V _{DD}	V
Supply Current	IDD	VDD = + 5V	–	–	–	mA
Recommended LC Driving Voltage for Normal Temp.	VDD - V0	0°C	–	–	–	V
		25°C	–	26.2	–	
		50°C	–	–	–	
Power Consumption	–	VDD = + 5V	–	2.0	–	mA
	–	VEE = + 26.2V	–	2.0	–	mA

PIN NUMBER	SYMBOL	FUNCTION
1	FRM	Scan Start-up Signal
2	LOAD	Data Latch
3	CP	Data Shift
4	DISP	Display Enable Signal
5	VDD	Power Supply Logic
6	VSS	Ground
7	VEE	Power Supply For LCD
8	DB7	Display Data Bus
9	DB6	Display Data Bus
10	DB5	Display Data Bus
11	DB4	Display Data Bus
12	DB3	Display Data Bus
13	DB2	Display Data Bus
14	DB1	Display Data Bus
15	DB0	Display Data Bus

DIMENSIONS in millimeters



- 1> TOLERANCE X-DIRECTION A=2.51 ±0.6
- 2> TOLERANCE Y-DIRECTION B=2.51 ±0.6
- 3> OBLIQUITY OF DISPLAY AREA (C-D) ±0.6



Disclaimer

All product specifications and data are subject to change without notice.

Vishay Intertechnology, Inc., its affiliates, agents, and employees, and all persons acting on its or their behalf (collectively, "Vishay"), disclaim any and all liability for any errors, inaccuracies or incompleteness contained herein or in any other disclosure relating to any product.

Vishay disclaims any and all liability arising out of the use or application of any product described herein or of any information provided herein to the maximum extent permitted by law. The product specifications do not expand or otherwise modify Vishay's terms and conditions of purchase, including but not limited to the warranty expressed therein, which apply to these products.

No license, express or implied, by estoppel or otherwise, to any intellectual property rights is granted by this document or by any conduct of Vishay.

The products shown herein are not designed for use in medical, life-saving, or life-sustaining applications unless otherwise expressly indicated. Customers using or selling Vishay products not expressly indicated for use in such applications do so entirely at their own risk and agree to fully indemnify Vishay for any damages arising or resulting from such use or sale. Please contact authorized Vishay personnel to obtain written terms and conditions regarding products designed for such applications.

Product names and markings noted herein may be trademarks of their respective owners.