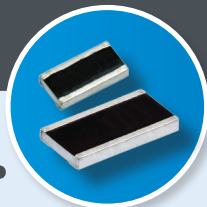
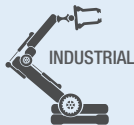


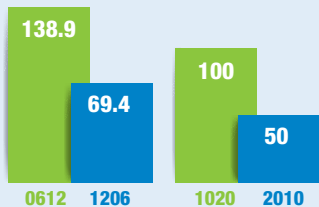


RCWE – THICK FILM CURRENT SENSE RESISTORS

- **Sulfur resistant** per ASTM B809-95 humid vapor test
- Flip chip design **reduces TCR** compared to typical commodity chip resistors
- **Heavy copper** terminations
 - **Increases** power handling
 - **Reduces** termination resistance
- **Long side / reverse** termination available

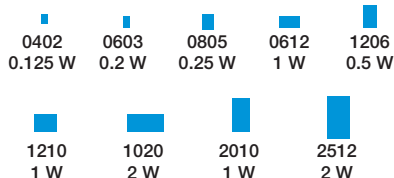


Power Rating:
Standard vs. Reverse Termination



INCREASED POWER DENSITY

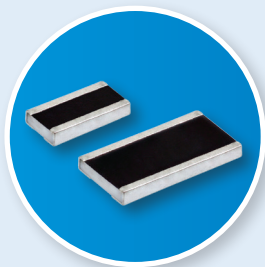
PACKAGES





RCWE – THICK FILM CURRENT SENSE RESISTORS

- Double power rating of standard thick film
- TCR down to 100 ppm/°C
- 1 % tolerance (down to 0.5 %)
- Long side / reverse termination (4x power rating over standard thick film)
- AEC-Q200 qualified



By Size and Resistance Range

	TCR (ppm/°C)										Best Tolerance (%)									
	0402	0603	0805	0612	1206	1210	1020	2010	2512	0402	0603	0805	0612	1206	1210	1020	2010	2512		
0.01	400	700	400	300	600	500	200	600	600	5 %	5 %	5 %	2 %	5 %	5 %	2 %	5 %	5 %		
0.02			400	300	300	300	100	300	300		1 %	1 %		1 %	1 %	1 %	1 %	1 %		
0.03		400						200	200											
0.04		200	200		200	200														
0.05																				
0.06			100		100	100		100	100	1 %		0.5 %		0.5 %	0.5 %		0.5 %	0.5 %		
0.07																				
0.08																				
0.09																				
0.10																				
0.11		100									0.5 %									
0.12																				
0.13																				
0.14																				
0.15																				
0.16																				
0.17																				
0.18																				
0.19	100																			
0.20										0.5 %										
0.21				100									1 %							
0.22																				
0.23																				
0.24																				
0.25																				
0.95																				
0.96																				
0.97																				

MS7449-1710