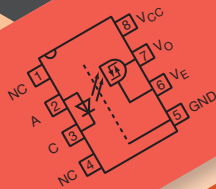
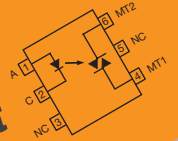


Optocouplers

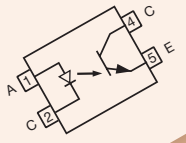
High Speed



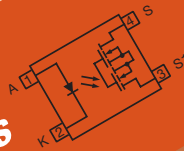
Phototriac Output



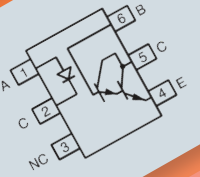
Phototransistor Output



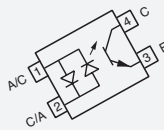
Solid-State Relays



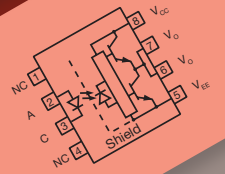
Photodarlington Output



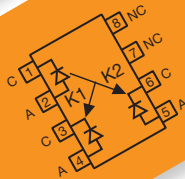
Optocoupler With AC Input



IGBT and MOSFET Driver



Linear





OPTOCOUPLEDERS

Focus Products

Phototransistor Output											
Part Number	Package	Forward Current I_F Typ. (mA)	V_{CE0} (V)	CTR Min. (%)	CTR Max. (%)	Operating Temperature (°C)	V_{ISO} (V_{RMS})	Safety Standards			
VO618A	DIP-4, SMD-4	1	80	50	600	-55 to +110	5300	UL, cUL, VDE, BSI, FIMKO, CQC			
VO617A		5		40							
VO615A		10	63								
VOL628A, AC Input	LSOP-4	± 1	80	40			600		-55 to +110	5000	UL, cUL, VDE, FIMKO, CQC
VOL617A		5		40							
VOL618A		1		50							
VOM618A	SOP-4	5	80	40	600	-40 to +110	3750	UL, cUL, VDE, FIMKO, CQC			
VOM617A				50							
VOMA617A Automotive				50							
VO215AT, VO216AT, VO217AT	SOIC-8	1	30	20	-	-40 to +100	4000		UL, cUL, VDE		
VO205T, VO206T, VO207T		10	70	40	320						
VO211AT, VO213AT			30	20	-						

Phototriac Output													
Part Number	Package	Zero or Non-Zero Crossing	Trigger Current I_{FT} (mA) Max.	Blocking Voltage V_{DRM} (V)	On-State Current (mA)	Static dV/dt (V/μs)	V_{ISO} (V_{RMS})	Safety Standards					
BRT12F	SMD-6, DIP-6	Non-zero	1.2	600	300	10000	5300	UL, VDE, CQC					
BRT13H			2	800									
BRT22F		Zero	2	1.2					600				
BRT23F				800									
IL410				600									
IL4108				800									
IL4118		Non-zero	1.3	2	600	300		5000	UL, CSA, VDE, CQC				
IL420					800								
IL4208					800								
IL4218					800								
VO3052					10					600	100	1500	UL, cUL, VDE
VO3053					5								
VO3062		10											
VO4156D		Zero	1.6	5 to 10	600	300		5000	UL, cUL, VDE, FIMKO				
VO4158D					800								
VO4256D					600								
VO4258D					800								
VOM160		SOP-4	Non-zero	5 to 10	600	70		500	3750	UL, cUL, CQC, VDE			
VOM3052	10						1500	UL, cUL, VDE, CQC					
VOM3053	5												
VO2223B Power TRIAC	DIP-8		10		1000	600	5300	UL, cUL, VDE					



OPTOCOUPERS

Focus Products

Solid-State Relays											
Part Number	Package	Output	V _L Max. (V)	I _L Max. (mA)	I _{Fon} Max. (mA)	R _{ON} Max. (Ω)	t _{on} Max. (ms)	t _{off} Max. (ms)	V _{ISO} (V _{RMS})	Safety Standards	
VO1400	SOP-4	1 Form A	60	100	3.2	5	0.5	0.5	3750	UL, VDE, cUL, FIMKO, CQC	
VO14642A	SMD-6, DIP-6			2000		0.25				0.8	0.8
VOR1121A6 VOR1121B6	DIP-6, SMD-6		250	200	2	15	0.5	0.2	5300	UL, VDE	
VOR1142A6 VOR1142B6			400	140		27					
VOR1142M4	SOP-4		250	200	2	15	0.5	0.2	3750		UL, VDE
VOR2121A8 VOR2121B8	DIP-8, SMD-8										
VOR2142A8 VOR2142B8											

Linear						
Part Number	Package	K3 Transfer Gain (%)	Transfer Gain Linearity Typ. (± %)	Bandwidth, Typ. (kHz)	V _{ISO} (V _{RMS})	Safety Standards
IL300	DIP-8, SMD-8	0.557 to 1.618	0.25	200	5300	UL, cUL, BSI, VDE, FIMKO, CQC

High Speed											
Part Number	Package	Data Rate (MBd)	CTR Min. (%)	Pulse Width Distortion PWD (ns)	t _{PLH} Typ. (μs)	t _{PHL} Typ. (μs)	CMTI Typ. (V/μs)	Operating Temperature (°C)	V _{ISO} (V _{RMS})	Safety Standards	
SFH6136	DIP-8, SMD-8	1	19	-	0.2	0.2	1000	-55 to +100	5300	UL, VDE, CSA	
SFH6316	SOIC-8		15		0.25	0.5			4000	UL, cUL, VDE	
SFH6326 (dual)	DIP-8, SMD-8		19		0.2	0.5			5300		
SFH6343	SOIC-8		19		0.25	0.5	4000				
SFH6345	DIP-8, SMD-8		15		0.3	0.3	30 000		5300	UL, cUL, VDE, CQC	
VO2601		5000	UL, cUL, VDE, BS EN, CQC								
VO2611		15 000									
VO2630 (dual)		1000									
VO2631 (dual)		5000									
VO4661 (dual)		15 000									
VO0600		SOIC-8		10	-	2.9	0.048	0.05	-40 to +100	4000	UL, cUL, VDE
VO0601			1000								
VO0611			5000								
VO0630 (dual)			15 000								
VO0631 (dual)	1000										
VO0661 (dual)	5000										
VO0661 (dual)	15 000										
VOM453	SOP-5	1	15	-	0.5	0.2	15	-55 to +100	3750	UL, cUL, VDE, CQC	
VOW136	DIP-8 widebody, SMD-8 widebody		19		0.6	0.2	1000	-40 to +100	5300		
VOW137		10	-	3.1	49	46	-				
VOW2611										40 000	

IGBT and MOSFET Drivers														
Part Number	Package	Driver Type	Output Current I _O (A)	Operating Voltage Range V _{CC} (V)	t _{PLH} t _{PHL} Min. to Max. (μs)	PWD (μs)	CMR Min. (kV/μs)	Operating Temperature Range (°C)	V _{ISO} (V _{RMS})	Safety Standards				
VO1263	SMD-8, DIP-8	MOSFET	-	-	-	-	-	-40 to +100	5300	UL, VDE, FIMKO, BSI, CQC				
VOM1271	SOP-4								4500	UL, cUL, FIMKO				
VO3120	SMD-8, DIP-8	IGBT	2.5	15 to 32	0.1 to 0.4	0.2	25	-40 to +110	5300	UL, cUL, VDE				
VO3150A			0.5											
VOL3120	LSOP-5		2.5							0.1 to 0.5	0.3	48	-40 to +100	UL, cUL, VDE, CQC
VOW3120	SMD-8 widebody													



Optoelectronics

Bright Ideas, Stellar Products

Advantages of Vishay Optocouplers

- Strong, safe, and reliable galvanic and noise isolation
- High current transfer ratio (CTR) at low forward currents (I_F)
- Established long term proven technology
- Low coupling capacitance

For the Following Applications

- Microelectronics
- Data transmission
- White goods
- Telecommunications
- Alternative energy



Vishay optocouplers deliver high isolation ratings, long external creepage distances, high speeds, and the thinnest package profiles



Vishay optocouplers protect users from electrical shocks and protect microprocessors from being damaged by voltage spikes

Useful Links

- Optocouplers Gateway Page
www.vishay.com/optocouplers/
- Overview of Optocoupler Products
www.vishay.com/doc?49541
- Optocoupler Support
www.vishay.com/optoelectronics/related/

A WORLD OF SOLUTIONS™

RoHS
COMPLIANT

GREEN
(5-2008)*

HALOGEN
FREE