



# Single Turn Rotational Motion Transducers

MECHANICAL SPECIFICATIONS	
Continuous rotation	through 360°
Rotation speed	up to 600 r.p.m.
Rotation life or dither life	up to 50 million revolutions
Gangable	up to 6 cups
Temperature range	- 55°C to + 125°C
Temperature coefficient	- 300ppm/°C ± 500ppm/°C
Terminals	turrets
Mounting	Servo SF - Bushing BF

ELECTRICAL SPECIFICATIONS	
Resolution	essentially infinite
Resistance range	1kΩ to 10kΩ
Tolerance	± 10%
Output smoothness	up to 0.01%
Insulation resistance	10 <sup>3</sup> MΩ (500VDC)
Dielectric voltage at 20°C	1000VRMS (50Hz)
Function	Linear (L) - Non linear (NL)

## STANDARD MODELS

### SERVO



### BUSHING



FUNCTIONS		Ø HOUSING DIAMETER	SHAFTS		SIZE	SERIES	MODEL	MOUNTING		MULTI CUP	DOC. NO.
L	NL		Ø DIA.	LENGTH				SERVO	BUSHING		
		12.7	3.17	ES-CS 12.7 CB 22.2	05	ECO	50	ES	CB		54007
		22.2			09		78	ES CS			
		33.3			13		156	ES CS			
		22.2	3.17	12.7	09		78	RS	RB PB		54008
			6.35	22.2				PS			
		19.2	3.175	SF 16.6 max.	08	ROT	34	SF	BF		ROT SF 54004
		22.3			09		78	SF	BF		
		27.05			11		116	SF	BF		
		33.35			13		156	SF	BF		
		36.6	6.345	BF 20 max.	15		176	SF	BF		ROT BF 54005
		44.5			18		134	SF	BF		
		50.9			20		200	SF	BF		
		76.3			30		300	SF	BF		

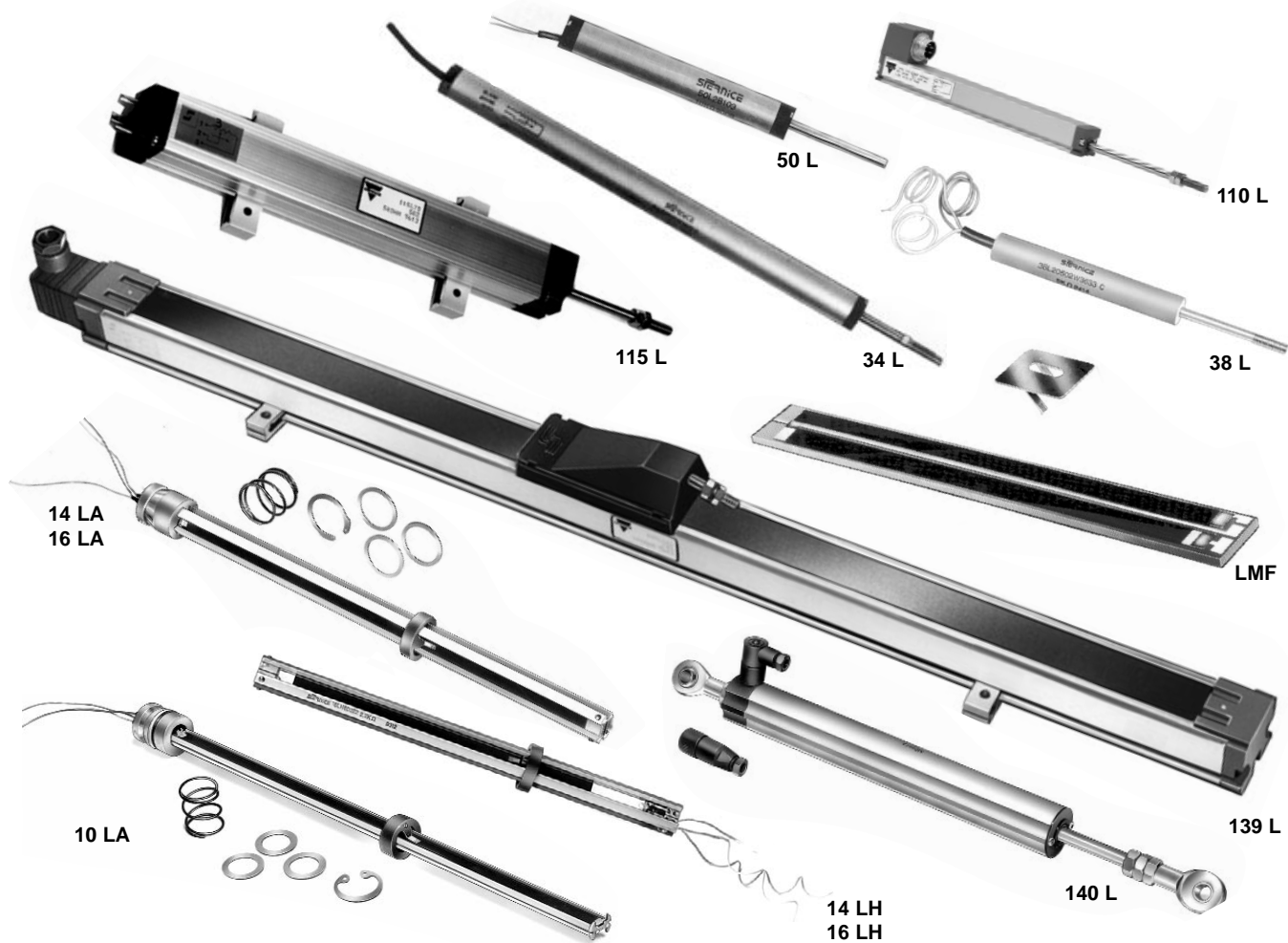
Available.

## Linear Motion Transducers

These potentiometers show the same electrical properties as the rotational potentiometers. However, there are some mechanical differences.

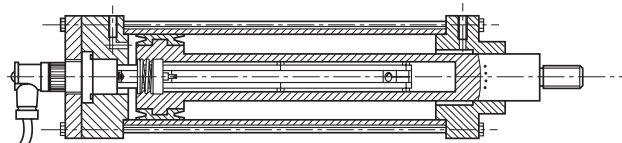
MECHANICAL DIFFERENCES	
Drive speed	10m/s max.
Number of tracks	2 max.
Electrical output	turrets, wires, connectors

DIMENSIONS mm		ELECTRICAL STROKE	NO. OF TRACKS	SERIES	DOC. NO.
Section	31.5 x 36mm	25 to 3000mm	1	139 L	54015
Square section	31.7mm	25 to 1000mm	1	115 L	54013
	18mm	25 to 450mm	1	100 L	54012
Ø dia.	38mm	25 to 1000mm	2	140 L	54014
	19.1mm	25 to 450mm	2	34 L	54011
	12.7mm	25 to 300mm	2	50 L	54011
	9.52mm	12.5 to 150mm	1	38 L	54010
Thickness: 1.6		25 to 1000mm		LMF	54009



DIMENSIONS mm	ELECTRICAL STROKE	SERIES	DOC. NO.
Ø 12	25 to 500mm	10 LA	54017
Ø 16	25 to 2.000mm	14 LA	54018
		14 LH	54016
Ø 18	25 to 2.000mm	16 LA	54018
		16 LH	54016

LINEAR MOTION TRANSDUCERS FOR INTEGRATION INSIDE HYDRAULIC ACTUATOR





## Motion Transducers, Special Designs

Due to the original track manufacturing process our technology is immensely versatile and adaptable, allowing our design engineers to offer you the best possible solution for your application.

Below are some examples of special designs.

