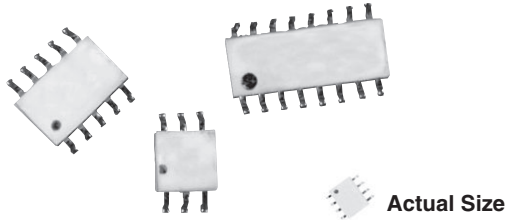


Sandwich, 50 mil Pitch, Dual In-Line Thin Film Resistor, Surface Mount Network



A dual-in-line monolithic ceramic sandwich in a variety of pin sizes (4 to 20) that allow higher resistance integration than traditional chip and wire molded construction. In addition, tighter resistance tolerances can be obtained over traditional molded networks due to the elimination of molding temperature and stress.

FEATURES

- Lead (Pb)-free gold plated terminals standard
- Gold-to-gold terminations. External leads are attached directly to gold pads on the ceramic substrate by thermo-compression bonding (no internal solder)
- Tighter tolerances than molded standards (0.01 %)
- Ceramic package with no cavity
- Flexibility of lead variations to save PC board space
- Compliant to RoHS Directive 2002/95/EC
- Halogen-free according to IEC 61249-2-21 definition



RoHS*
COMPLIANT
HALOGEN
FREE

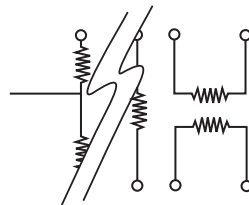
Note

* Pb containing terminations are not RoHS compliant, exemptions may apply

TYPICAL PERFORMANCE

	ABSOLUTE	TRACKING
TCR	25	5
	ABSOLUTE	RATIO
TOL.	0.1	0.02

SCHEMATIC



Custom schematics available
Please consult factory

STANDARD ELECTRICAL SPECIFICATIONS		
TEST	SPECIFICATIONS	CONDITIONS
Material	Tantalum nitride or passivated nichrome ⁽¹⁾	-
Pin/Lead Number	4 to 20	-
Resistance Range	100 Ω to 1.5 MΩ total	-
TCR: Absolute	± 25 ppm/°C to ± 50 ppm/°C	- 55 °C to + 125 °C
TCR: Tracking	± 5 ppm/°C (typical)	- 55 °C to + 125 °C
Tolerance: Absolute	± 0.05 % to ± 1.0 %	+ 25 °C
Tolerance: Ratio	± 0.02 % to ± 0.1 %	+ 25 °C
Power Rating: Resistor	100 mW	Per element at + 70 °C
Power Rating: Package	500 mW	Maximum at + 70 °C
Stability: Absolute	ΔR ± 0.1 %	2000 h at + 70 °C
Stability: Ratio	ΔR ± 0.03 %	2000 h at + 70 °C
Voltage Coefficient	0.1 ppm/V	-
Working Voltage	100 V max. not to exceed $\sqrt{P \times R}$	-
Operating Temperature Range	- 55 °C to + 125 °C	-
Storage Temperature Range	- 55 °C to + 150 °C	-
Noise	< - 30 dB	-
Thermal EMF	0.08 μV/°C	-
Shelf Life Stability: Absolute	ΔR ± 0.01 %	1 year at + 25 °C
Shelf Life Stability: Ratio	ΔR ± 0.002 %	1 year at + 25 °C

Note

⁽¹⁾ Passivated nichrome is not standard film type for CSO series, consult factory if required

DIMENSIONS AND IMPRINTING in inches and millimeters			
	DIMENSION	INCHES	MILLIMETERS
	A	0.050	1.27
	B (Typ.)	0.015	0.38
	C	0.017 - 0.005 + 0.0010	0.432
	D (Max.)	0.157	3.99
	E	0.239	6.07
	F (Min.)	0.005	0.13
	G (Typ.)	0.006	0.15
	H (Max.)	0.070	1.72
	L (6 Pins)	0.150 ± 0.01	3.81
	L (8 Pins)	0.200 ± 0.01	5.08
	L (10 Pins)	0.250 ± 0.01	6.35
	L (12 Pins)	0.300 ± 0.01	7.62
	L (14 Pins)	0.350 ± 0.01	8.89
	L (16 Pins)	0.400 ± 0.01	10.16
	L (18 Pins)	0.450 ± 0.01	11.43
	L (20 Pins)	0.500 ± 0.01	12.70

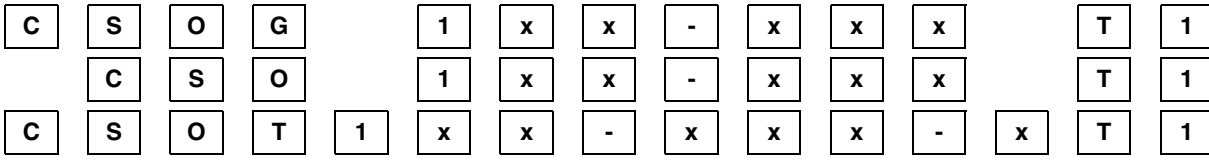
MECHANICAL SPECIFICATIONS	
Resistive Element	Passivated nichrome or tantalum nitride
Body	Ceramic
Lead Coplanarity	± 0.004
Substrate Material	Alumina
Marking Resistance to Solvents	Per MIL-PRF-83401
Terminals	Copper alloy
Plating	Nickel/gold
Model CSOG - Lead (Pb)-free Standard	Gold plated
Model CSO - Tin/Lead Solder Coated Option	Sn63
Model CSOT - Lead (Pb)-free Solder Coated Option	96.5 % Sn, 3.0 % Ag, 0.5 % Cu

ORDERING INFORMATION CHECK LIST	
Special requirements should be identified in advance, but as a minimum, you should have the following information ready.	
ELECTRICAL	MECHANICAL
<ol style="list-style-type: none"> Resistors, by value and tolerance Reference resistor(s) and matching of which resistors to which reference resistors Reference by ratio Absolute temperature coefficient of resistivity Temperature tracking of subordinate resistors to reference resistor(s) Maximum operating voltage Resistor power ratings Operating temperature range 	<ol style="list-style-type: none"> Maximum allowable seated height (from PC board to top of network) Special marking concerns Schematic pin out of package Specify if solder coated leads are required



GLOBAL PART NUMBER INFORMATION

New Global Part Numbering: CSOG1xx-xxxT1



GLOBAL MODEL
(3 or 4 digits)

CSOG
(Lead (Pb)-free)
(e4)

CSO
(Tin Lead)

CSOT
(Lead (Pb)-free)
(e1)

CUSTOM PART NUMBER
(7 or 9 digits)

1xx-xxx
1xx-xxx-x

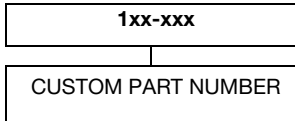
PACKAGING

TAPE AND REEL

T0 = 100 min., 100 mult
T1 = 1000 min., 1000 mult
T3 = 300 min., 300 mult
T5 = 500 min., 500 mult
TF = Full reel
TS = 100 min., 1 mult

UF = TUBED

Historical Part Number example: 1xx-xxx (for reference purposes only)





Disclaimer

ALL PRODUCT, PRODUCT SPECIFICATIONS AND DATA ARE SUBJECT TO CHANGE WITHOUT NOTICE TO IMPROVE RELIABILITY, FUNCTION OR DESIGN OR OTHERWISE.

Vishay Intertechnology, Inc., its affiliates, agents, and employees, and all persons acting on its or their behalf (collectively, "Vishay"), disclaim any and all liability for any errors, inaccuracies or incompleteness contained in any datasheet or in any other disclosure relating to any product.

Vishay makes no warranty, representation or guarantee regarding the suitability of the products for any particular purpose or the continuing production of any product. To the maximum extent permitted by applicable law, Vishay disclaims (i) any and all liability arising out of the application or use of any product, (ii) any and all liability, including without limitation special, consequential or incidental damages, and (iii) any and all implied warranties, including warranties of fitness for particular purpose, non-infringement and merchantability.

Statements regarding the suitability of products for certain types of applications are based on Vishay's knowledge of typical requirements that are often placed on Vishay products in generic applications. Such statements are not binding statements about the suitability of products for a particular application. It is the customer's responsibility to validate that a particular product with the properties described in the product specification is suitable for use in a particular application. Parameters provided in datasheets and/or specifications may vary in different applications and performance may vary over time. All operating parameters, including typical parameters, must be validated for each customer application by the customer's technical experts. Product specifications do not expand or otherwise modify Vishay's terms and conditions of purchase, including but not limited to the warranty expressed therein.

Except as expressly indicated in writing, Vishay products are not designed for use in medical, life-saving, or life-sustaining applications or for any other application in which the failure of the Vishay product could result in personal injury or death. Customers using or selling Vishay products not expressly indicated for use in such applications do so at their own risk and agree to fully indemnify and hold Vishay and its distributors harmless from and against any and all claims, liabilities, expenses and damages arising or resulting in connection with such use or sale, including attorneys fees, even if such claim alleges that Vishay or its distributor was negligent regarding the design or manufacture of the part. Please contact authorized Vishay personnel to obtain written terms and conditions regarding products designed for such applications.

No license, express or implied, by estoppel or otherwise, to any intellectual property rights is granted by this document or by any conduct of Vishay. Product names and markings noted herein may be trademarks of their respective owners.

Material Category Policy

Vishay Intertechnology, Inc. hereby certifies that all its products that are identified as RoHS-Compliant fulfill the definitions and restrictions defined under Directive 2011/65/EU of The European Parliament and of the Council of June 8, 2011 on the restriction of the use of certain hazardous substances in electrical and electronic equipment (EEE) - recast, unless otherwise specified as non-compliant.

Please note that some Vishay documentation may still make reference to RoHS Directive 2002/95/EC. We confirm that all the products identified as being compliant to Directive 2002/95/EC conform to Directive 2011/65/EU.