



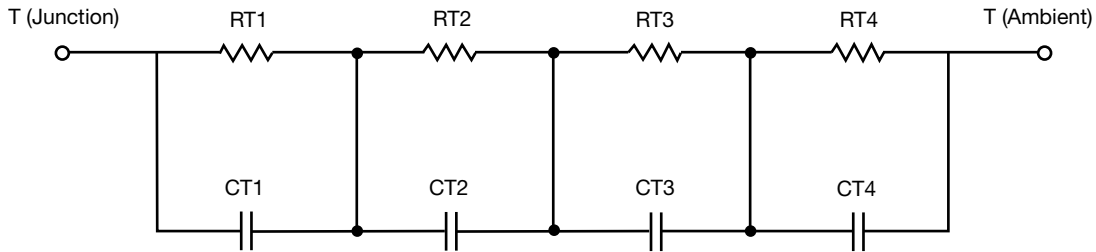
R-C Thermal Model Parameters

DESCRIPTION

The parametric values in the R-C thermal model have been derived using curve-fitting techniques. R-C values for the electrical circuit in the Foster/tank and Cauer/filter configurations are included. When implemented in P-SPICE, these values have matching characteristic curves to the single-pulse transient thermal impedance curves for the MOSFET.

These RC values can be used in the P-SPICE simulation to evaluate the thermal behavior of the MOSFET junction temperature under a defined power profile. These techniques are described in application note AN609, "Thermal Simulation of Power MOSFETs on the P-SPICE Platform".

R-C THERMAL MODEL FOR TANK CONFIGURATION



R-C VALUES FOR TANK CONFIGURATION			
THERMAL RESISTANCE (°C/W)			
Junction to	Ambient	Case	Foot
RT1	11.9104	500.1259m	N/A
RT2	3.1921	13.0601m	N/A
RT3	931.0189m	796.4336m	N/A
RT4	23.9695	193.6688m	N/A
THERMAL CAPACITANCE (Joules/°C)			
Junction to	Ambient	Case	Foot
CT1	8.2562	9.9404m	N/A
CT2	1.0641	662.5808u	N/A
CT3	147.3202m	112.0320m	N/A
CT4	4.0108	1.9270	N/A

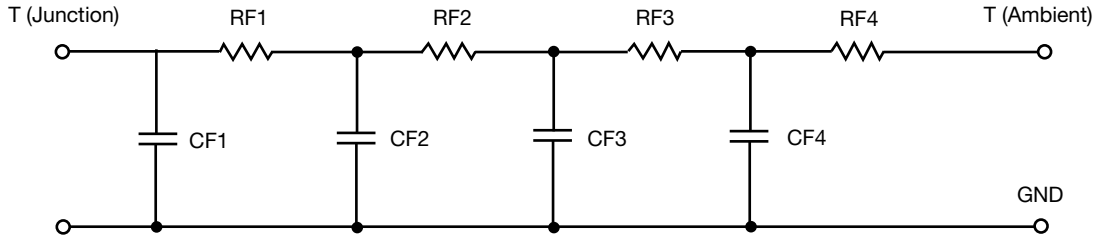
Note

- n/a indicates not applicable

This document is intended as a SPICE modeling guideline and does not constitute a commercial product datasheet. Designers should refer to the appropriate datasheet of the same number for guaranteed specification limits.



R-C THERMAL MODEL FOR FILTER CONFIGURATION



R-C VALUES FOR FILTER CONFIGURATION			
THERMAL RESISTANCE (°C/W)			
Junction to	Ambient	Case	Foot
RF1	884.7234m	646.1942m	N/A
RF2	6.5762	519.4971m	N/A
RF3	23.1425	316.8489m	N/A
RF4	9.4830	14.6977m	N/A
THERMAL CAPACITANCE (Joules/°C)			
Junction to	Ambient	Case	Foot
CF1	24.3391m	9.5092m	N/A
CF2	882.6174m	108.3835m	N/A
CF3	1.7594	226.9342m	N/A
CF4	2.6137	33.7627m	N/A

Note

- n/a indicates not applicable

