

## N-Channel 8 V (D-S) MOSFET

### DESCRIPTION

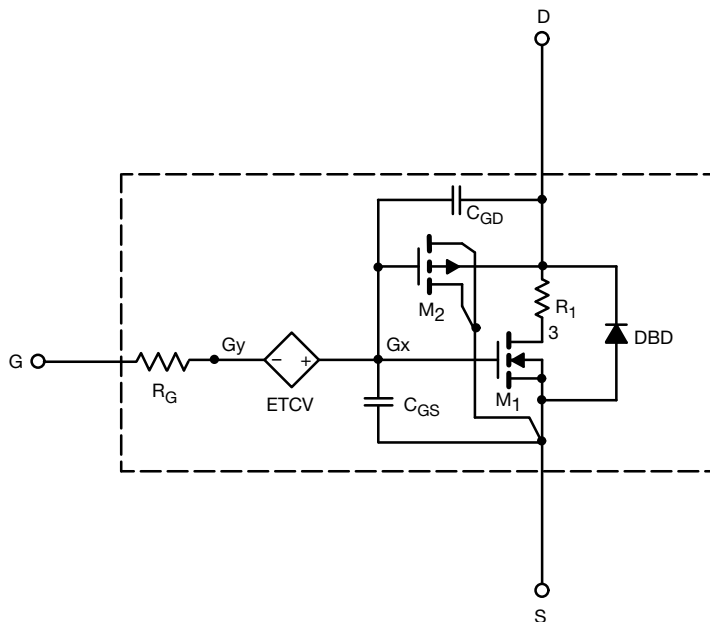
The attached SPICE model describes the typical electrical characteristics of the n-channel vertical DMOS. The subcircuit model is extracted and optimized over the - 55 °C to + 125 °C temperature ranges under the pulsed 0 V to 5 V gate drive. The saturated output impedance is best fit at the gate bias near the threshold voltage.

A novel gate-to-drain feedback capacitance network is used to model the gate charge characteristics while avoiding convergence difficulties of the switched  $C_{gd}$  model. All model parameter values are optimized to provide a best fit to the measured electrical data and are not intended as an exact physical interpretation of the device.

### CHARACTERISTICS

- N-Channel Vertical DMOS
- Macro Model (Subcircuit Model)
- Level 3 MOS
- Apply for both Linear and Switching Application
- Accurate over the - 55 °C to + 125 °C Temperature Range
- Model the Gate Charge

### SUBCIRCUIT MODEL SCHEMATIC



### Note

- This document is intended as a SPICE modeling guideline and does not constitute a commercial product datasheet. Designers should refer to the appropriate datasheet of the same number for guaranteed specification limits.



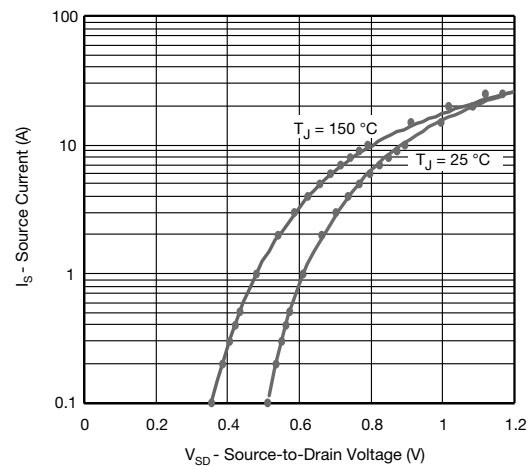
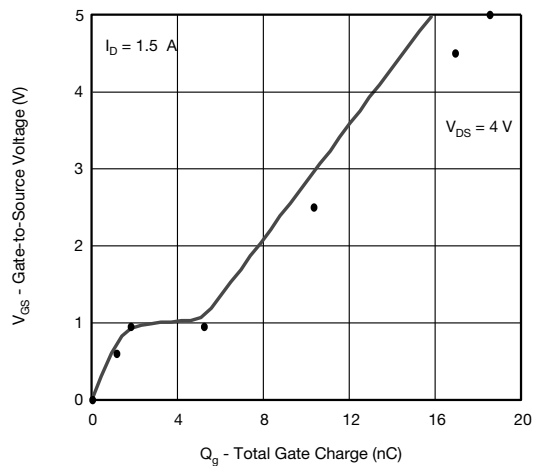
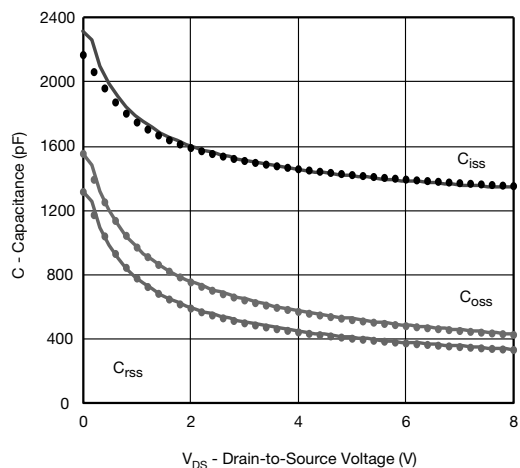
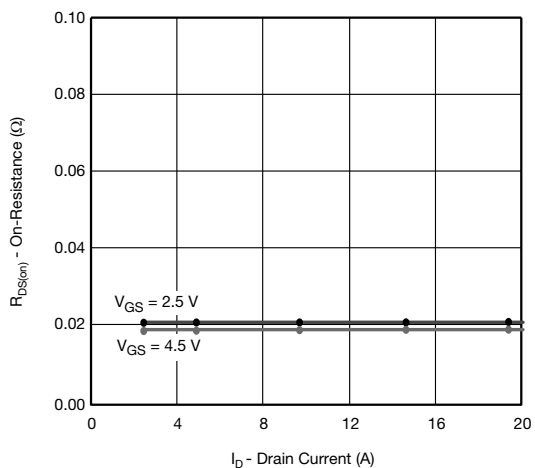
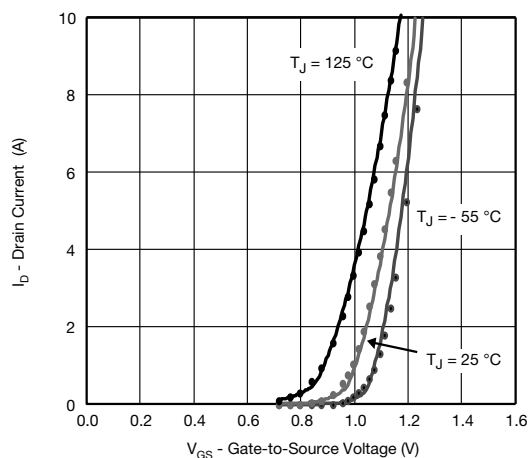
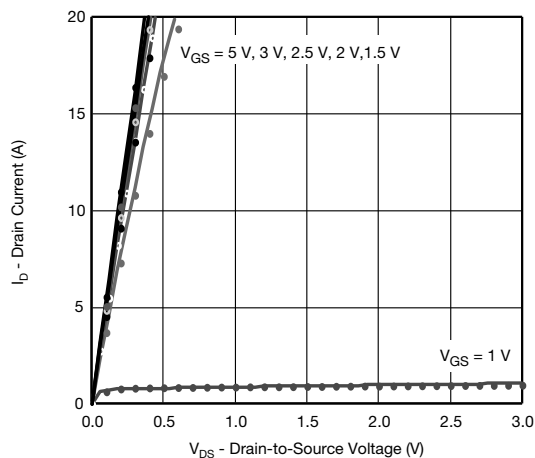
<b>SPECIFICATIONS</b> $T_J = 25\text{ }^{\circ}\text{C}$ , unless otherwise noted					
PARAMETER	SYMBOL	TEST CONDITIONS	SIMULATED DATA	MEASURED DATA	UNIT
<b>Static</b>					
Gate Threshold Voltage	$V_{GS(th)}$	$V_{DS} = V_{GS}$ , $I_D = 250\text{ }\mu\text{A}$	0.50	-	V
Drain-Source On-State Resistance <sup>a</sup>	$R_{DS(on)}$	$V_{GS} = 4.5\text{ V}$ , $I_D = 1.5\text{ A}$	0.019	0.019	$\Omega$
		$V_{GS} = 2.5\text{ V}$ , $I_D = 1\text{ A}$	0.021	0.021	
Forward Transconductance <sup>a</sup>	$g_{fs}$	$V_{DS} = 4\text{ V}$ , $I_D = 1.5\text{ A}$	32	22	S
Diode Forward Voltage	$V_{SD}$	$I_S = 1.5\text{ A}$	0.65	0.70	V
<b>Dynamic<sup>b</sup></b>					
Input Capacitance	$C_{iss}$	$V_{DS} = 4\text{ V}$ , $V_{GS} = 0\text{ V}$ , $f = 1\text{ MHz}$	1460	1470	pF
Output Capacitance	$C_{oss}$		579	580	
Reverse Transfer Capacitance	$C_{rss}$		451	450	
Total Gate Charge	$Q_g$	$V_{DS} = 4\text{ V}$ , $V_{GS} = 4.5$ , $I_D = 1.5\text{ A}$	15	17	nC
Gate-Source Charge	$Q_{gs}$		1.8	1.8	
Gate-Drain Charge	$Q_{gd}$		3.4	3.4	

**Notes**

- a. Pulse test; pulse width  $\leq 300\text{ }\mu\text{s}$ , duty cycle  $\leq 2\%$ .  
b. Guaranteed by design, not subject to production testing.



## COMPARISON OF MODEL WITH MEASURED DATA $T_J = 25^\circ\text{C}$ , unless otherwise noted



### Note

- Dots and squares represent measured data.

Copyright: Vishay Intertechnology, Inc.