

R-C Thermal Model Parameters

DESCRIPTION

The parametric values in the R-C thermal model have been derived using curve-fitting techniques. R-C values for the electrical circuit in the Foster/tank and Cauer/filter configurations are included. When implemented in P-SPICE, these values have matching characteristic curves to the single-pulse transient thermal impedance curves for the MOSFET.

These RC values can be used in the P-SPICE simulation to evaluate the thermal behavior of the MOSFET junction temperature under a defined power profile. These techniques are described in application note AN609, "Thermal Simulation of Power MOSFETs on the P-SPICE Platform".

R-C THERMAL MODEL FOR TANK CONFIGURATION



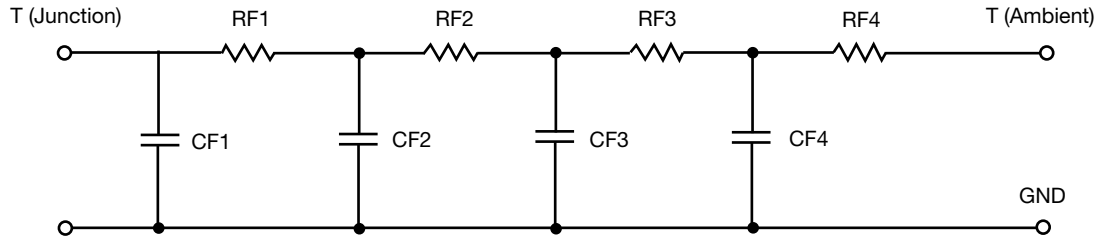
R-C VALUES FOR TANK CONFIGURATION			
THERMAL RESISTANCE (°C/W)			
Junction to	Ambient	Case	Foot
RT1	8.7531	N/A	7.4358
RT2	35.9464	N/A	22.0171
RT3	22.4696	N/A	9.0894
RT4	57.5439	N/A	6.4666
THERMAL CAPACITANCE (Joules/°C)			
Junction to	Ambient	Case	Foot
CT1	236.2042u	N/A	207.8555u
CT2	2.3885m	N/A	1.5731m
CT3	67.7502m	N/A	9.7132m
CT4	1.6059	N/A	336.8655m

Note

N/A indicates not applicable

This document is intended as a SPICE modeling guideline and does not constitute a commercial product datasheet. Designers should refer to the appropriate datasheet of the same number for guaranteed specification limits.

R-C THERMAL MODEL FOR FILTER CONFIGURATION



R-C VALUES FOR FILTER CONFIGURATION			
THERMAL RESISTANCE (°C/W)			
Junction to	Ambient	Case	Foot
RF1	10.9526	N/A	8.0863
RF2	35.4357	N/A	30.1499
RF3	21.7894	N/A	4.4914
RF4	56.2832	N/A	2.2801
THERMAL CAPACITANCE (Joules/°C)			
Junction to	Ambient	Case	Foot
CF1	231.5080u	N/A	147.3530u
CF2	2.0983m	N/A	1.2441m
CF3	57.6764m	N/A	288.9102m
CF4	1.5218	N/A	62.8004m

Note

N/A indicates not applicable

