

## P-Channel 12 V (D-S) MOSFET

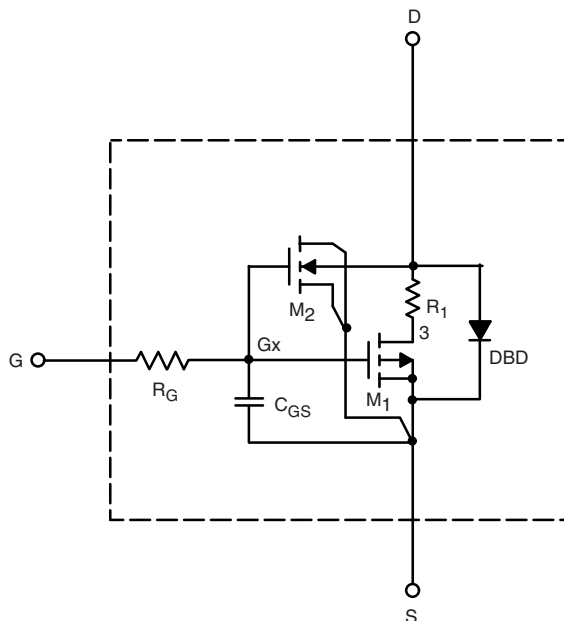
### DESCRIPTION

The attached SPICE model describes the typical electrical characteristics of the p-channel vertical DMOS. The subcircuit model is extracted and optimized over the - 55 °C to + 125 °C temperature ranges under the pulsed 0 V to 5 V gate drive. The saturated output impedance is best fit at the gate bias near the threshold voltage. A novel gate-to-drain feedback capacitance network is used to model the gate charge characteristics while avoiding convergence difficulties of the switched  $C_{gd}$  model. All model parameter values are optimized to provide a best fit to the measured electrical data and are not intended as an exact physical interpretation of the device.

### CHARACTERISTICS

- P-Channel Vertical DMOS
- Macro Model (Subcircuit Model)
- Level 3 MOS
- Apply for both Linear and Switching Application
- Accurate over the - 55 °C to + 125 °C Temperature Range
- Model the Gate Charge

### SUBCIRCUIT MODEL SCHEMATIC



### Note

- This document is intended as a SPICE modeling guideline and does not constitute a commercial product datasheet. Designers should refer to the appropriate datasheet of the same number for guaranteed specification limits.



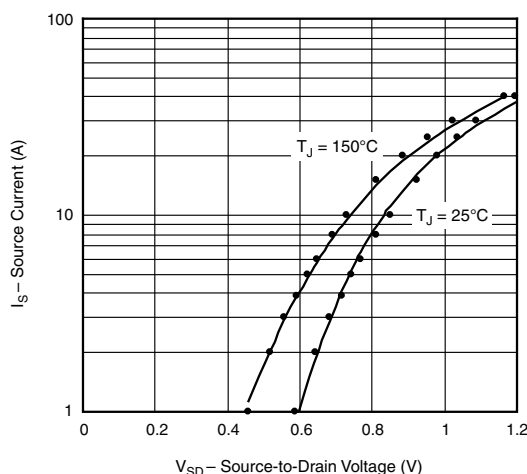
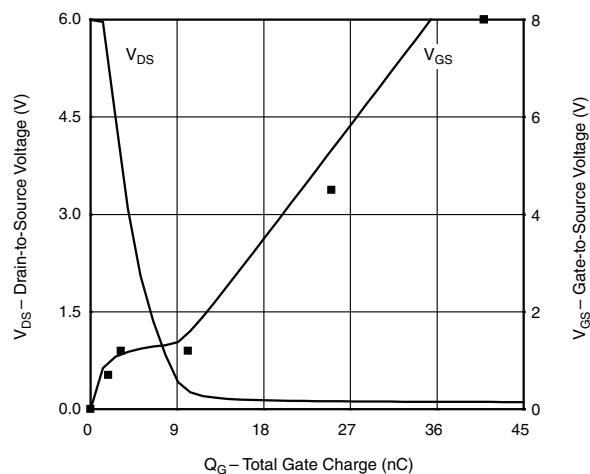
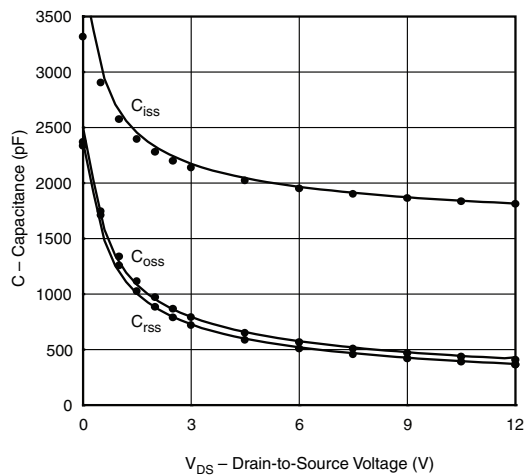
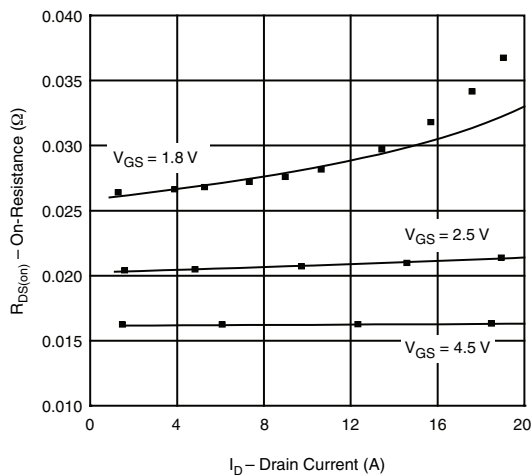
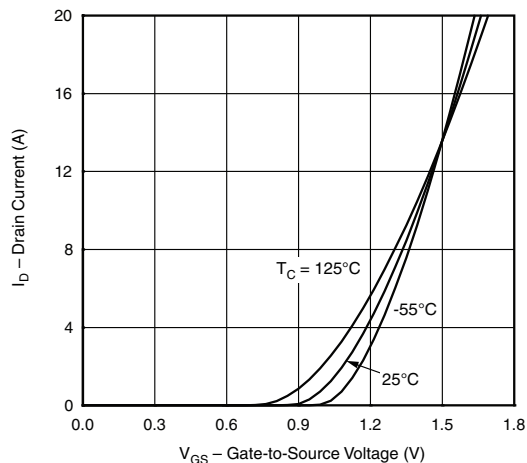
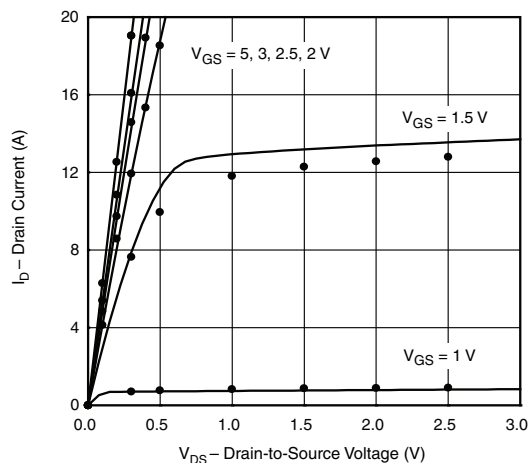
SPECIFICATIONS ( $T_J = 25^\circ\text{C}$ , unless otherwise noted)					
PARAMETER	SYMBOL	TEST CONDITIONS	SIMULATED DATA	MEASURED DATA	UNIT
<b>Static</b>					
Gate-Source Threshold Voltage	$V_{GS(th)}$	$V_{DS} = V_{GS}$ , $I_D = -250\ \mu\text{A}$	0.67	-	V
Drain-Source On-State Resistance <sup>a</sup>	$R_{DS(on)}$	$V_{GS} = -4.5\ \text{V}$ , $I_D = -8.1\ \text{A}$	0.016	0.016	$\Omega$
		$V_{GS} = -2.5\ \text{V}$ , $I_D = -7.1\ \text{A}$	0.021	0.021	
		$V_{GS} = -1.8\ \text{V}$ , $I_D = -2.8\ \text{A}$	0.026	0.026	
Forward Transconductance <sup>a</sup>	$g_{fs}$	$V_{DS} = -6\ \text{V}$ , $I_D = -8.1\ \text{A}$	31	30	S
Diode Forward Voltage	$V_{SD}$	$I_S = -5.9\ \text{A}$	-0.81	-0.80	V
<b>Dynamic<sup>b</sup></b>					
Input Capacitance	$C_{iss}$	$V_{DS} = -6\ \text{V}$ , $V_{GS} = 0\ \text{V}$ , $f = 1\ \text{MHz}$	1968	2010	pF
Output Capacitance	$C_{oss}$		578	580	
Reverse Transfer Capacitance	$C_{rss}$		522	520	
Total Gate Charge	$Q_g$	$V_{DS} = -6\ \text{V}$ , $V_{GS} = -8\ \text{V}$ , $I_D = -8.1\ \text{A}$	36	43	nC
			22	26	
Gate-Source Charge	$Q_{gs}$	$V_{DS} = -6\ \text{V}$ , $V_{GS} = -4.5\ \text{V}$ , $I_D = -8.1\ \text{A}$	3.3	3.3	
Gate-Drain Charge	$Q_{gd}$		7.5	7.5	

**Note**

- a. Pulse test; pulse width  $\leq 300\ \mu\text{s}$ , duty cycle  $\leq 2\ \%$ .  
b. Guaranteed by design, not subject to production testing.



## COMPARISON OF MODEL WITH MEASURED DATA ( $T_J = 25^\circ\text{C}$ , unless otherwise noted)



### Note

- Dots and squares represent measured data.