

R-C Thermal Model Parameters

DESCRIPTION

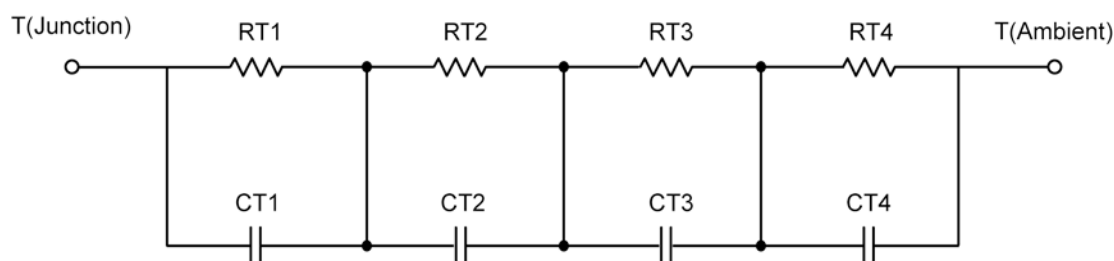
The parametric values in the R-C thermal model have been derived using curve-fitting techniques. These techniques are described in "[A Simple Method of Generating Thermal Models for a Power MOSFET](#)"[1]. When implemented in P-Spice, these values have matching characteristic curves to the Single Pulse Transient Thermal Impedance curves for the MOSFET.

R-C values for the electrical circuit in the Foster/Tank and Cauer/Filter configurations are included.

Note:

For a detailed explanation of implementing these values in P-SPICE, refer to [Application Note AN609 Thermal Simulations Of Power MOSFETs on P-SPICE Platform](#).

R-C THERMAL MODEL FOR TANK CONFIGURATION

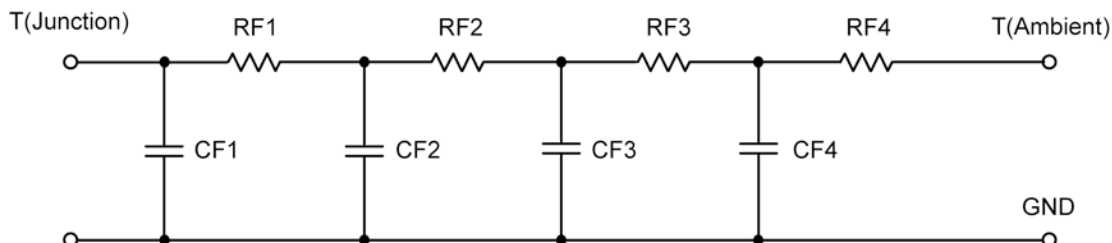


R-C VALUES FOR TANK CONFIGURATION			
Thermal Resistance (°C/W)			
Junction to	Ambient	Case	Foot
RT1	N/A	415.4026 m	N/A
RT2	N/A	343.7979 m	N/A
RT3	N/A	204.9670 m	N/A
RT4	N/A	135.8326 m	N/A
Thermal Capacitance (Joules/°C)			
Junction to	Ambient	Case	Foot
CT1	N/A	35.8885 m	N/A
CT2	N/A	3.8792 m	N/A
CT3	N/A	1.8392 m	N/A
CT4	N/A	1.6165	N/A

This document is intended as a SPICE modeling guideline and does not constitute a commercial product data sheet. Designers should refer to the appropriate data sheet of the same number for guaranteed specification limits.



R-C THERMAL MODEL FOR FILTER CONFIGURATION



R-C VALUES FOR FILTER CONFIGURATION			
Thermal Resistance (°C/W)			
Junction to	Ambient	Case	Foot
RF1	N/A	513.9722 m	N/A
RF2	N/A	24.0007 m	N/A
RF3	N/A	397.8510 m	N/A
RF4	N/A	164.1760 m	N/A
Thermal Capacitance (Joules/°C)			
Junction to	Ambient	Case	Foot
CF1	N/A	1.3207 m	N/A
CF2	N/A	3.0448 m	N/A
CF3	N/A	20.2578 m	N/A
CF4	N/A	762.4247 m	N/A

Note: NA indicates not applicable

Reference:

[1] "A Simple Method of Generating Thermal Models for a Power MOSFET" by Wharton McDaniel and Kandarp Pandya. IEEE / SEMITHERM 2002

