

## R-C Thermal Model Parameters

### DESCRIPTION

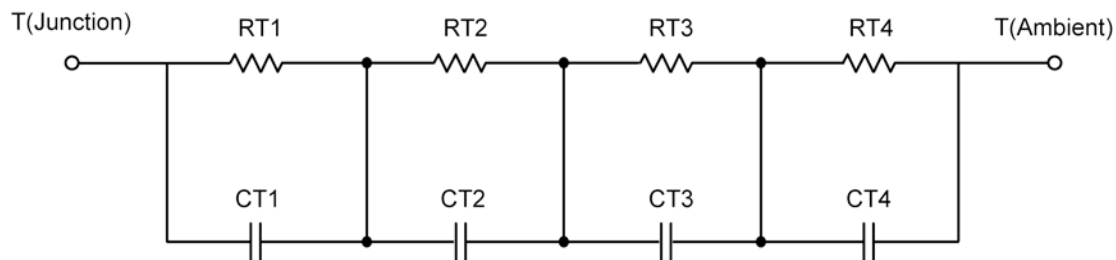
The parametric values in the R-C thermal model have been derived using curve-fitting techniques. These techniques are described in "[A Simple Method of Generating Thermal Models for a Power MOSFET](#)"[1]. When implemented in P-Spice, these values have matching characteristic curves to the Single Pulse Transient Thermal Impedance curves for the MOSFET.

R-C values for the electrical circuit in the Foster/Tank and Cauer/Filter configurations are included.

*Note:*

*For a detailed explanation of implementing these values in P-SPICE, refer to [Application Note AN609 Thermal Simulations Of Power MOSFETs on P-SPICE Platform](#).*

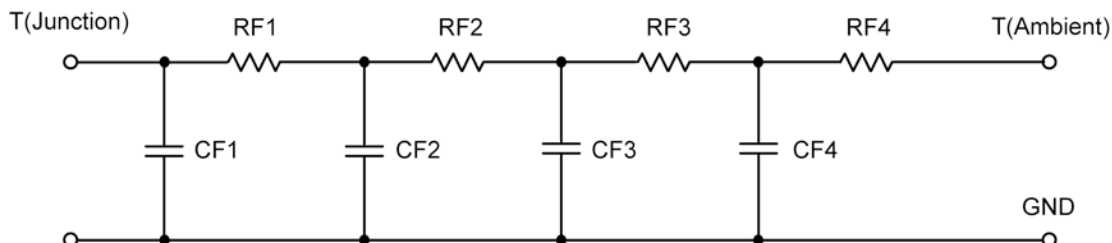
### R-C THERMAL MODEL FOR TANK CONFIGURATION



<b>R-C VALUES FOR TANK CONFIGURATION</b>			
Thermal Resistance (°C/W)			
Junction to	Ambient	Case	Foot
RT1	4.3871	3.6273 m	N/A
RT2	8.3445	504.3467 m	N/A
RT3	11.9702	972.1139 m	N/A
RT4	56.2982	919.9157 m	N/A
Thermal Capacitance (Joules/°C)			
Junction to	Ambient	Case	Foot
CT1	6.4552 m	1.9260 m	N/A
CT2	30.8887 m	787.5516 u	N/A
CT3	135.2045 m	18.2079 m	N/A
CT4	1.2453	9.3126 m	N/A

*This document is intended as a SPICE modeling guideline and does not constitute a commercial product data sheet. Designers should refer to the appropriate data sheet of the same number for guaranteed specification limits.*

**R-C THERMAL MODEL FOR FILTER CONFIGURATION**



<b>R-C VALUES FOR FILTER CONFIGURATION</b>			
Thermal Resistance (°C/W)			
Junction to	Ambient	Case	Foot
RF1	6.6587	6.0391 m	N/A
RF2	9.4845	670.9463 m	N/A
RF3	10.8212	1.0320	N/A
RF4	54.0356	691.0146 m	N/A
Thermal Capacitance (Joules/°C)			
Junction to	Ambient	Case	Foot
CF1	5.2055 m	125.4667 u	N/A
CF2	19.5545 m	695.7232 u	N/A
CF3	119.2870 m	6.0783 m	N/A
CF4	1.1197	527.9622 u	N/A

Note: NA indicates not applicable

Reference:

[1] "A Simple Method of Generating Thermal Models for a Power MOSFET" by Wharton McDaniel and Kandarp Pandya. IEEE / SEMITHERM 2002

