



R-C Thermal Model Parameters

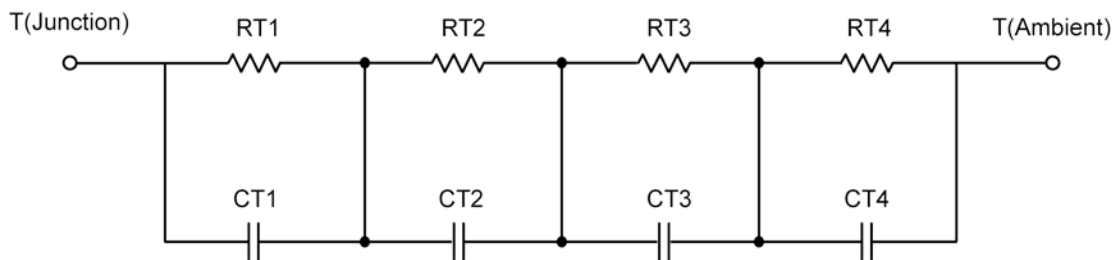
DESCRIPTION

The parametric values in the R-C thermal model have been derived using curve-fitting techniques. These techniques are described in "[A Simple Method of Generating Thermal Models for a Power MOSFET](#)"[1]. When implemented in P-Spice, these values have matching characteristic curves to the Single Pulse Transient Thermal Impedance curves for the MOSFET.

R-C values for the electrical circuit in the Foster/Tank and Cauer/Filter configurations are included.

Note:
For a detailed explanation of implementing these values in P-Spice, refer to [Application Note AN609 Thermal Simulations Of Power MOSFETs on P-Spice Platform](#).

R-C THERMAL MODEL FOR TANK CONFIGURATION



R-C VALUES FOR TANK CONFIGURATION			
Thermal Resistance (°C/W)			
Junction to	Ambient	Case	Foot
RT1	N/A	198.0252 m	N/A
RT2	N/A	392.8949 m	N/A
RT3	N/A	122.9581 m	N/A
RT4	N/A	486.1218 m	N/A
Thermal Capacitance (Joules/°C)			
Junction to	Ambient	Case	Foot
CT1	N/A	22.7397 m	N/A
CT2	N/A	9.0439 m	N/A
CT3	N/A	35.8401 m	N/A
CT4	N/A	1.0524 m	N/A

This document is intended as a SPICE modeling guideline and does not constitute a commercial product data sheet. Designers should refer to the appropriate data sheet of the same number for guaranteed specification limits.



R-C THERMAL MODEL FOR FILTER CONFIGURATION



R-C VALUES FOR FILTER CONFIGURATION			
Thermal Resistance (°C/W)			
Junction to	Ambient	Case	Foot
RF1	N/A	548.3528 m	N/A
RF2	N/A	561.0806 m	N/A
RF3	N/A	76.2397 m	N/A
RF4	N/A	14.3269 m	N/A
Thermal Capacitance (Joules/°C)			
Junction to	Ambient	Case	Foot
CF1	N/A	812.6426 u	N/A
CF2	N/A	3.2616 m	N/A
CF3	N/A	31.5082 m	N/A
CF4	N/A	61.3210 m	N/A

Note: NA indicates not applicable

Reference:

[1] "A Simple Method of Generating Thermal Models for a Power MOSFET" by Wharton McDaniel and Kandarp Pandya. IEEE / SEMITHERM 2002

