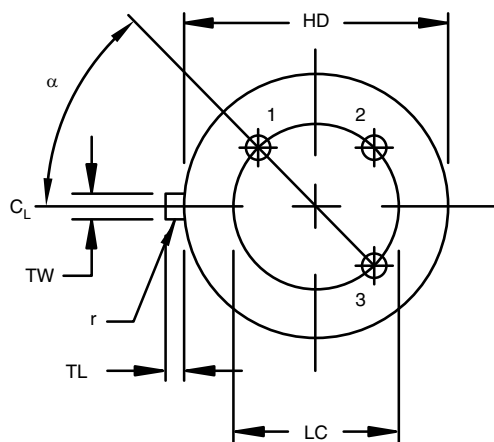
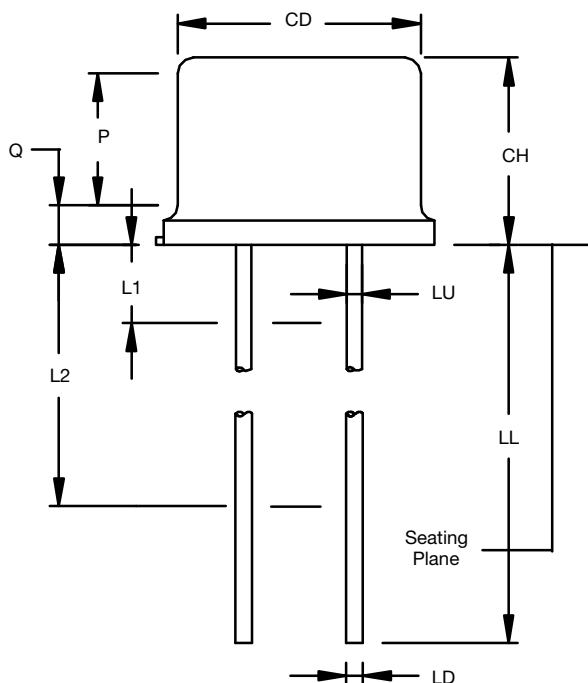


TO-205AD (TO-39 TALL LID)



DIM.	INCHES		MILLIMETERS	
	MIN.	MAX.	MIN.	MAX.
CD	0.305	0.335	7.75	8.51
CH	0.240	0.260	6.10	6.60
HD	0.335	0.370	8.51	9.40
LC ⁽⁶⁾	0.200 TP		5.08 TP	
LD ⁽⁷⁾⁽⁸⁾	0.016	0.021	0.41	0.53
LL ⁽⁷⁾⁽⁸⁾	0.500	0.750	12.70	19.05
LU ⁽⁷⁾⁽⁸⁾	0.016	0.019	0.41	0.48
L1 ⁽⁷⁾⁽⁸⁾	—	0.050	—	1.27
L2 ⁽⁷⁾⁽⁸⁾	0.250	—	6.35	—
P ⁽⁵⁾	0.100	—	2.54	—
Q ⁽⁴⁾	—	0.050	—	1.27
r ⁽⁹⁾	—	0.010	—	0.25
TL ⁽³⁾	0.029	0.045	0.74	1.14
TW ⁽²⁾	0.028	0.034	0.71	0.86
α ⁽⁶⁾	45° TP		45° TP	
ECN: S15-1675-Rev. D, 27-Jul-15				
DWG: 5511				

Notes

- (1) Dimensions are in inches. Metric equivalents are given for general information only.
- (2) Beyond radius (r) maximum, TW shall be held for a minimum length of 0.011" (0.028 mm).
- (3) Dimension TL measured from maximum HD.
- (4) Outline in this zone is not controlled.
- (5) Dimension CD shall not vary more than 0.010 (0.25 mm) in zone P. This zone is controlled for automatic handling.
- (6) Leads at gauge plane 0.054" + 0.001", - 0.000" (1.37 mm + 0.03 mm, - 0.00 mm) below seating plane shall be within 0.007" (0.18 mm) radius of true position (TP) at maximum material condition (MMC) relative to tab at MMC.
- (7) LU applies between L1 and L2, LD applies between L2 and L maximum. Diameter is uncontrolled in L1 and beyond LL minimum.
- (8) All three leads.
- (9) Radius (r) applies to both inside corners of tab.
- (10) Drain is electrically connected to the case.