

R-C Thermal Model Parameters

DESCRIPTION

The parametric values in the R-C thermal model have been derived using curve-fitting techniques. These techniques are described in "[A Simple Method of Generating Thermal Models for a Power MOSFET](#)"[1]. When implemented in P-Spice, these values have matching characteristic curves to the Single Pulse Transient Thermal Impedance curves for the MOSFET.

R-C values for the electrical circuit in the Foster/Tank and Cauer/Filter configurations are included.

Note:

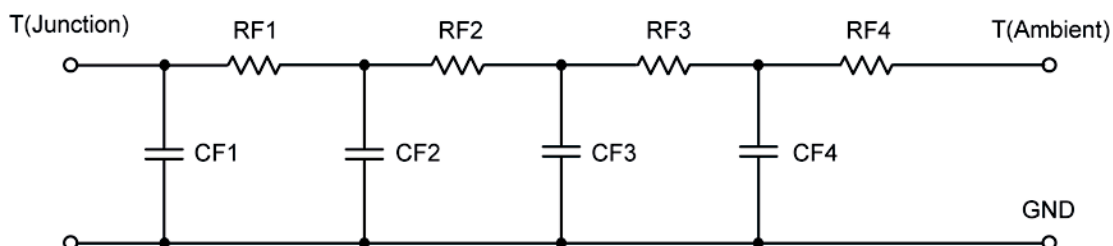
For a detailed explanation of implementing these values in P-SPICE, refer to [Application Note AN609 Thermal Simulations Of Power MOSFETs on P-SPICE Platform](#).

R-C THERMAL MODEL FOR TANK CONFIGURATION



R-C VALUES FOR TANK CONFIGURATION			
Thermal Resistance (°C/W)			
Junction to	Ambient	Case	Foot
RT1	5.5431	28.8945 m	N/A
RT2	19.4536	1.1108	N/A
RT3	15.0558	1.4224	N/A
RT4	48.9104	1.4419	N/A
Thermal Capacitance (Joules/°C)			
Junction to	Ambient	Case	Foot
CT1	2.1071 m	686.5381 u	N/A
CT2	13.3149 m	190.7991 u	N/A
CT3	178.1937 m	1.3230 m	N/A
CT4	1.4793	1.2716 m	N/A

This document is intended as a SPICE modeling guideline and does not constitute a commercial product data sheet. Designers should refer to the appropriate data sheet of the same number for guaranteed specification limits.

R-C THERMAL MODEL FOR FILTER CONFIGURATION**R-C VALUES FOR FILTER CONFIGURATION**

Thermal Resistance (°C/W)			
Junction to	Ambient	Case	Foot
RF1	6.1642	1.7953	N/A
RF2	22.2142	1.4822	N/A
RF3	16.1658	571.1917 m	N/A
RF4	44.3978	150.0745 m	N/A
Thermal Capacitance (Joules/°C)			
Junction to	Ambient	Case	Foot
CF1	1.4684 m	145.1296 u	N/A
CF2	10.2828 m	578.5153 u	N/A
CF3	190.2916 m	867.6748 u	N/A
CF4	1.4192	38.2575 u	N/A

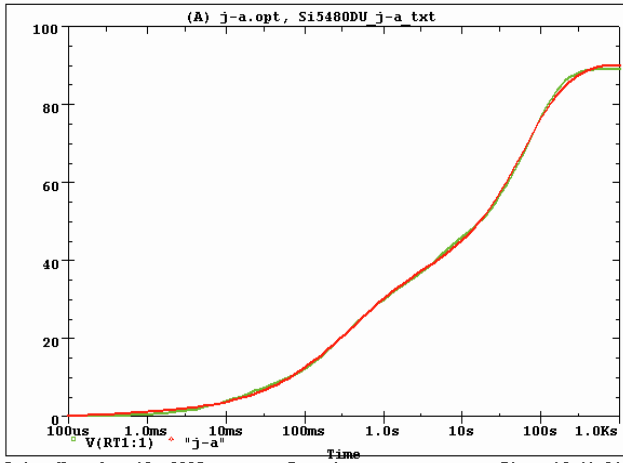
Note: NA indicates not applicable

Reference:

[1] "A Simple Method of Generating Thermal Models for a Power MOSFET" by Wharton McDaniel and Kandarp Pandya. IEEE / SEMITHERM 2002

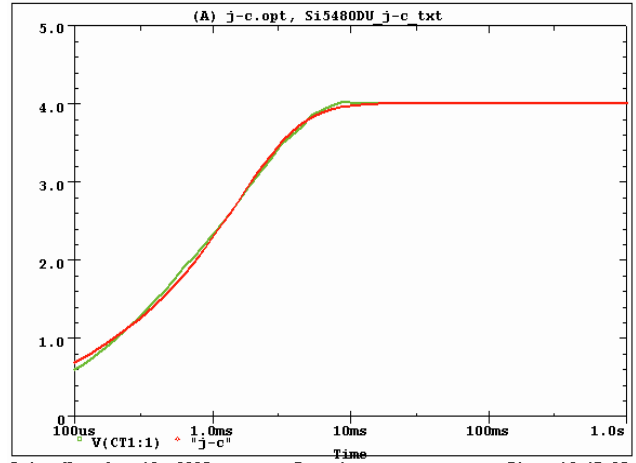


Si5480DU Tank j-a Temperature: 27.0



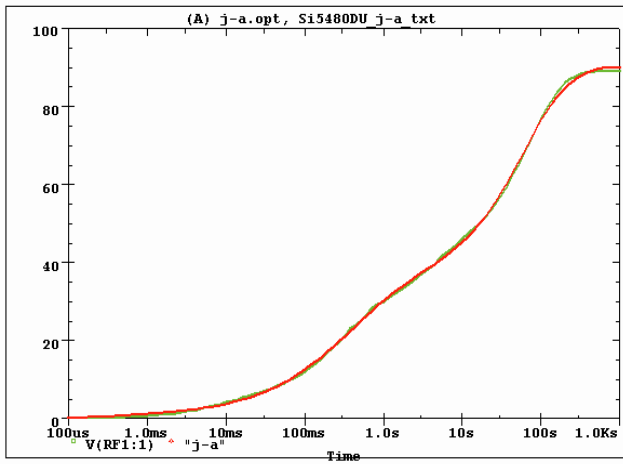
Date: November 10, 2005 Page 1 Time: 16:41:04

Si5480DU Tank j-c Temperature: 27.0



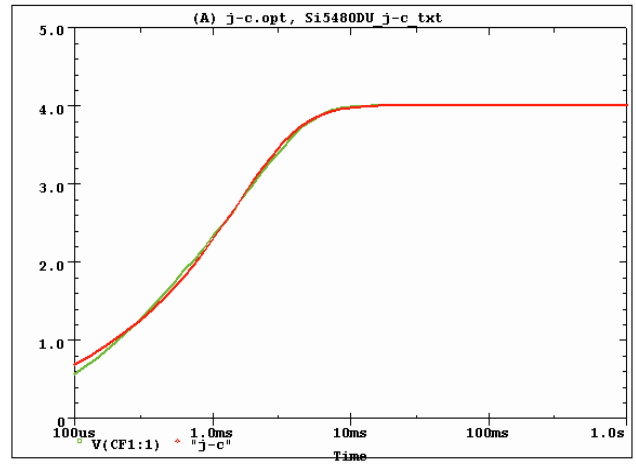
Date: November 10, 2005 Page 1 Time: 16:47:25

Si5480DU Filter j-a Temperature: 27.0



Date: November 10, 2005 Page 1 Time: 17:39:24

Si5480DU Filter j-c Temperature: 27.0



Date: November 10, 2005 Page 1 Time: 17:47:40