

Automotive P-Channel 80 V (D-S) 175 °C MOSFET

DESCRIPTION

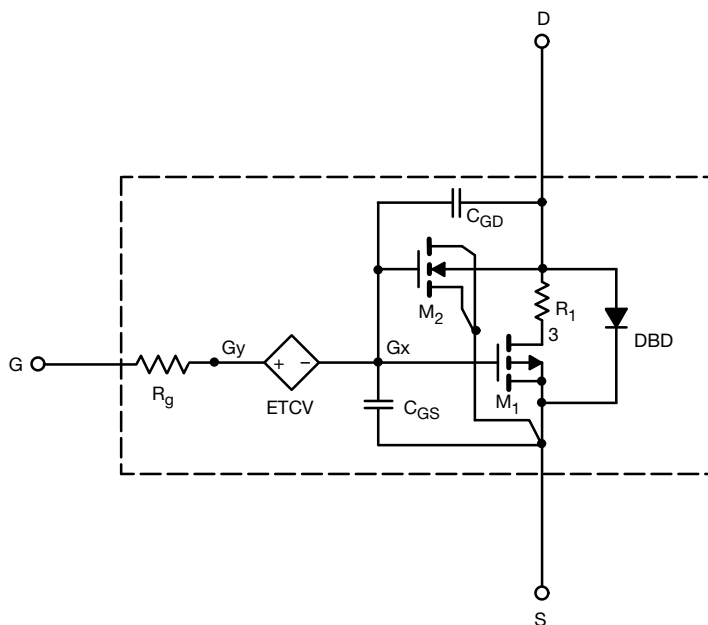
The attached SPICE model describes the typical electrical characteristics of the p-channel vertical DMOS. The sub-circuit model is extracted and optimized over the -55 °C to +125 °C temperature ranges under the pulsed 0 V to 10 V gate drive. The saturated output impedance is best fit at the gate bias near the threshold voltage.

A novel gate-to-drain feedback capacitance network is used to model the gate charge characteristics while avoiding convergence difficulties of the switched C_{gd} model. All model parameter values are optimized to provide a best fit to the measured electrical data and are not intended as an exact physical interpretation of the device.

CHARACTERISTICS

- P-channel vertical DMOS
- Macro model (subcircuit model)
- Level 3 MOS
- Apply for both linear and switching application
- Accurate over the -55 °C to +125 °C temperature range
- Model the gate charge

SUBCIRCUIT MODEL SCHEMATIC



Note

- This document is intended as a SPICE modeling guideline and does not constitute a commercial product datasheet. Designers should refer to the appropriate datasheet of the same number for guaranteed specification limits



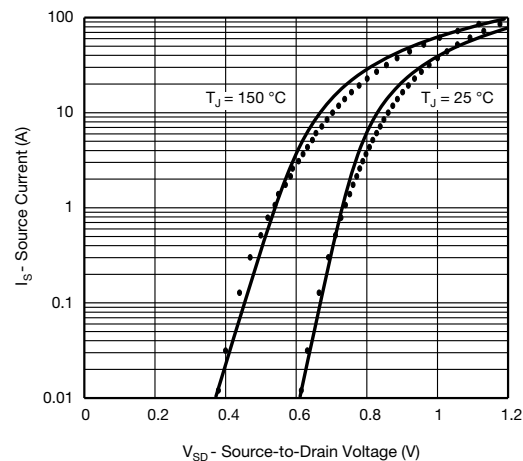
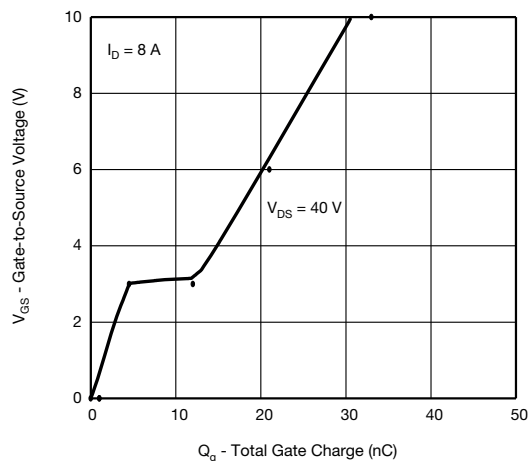
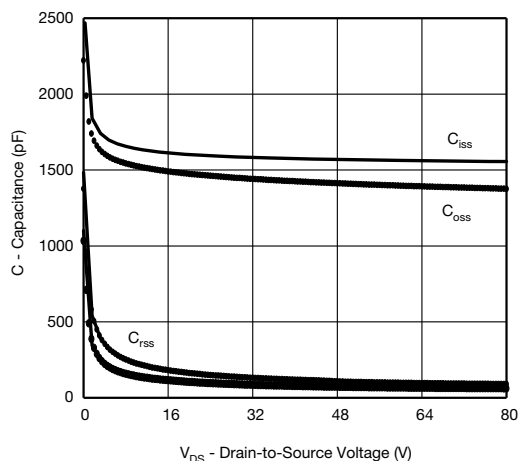
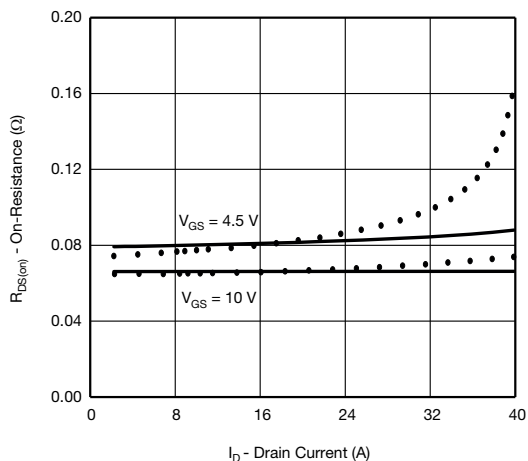
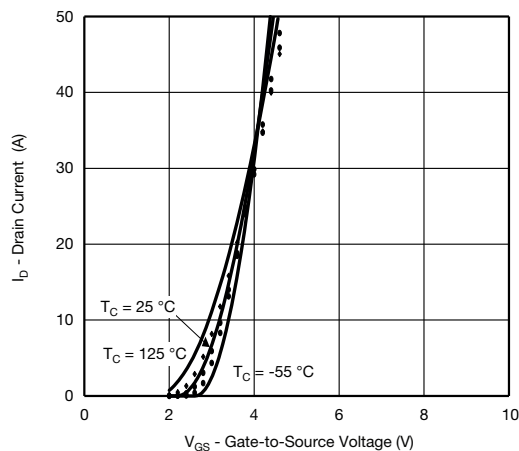
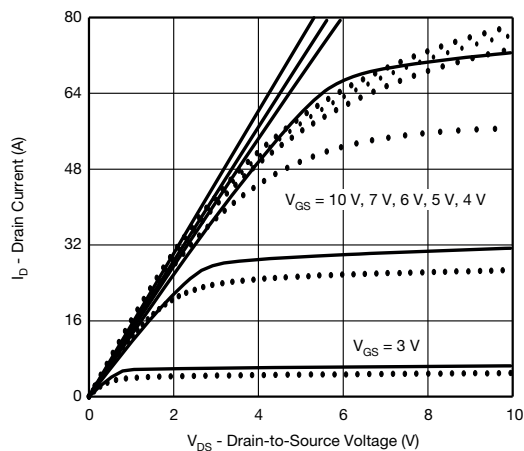
SPECIFICATIONS ($T_J = 25^\circ\text{C}$, unless otherwise noted)					
PARAMETER	SYMBOL	TEST CONDITIONS	SIMULATED DATA	MEASURED DATA	UNIT
Static					
Gate threshold voltage	$V_{GS(th)}$	$V_{DS} = V_{GS}$, $I_D = -250\ \mu\text{A}$	2	-	V
Drain-source on-state resistance ^a	$R_{DS(on)}$	$V_{GS} = -10\ \text{V}$, $I_D = -10\ \text{A}$	0.0662	0.0651	Ω
		$V_{GS} = -4.5\ \text{V}$, $I_D = -7\ \text{A}$	0.0797	0.0775	
Forward transconductance ^a	g_{fs}	$V_{DS} = -15\ \text{V}$, $I_D = -10\ \text{A}$	19	20	S
Diode forward voltage	V_{SD}	$I_F = -8\ \text{A}$	-0.82	-0.84	V
Dynamic ^b					
Input capacitance	C_{iss}	$V_{DS} = -25\ \text{V}$, $V_{GS} = 0\ \text{V}$, $f = 1\ \text{MHz}$	1590	1459	pF
Output capacitance	C_{oss}		148	148	
Reverse transfer capacitance	C_{rss}		96	95	
Total gate charge	Q_g	$V_{DS} = -40\ \text{V}$, $V_{GS} = -10\ \text{V}$, $I_D = -8\ \text{A}$	32	33	nC
Gate-source charge	Q_{gs}		4.5	4.5	
Gate-drain charge	Q_{gd}		7.5	7.5	

Notes

- a. Pulse test; pulse width $\leq 300\ \mu\text{s}$, duty cycle $\leq 2\ \%$
b. Guaranteed by design, not subject to production testing



COMPARISON OF MODEL WITH MEASURED DATA ($T_J = 25^\circ\text{C}$, unless otherwise noted)



Note

- Dots and squares represent measured data

Copyright: Vishay Intertechnology, Inc.