

## N-Channel 2.5 V (G-S) MOSFET

### DESCRIPTION

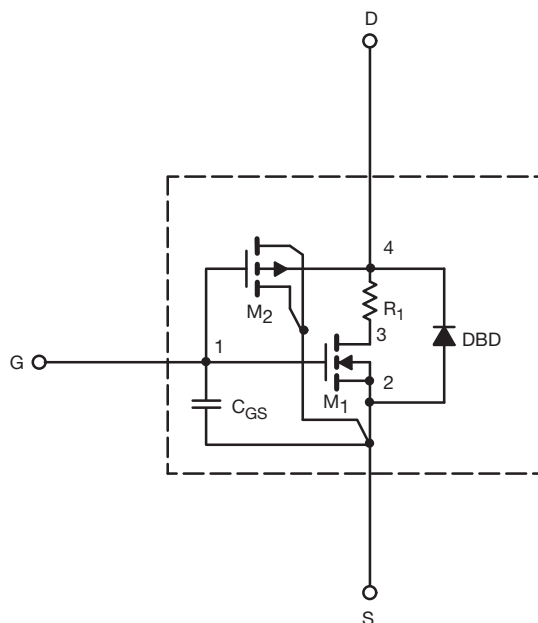
The attached SPICE model describes the typical electrical characteristics of the n-channel vertical DMOS. The subcircuit model is extracted and optimized over the - 55 °C to 125 °C temperature ranges under the pulsed 0 V to 5 V gate drive. The saturated output impedance is best fit at the gate bias near the threshold voltage.

A novel gate-to-drain feedback capacitance network is used to model the gate charge characteristics while avoiding convergence difficulties of the switched  $C_{gd}$  model. All model parameter values are optimized to provide a best fit to the measured electrical data and are not intended as an exact physical interpretation of the device.

### CHARACTERISTICS

- N-Channel Vertical DMOS
- Macro Model (Subcircuit Model)
- Level 3 MOS
- Apply for both Linear and Switching Application
- Accurate over the - 55 °C to + 125 °C Temperature Range
- Model the Gate Charge

### SUBCIRCUIT MODEL SCHEMATIC



### Note

- This document is intended as a SPICE modeling guideline and does not constitute a commercial product datasheet. Designers should refer to the appropriate datasheet of the same number for guaranteed specification limits.



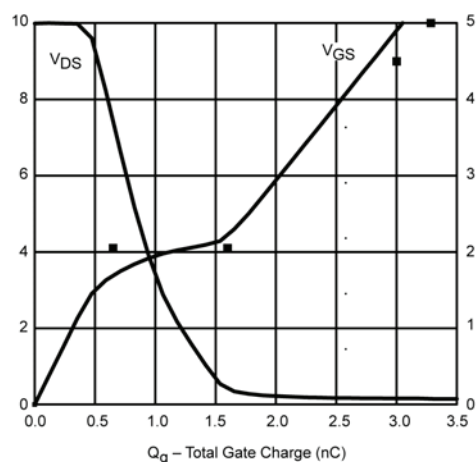
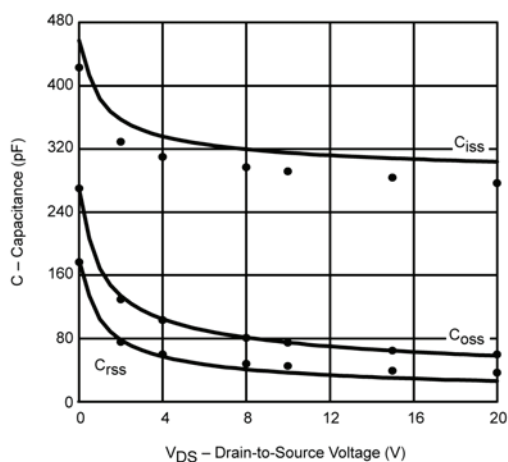
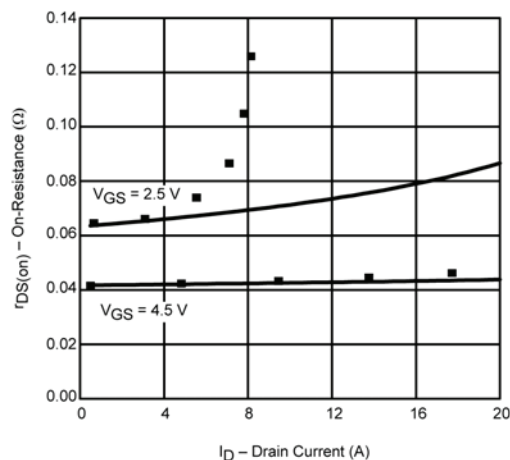
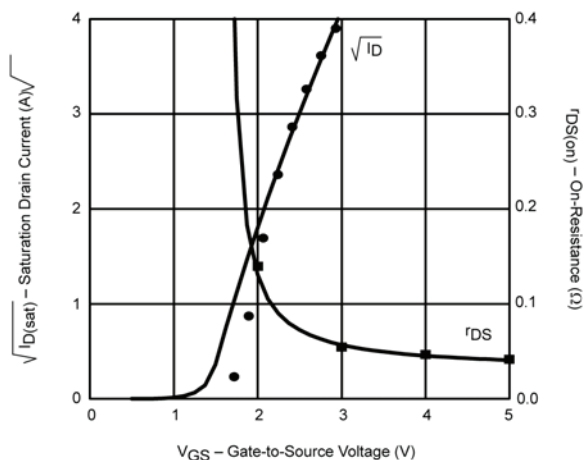
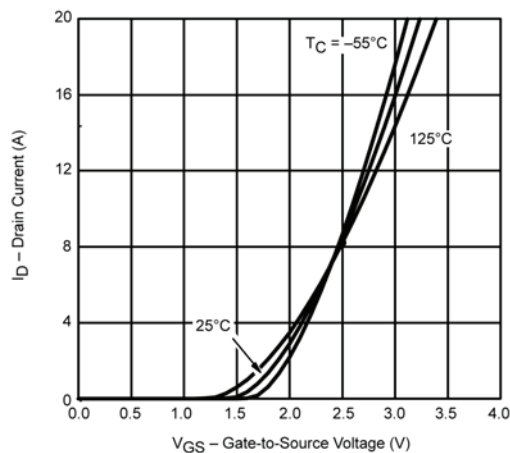
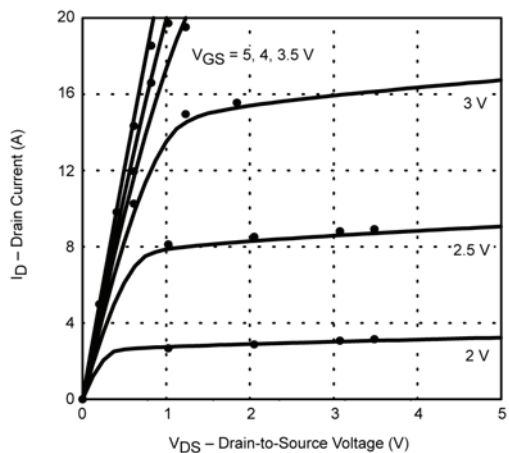
SPECIFICATIONS ( $T_J = 25^\circ\text{C}$ , unless otherwise noted)					
PARAMETER	SYMBOL	TEST CONDITIONS	SIMULATED DATA	MEASURED DATA	UNIT
<b>Static</b>					
Gate Threshold Voltage	$V_{GS(th)}$	$V_{DS} = V_{GS}$ , $I_D = 250\ \mu\text{A}$	1.1	-	V
On-State Drain Current <sup>a</sup>	$I_{D(on)}$	$V_{DS} = 5\ \text{V}$ , $V_{GS} = 4.5\ \text{V}$	47	-	A
Drain-Source On-State Resistance <sup>a</sup>	$R_{DS(on)}$	$V_{GS} = 4.5\ \text{V}$ , $I_D = 4\ \text{A}$	0.042	0.045	$\Omega$
		$V_{GS} = 2.5\ \text{V}$ , $I_D = 3.4\ \text{A}$	0.070	0.070	
Forward Transconductance <sup>a</sup>	$g_{fs}$	$V_{DS} = 10\ \text{V}$ , $I_D = 4\ \text{A}$	11	11.3	S
Diode Forward Voltage	$V_{SD}$	$I_S = 1.6\ \text{A}$ , $V_{GS} = 0\ \text{V}$	0.80	0.75	V
<b>Dynamic<sup>b</sup></b>					
Total Gate Charge	$Q_g$	$V_{DS} = 10\ \text{V}$ , $V_{GS} = 4.5\ \text{V}$ , $I_D = 4\ \text{A}$	2.8	3	nC
Gate-Source Charge	$Q_{gs}$		0.65	0.65	
Gate-Drain Charge	$Q_{gd}$		0.95	0.95	
Turn-On Delay Time	$t_{d(on)}$	$V_{DD} = 10\ \text{V}$ , $R_L = 10\ \Omega$ $I_D = 1\ \text{A}$ , $V_{GEN} = 4.5\ \text{V}$ , $R_g = 6\ \Omega$	36	35	ns
Rise Time	$t_r$		38	50	
Turn-Off Delay Time	$t_{d(off)}$		16	20	
Fall Time	$t_f$		5	15	

**Notes**

- a. Pulse test; pulse width  $\leq 300\ \mu\text{s}$ , duty cycle  $\leq 2\ \%$ .  
b. Guaranteed by design, not subject to production testing.



## COMPARISON OF MODEL WITH MEASURED DATA ( $T_J = 25^\circ\text{C}$ , unless otherwise noted)



### Note

- Dots and squares represent measured data.