

P-Channel 8 V (D-S) MOSFET

DESCRIPTION

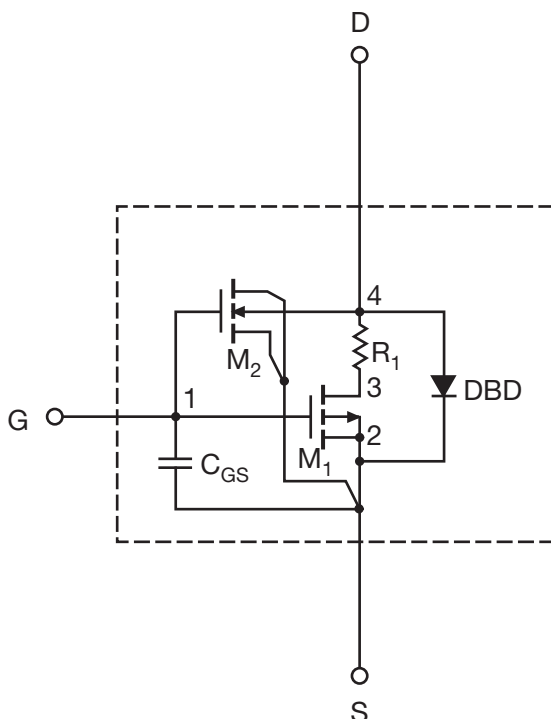
The attached SPICE model describes the typical electrical characteristics of the p-channel vertical DMOS. The subcircuit model is extracted and optimized over the - 55 °C to 125 °C temperature ranges under the pulsed 0 V to 5 V gate drive. The saturated output impedance is best fit at the gate bias near the threshold voltage.

A novel gate-to-drain feedback capacitance network is used to model the gate charge characteristics while avoiding convergence difficulties of the switched C_{gd} model. All model parameter values are optimized to provide a best fit to the measured electrical data and are not intended as an exact physical interpretation of the device.

CHARACTERISTICS

- P-Channel Vertical DMOS
- Macro Model (Subcircuit Model)
- Level 3 MOS
- Apply for both Linear and Switching Application
- Accurate over the - 55 °C to + 125 °C Temperature Range
- Model the Gate Charge

SUBCIRCUIT MODEL SCHEMATIC



Note

- This document is intended as a SPICE modeling guideline and does not constitute a commercial product datasheet. Designers should refer to the appropriate datasheet of the same number for guaranteed specification limits.



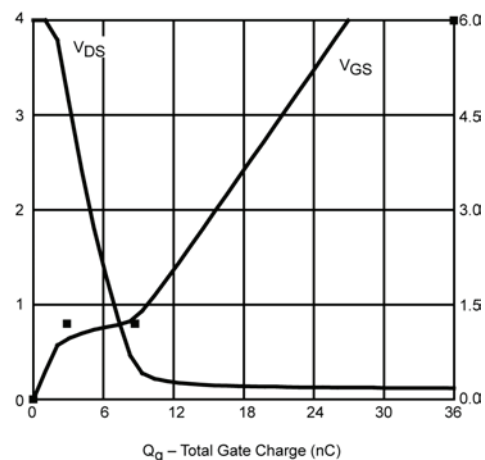
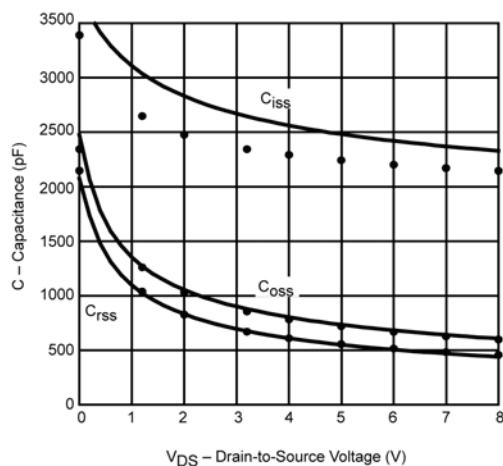
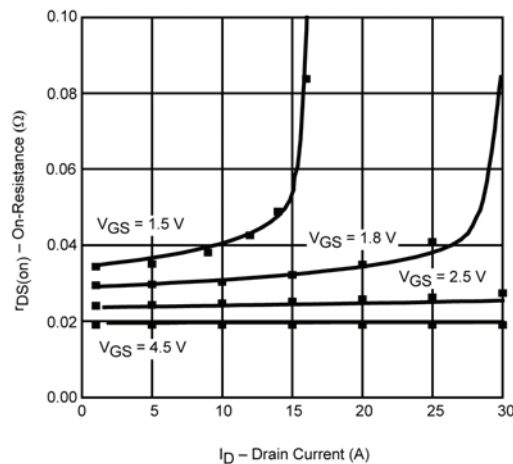
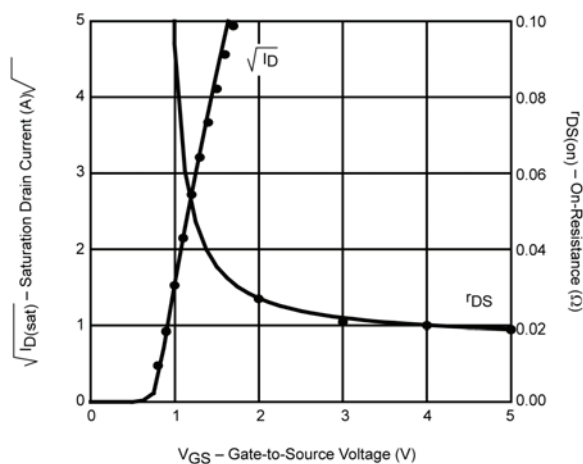
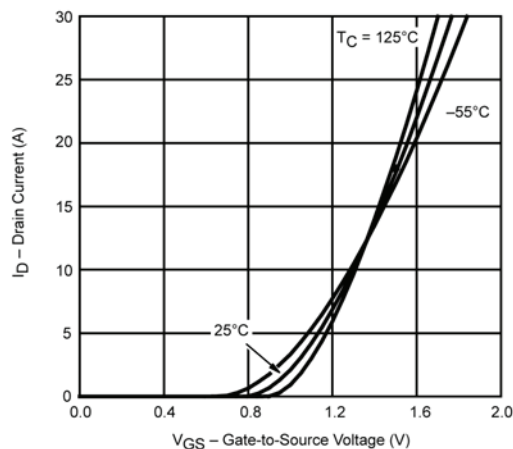
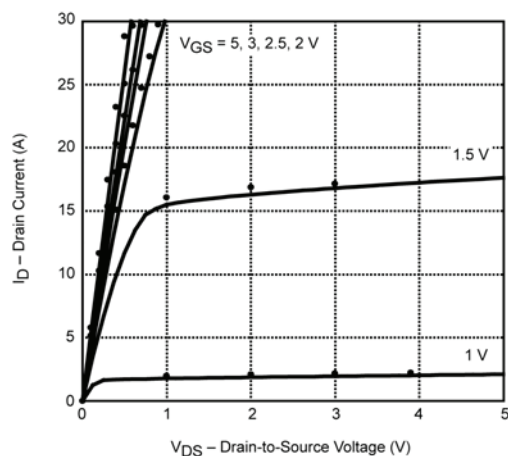
SPECIFICATIONS ($T_J = 25^\circ\text{C}$, unless otherwise noted)					
PARAMETER	SYMBOL	TEST CONDITIONS	SIMULATED DATA	MEASURED DATA	UNIT
Static					
Gate Threshold Voltage	$V_{GS(th)}$	$V_{DS} = V_{GS}$, $I_D = -250\ \mu\text{A}$	0.63	-	V
On-State Drain Current ^a	$I_{D(on)}$	$V_{DS} = -5\ \text{V}$, $V_{GS} = -4.5\ \text{V}$	207	-	A
Drain-Source On-State Resistance ^a	$R_{DS(on)}$	$V_{GS} = -4.5\ \text{V}$, $I_D = -7\ \text{A}$	0.019	0.019	Ω
		$V_{GS} = -2.5\ \text{V}$, $I_D = -6.2\ \text{A}$	0.024	0.024	
		$V_{GS} = -1.8\ \text{V}$, $I_D = -5.2\ \text{A}$	0.030	0.028	
		$V_{GS} = -1.5\ \text{V}$, $I_D = -3\ \text{A}$	0.036	0.035	
Forward Transconductance ^a	g_{fs}	$V_{DS} = -5\ \text{V}$, $I_D = -7\ \text{A}$	31	28	S
Diode Forward Voltage	V_{SD}	$I_S = -1.7\ \text{A}$, $V_{GS} = 0\ \text{V}$	-0.80	-0.63	V
Dynamic^b					
Total Gate Charge	Q_g	$V_{DS} = -4\ \text{V}$, $V_{GS} = -4.5\ \text{V}$, $I_D = -7\ \text{A}$	22	28	nC
Gate-Source Charge	Q_{gs}		2.9	2.9	
Gate-Drain Charge	Q_{gd}		5.8	5.8	

Notes

- a. Pulse test; pulse width $\leq 300\ \mu\text{s}$, duty cycle $\leq 2\ \%$.
b. Guaranteed by design, not subject to production testing.



COMPARISON OF MODEL WITH MEASURED DATA ($T_J = 25^\circ\text{C}$, unless otherwise noted)



Note

- Dots and squares represent measured data.