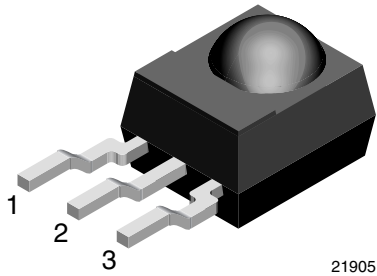


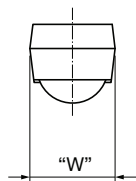
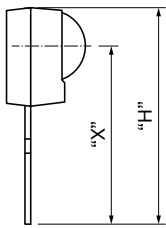
**Bent Leads:**  
**H = 12.25 mm, W = 6 mm, X = 9.55 mm**



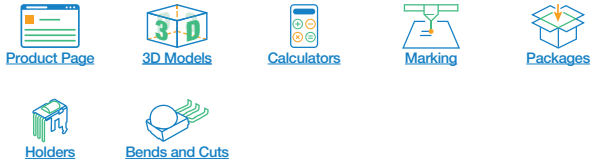
21905

**AVAILABLE FOR**

- Mold

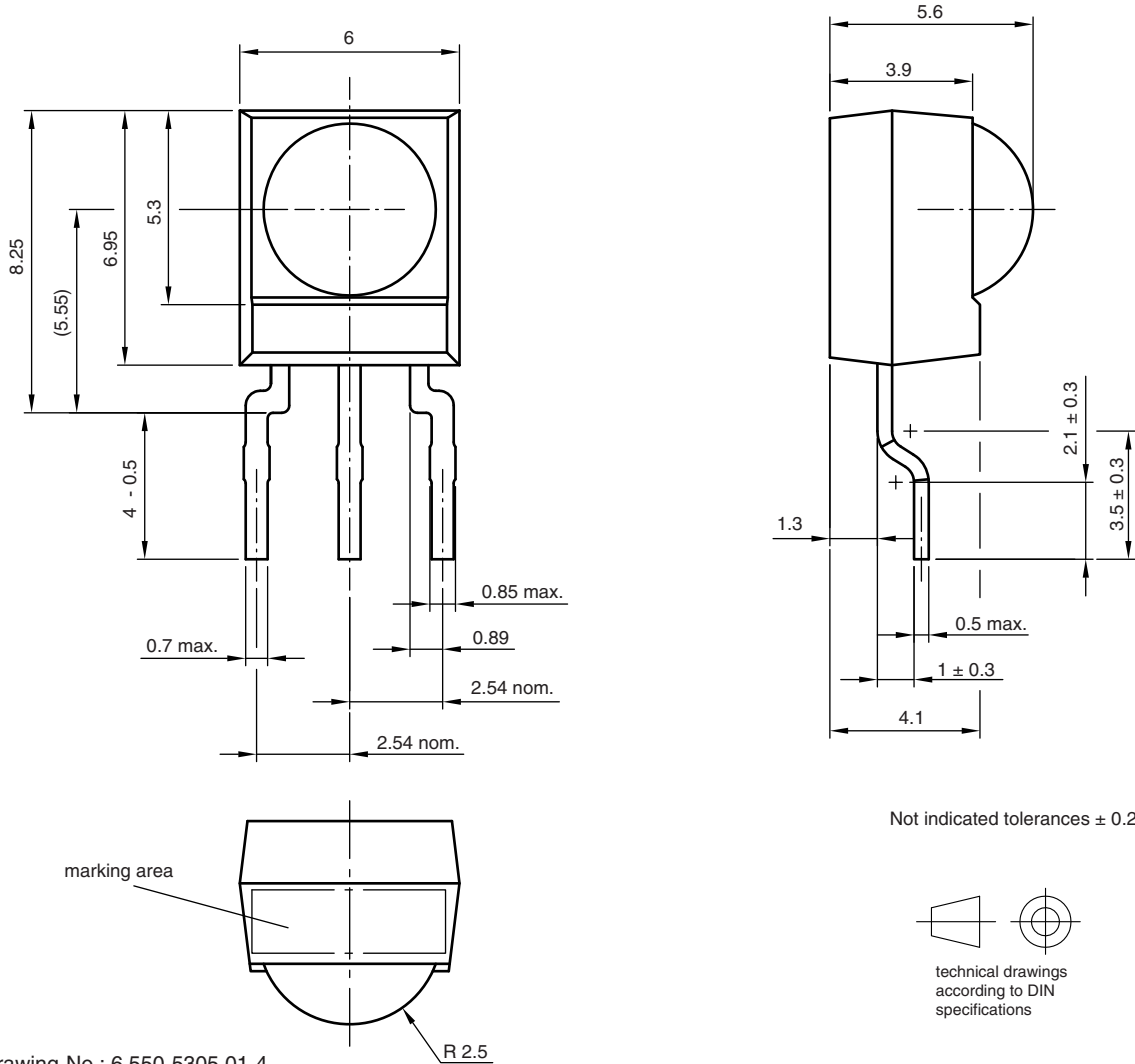


20258

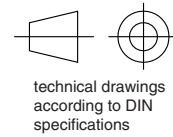
**LINKS TO ADDITIONAL RESOURCES**


NAME	LENS AXIS (X)	VIEW	TYPE	HEIGHT (H)	WIDTH (W)	DEPTH (D)
DF1	9.55	-	Bend	12.25	6	-

**MECHANICAL DIMENSIONS** in millimeters

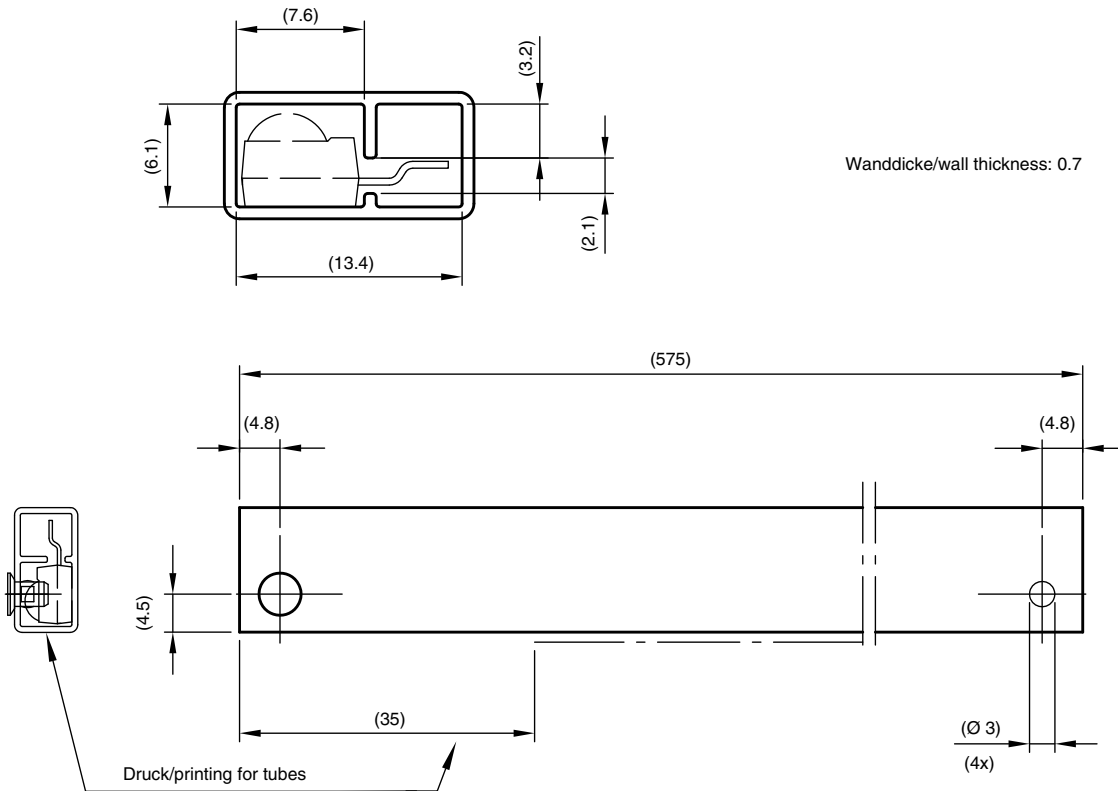


Not indicated tolerances ± 0.2



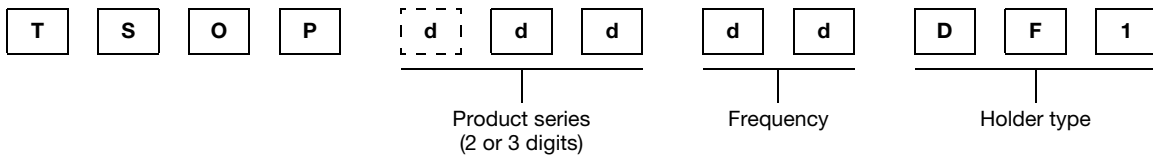
Drawing-No.: 6.550-5305.01-4  
 Issue: 1; 29.09.09  
 21904

**PACKAGING DIMENSIONS** in millimeters



Drawing-No.: 9.700-5345.0-4  
 Issue: 1; 29.09.09  
 21903

**ORDERING INFORMATION**



**Note**

- d = "digit", please consult the list of available series on the previous page to create a valid part number

**Example: TSOP34338DF1**

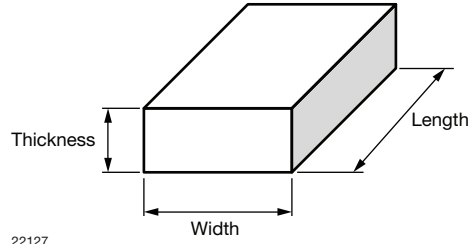
**PACKAGING QUANTITY**

- 90 pieces per tube
- 63 tubes per carton



**OUTER PACKAGING**

**CARTON BOX DIMENSIONS** in millimeters



KINDS OF CARTON BOX	THICKNESS	WIDTH	LENGTH
Packaging plastic tubes (normal / auxiliary devices)	80	150	600
Packaging plastic trays (devices with metal holders)	120	290	490
Tape and reel box (taping in reels)	400	310	410
Ammo-box (zigzag taping)	50	130	350