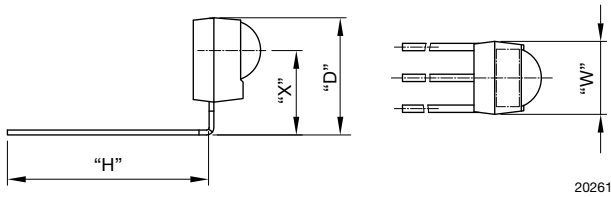
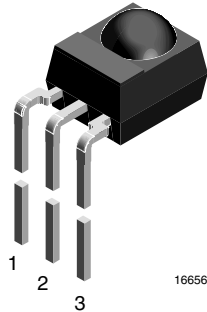


Bent Leads:
D = 9.65 mm, H = 20.8 mm, W = 6 mm, X = 6.95 mm

AVAILABLE FOR

- Mold



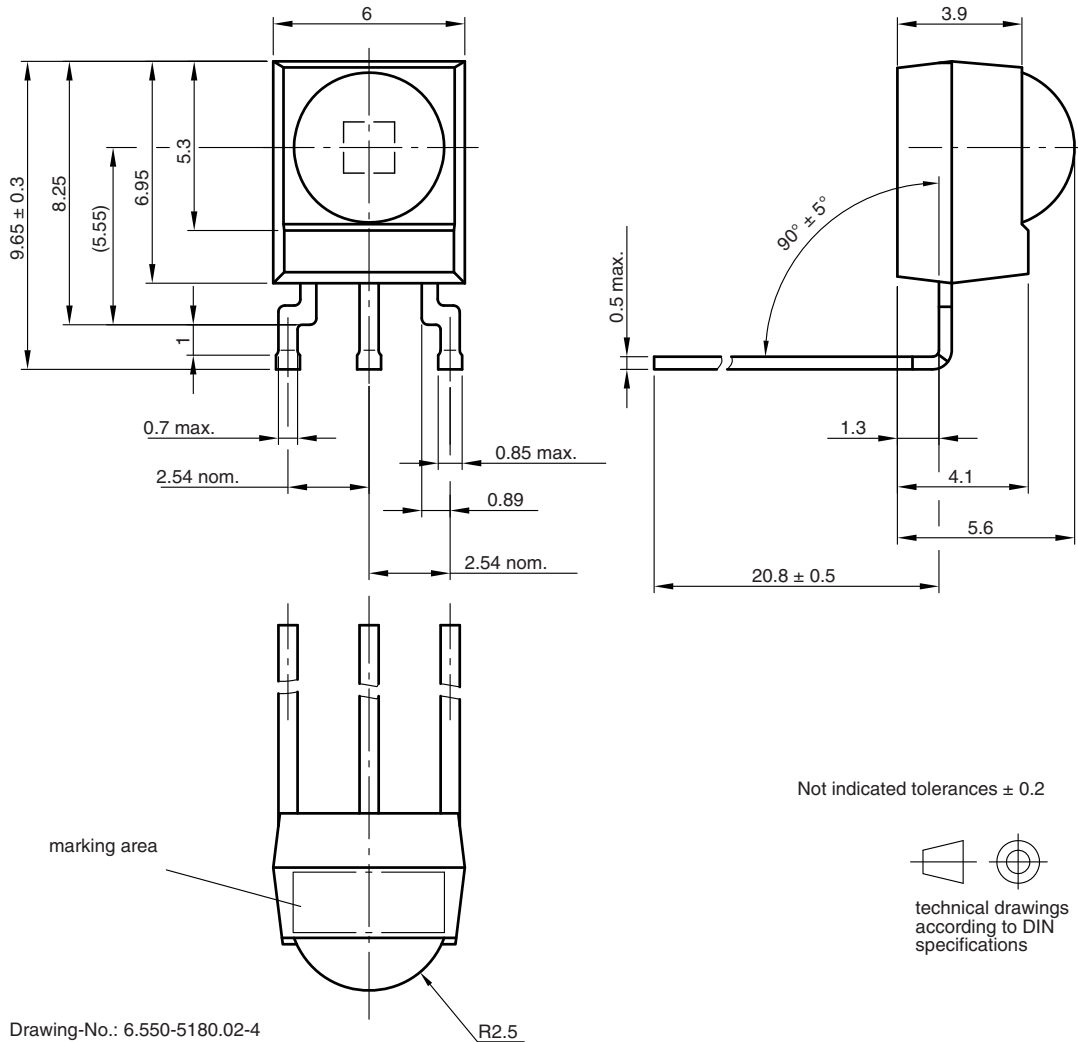
LINKS TO ADDITIONAL RESOURCES



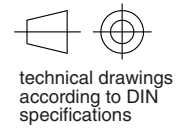
NAME	LENS AXIS (X)	VIEW	TYPE	HEIGHT (H)	WIDTH (W)	DEPTH (D)
SB1	6.95	-	Bend	20.8	6	9.65



MECHANICAL DIMENSIONS in millimeters

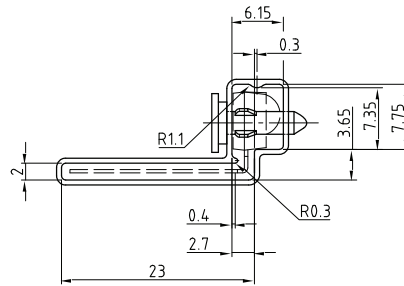


Not indicated tolerances ± 0.2

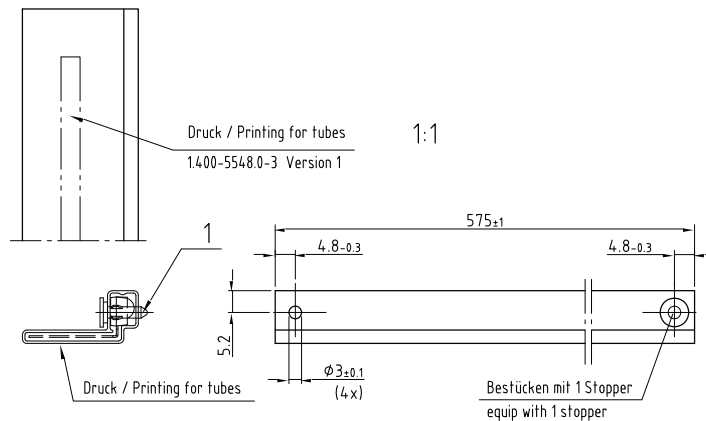


Drawing-No.: 6.550-5180.02-4
 Issue: 6; 14.05.09
 16045

PACKAGING DIMENSIONS in millimeters

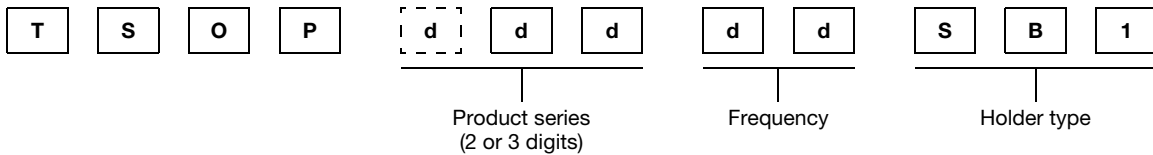


Wanddicke/wall thickness: 0.6^{+0.02}/_{-0.01}
 Geradheit/Straightness 2
 Schnittwinkel/cut 90° ±0.5°
 Innenradien/inner radii max 0.5
 Geprüft nach/approved to: LV 5145



Drawing-No.: 9.700-5206.0-4
 Rev. 13; Date: 09.06.06
 20251

ORDERING INFORMATION



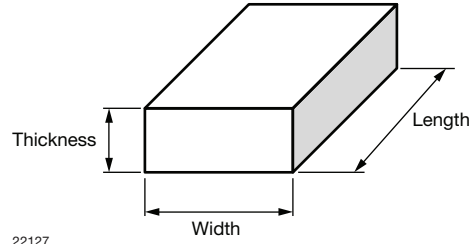
Note

- d = "digit", please consult the list of available series on the previous page to create a valid part number

Example: TSOP14338SB1

PACKAGING QUANTITY

- 90 pieces per tube
- 30 tubes per carton

OUTER PACKAGING
CARTON BOX DIMENSIONS in millimeters


KINDS OF CARTON BOX	THICKNESS	WIDTH	LENGTH
Packaging plastic tubes (normal / auxiliary devices)	80	150	600
Packaging plastic trays (devices with metal holders)	120	290	490
Tape and reel box (taping in reels)	400	310	410
Ammo-box (zigzag taping)	50	130	350