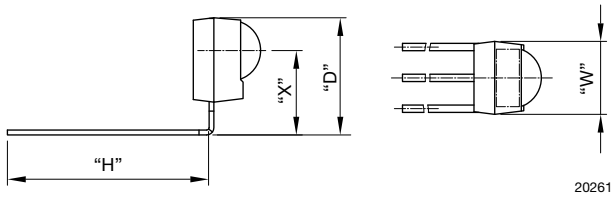
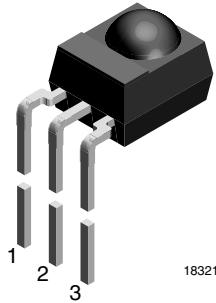


Bent Leads:
D = 9 mm, H = 20.8 mm, W = 6 mm, X = 6.3 mm

AVAILABLE FOR

- Mold

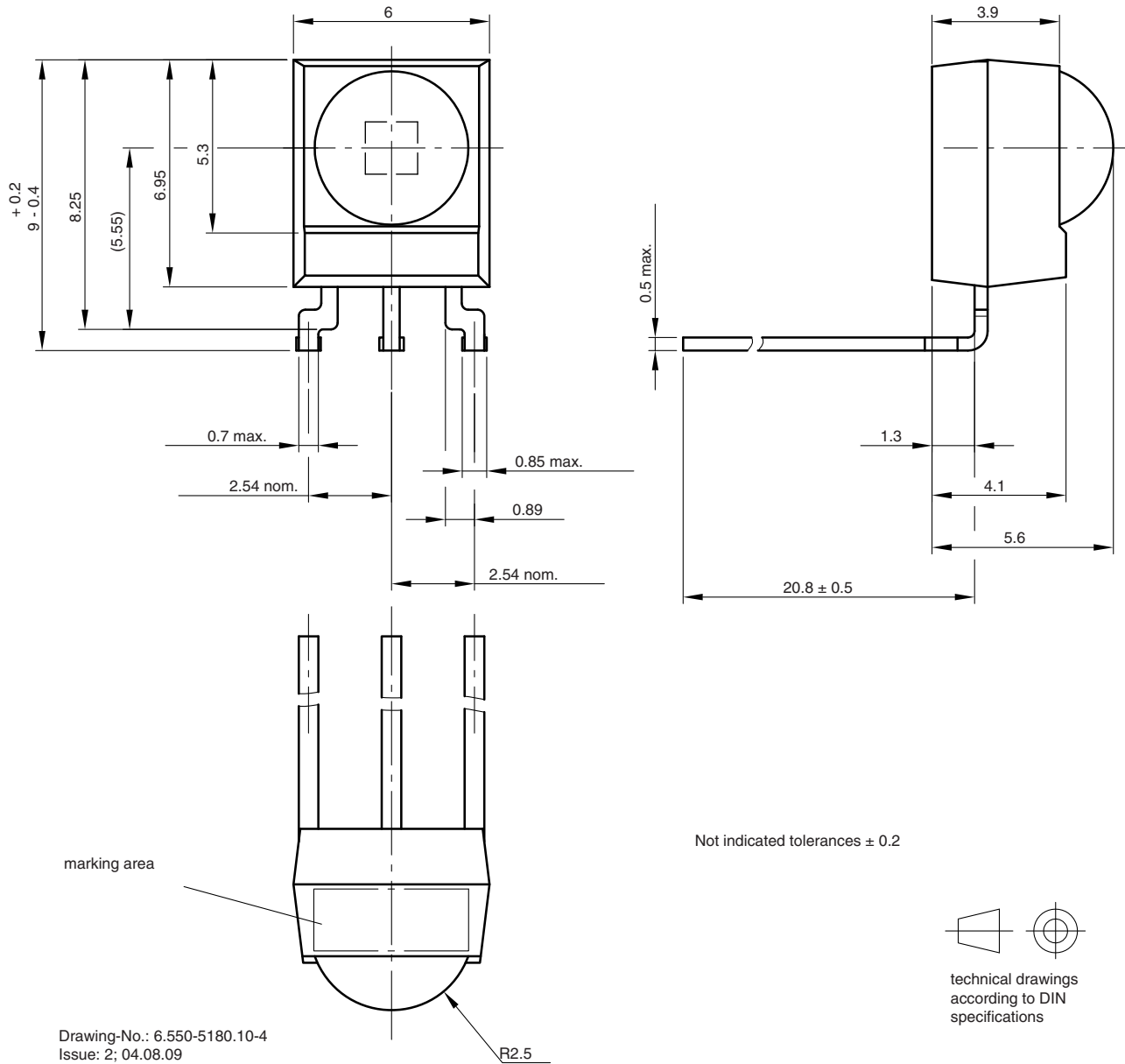


LINKS TO ADDITIONAL RESOURCES



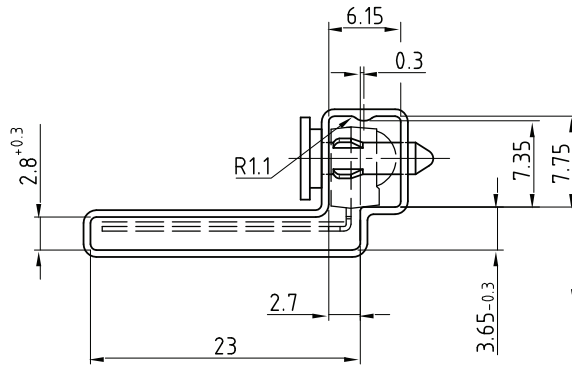
NAME	LENS AXIS (X)	VIEW	TYPE	HEIGHT (H)	WIDTH (W)	DEPTH (D)
SP1	6.3	-	Bend	20.8	6	9

MECHANICAL DIMENSIONS in millimeters

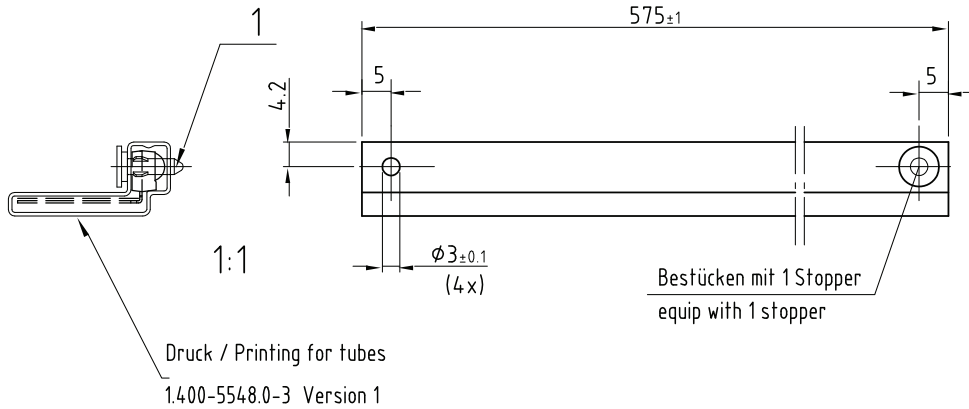


Drawing-No.: 6.550-5180.10-4
 Issue: 2; 04.08.09
 17277

PACKAGING DIMENSIONS in millimeters



Wanddicke/wall thickness: $0.6 \begin{smallmatrix} +0.2 \\ -0.1 \end{smallmatrix}$
Geradheit/Straightness 2
Schnittwinkel/cut $90^\circ \pm 1^\circ$
Innenradien/inner radii max 0.5
Geprüft nach/approved to: LV 5145

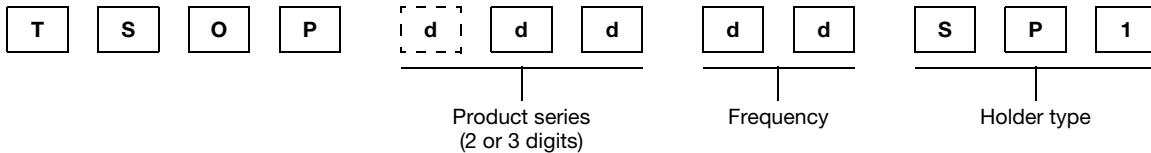


Bestücken mit 1 Stopper
equip with 1 stopper

Drawing-No.: 9.700-5275.0-4
Rev. 2; Date: 20.11.03

20271

ORDERING INFORMATION



Note

- d = "digit", please consult the list of available series on the previous page to create a valid part number

Example: TSOP14638SP1

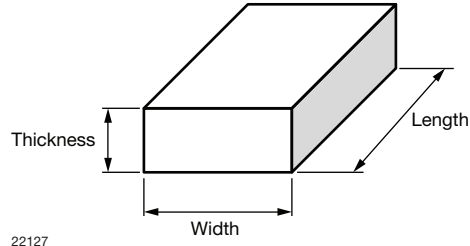
PACKAGING QUANTITY

- 90 pieces per tube
- 32 tubes per carton



OUTER PACKAGING

CARTON BOX DIMENSIONS in millimeters



KINDS OF CARTON BOX	THICKNESS	WIDTH	LENGTH
Packaging plastic tubes (normal / auxiliary devices)	80	150	600
Packaging plastic trays (devices with metal holders)	120	290	490
Tape and reel box (taping in reels)	400	310	410
Ammo-box (zigzag taping)	50	130	350