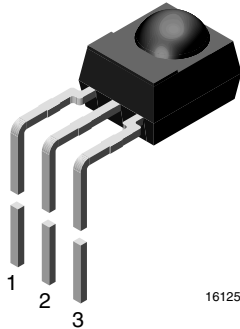
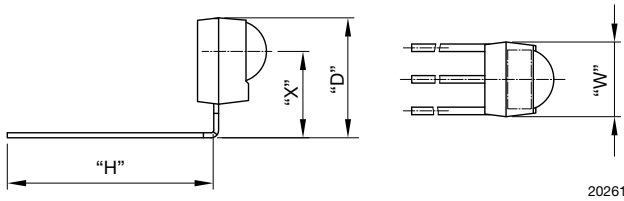


**Bent Leads:**  
**D = 12.6 mm, H = 11.45 mm, W = 6 mm, X = 9.9 mm**


**AVAILABLE FOR**

- Mold


**LINKS TO ADDITIONAL RESOURCES**

[Product Page](#)

[3D Models](#)

[Calculators](#)

[Marking](#)

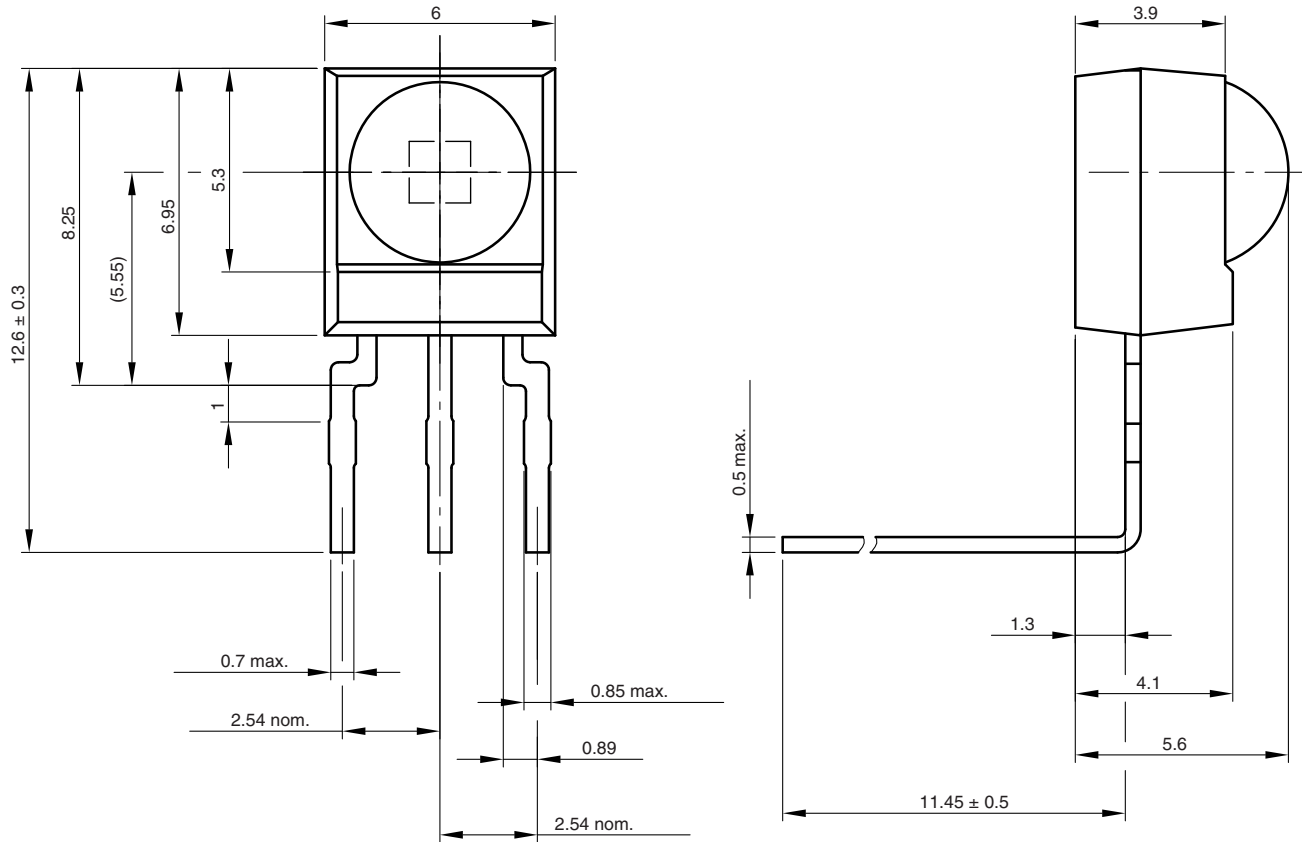
[Packages](#)

[Holders](#)

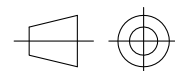
[Bends and Cuts](#)

NAME	LENS AXIS (X)	VIEW	TYPE	HEIGHT (H)	WIDTH (W)	DEPTH (D)
SA1	9.9	-	Bend	11.45	6	12.6

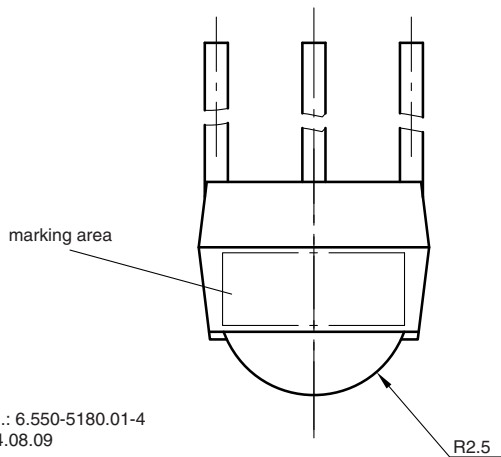
**MECHANICAL DIMENSIONS** in millimeters



Not indicated tolerances ± 0.2

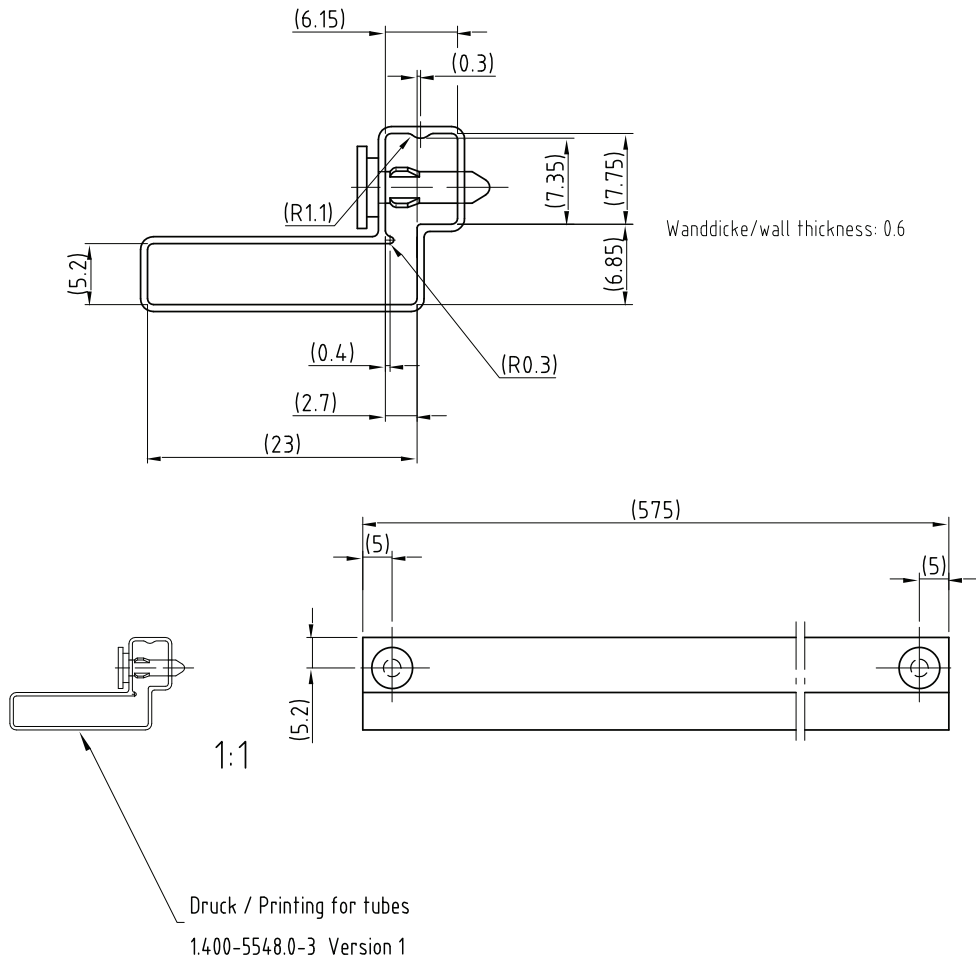


technical drawings according to DIN specifications



Drawing-No.: 6.550-5180.01-4  
Issue: 4; 04.08.09  
16075

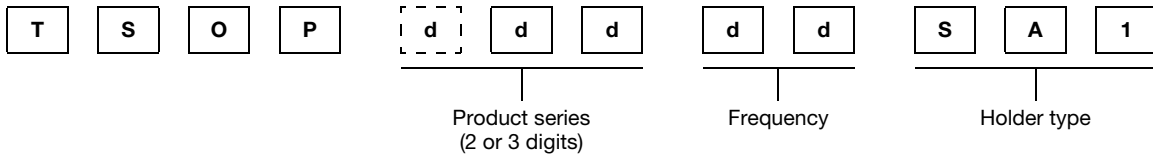
**PACKAGING DIMENSIONS** in millimeters



Drawing-No.: 9.700-5213.0-4  
Rev. 6; Date: 20.11.03

20262-1

**ORDERING INFORMATION**



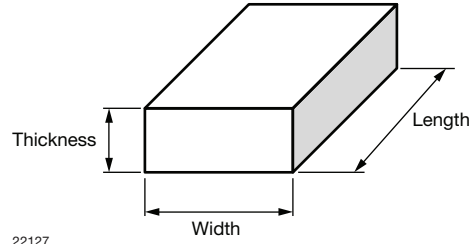
**Note**

- d = "digit", please consult the list of available series on the previous page to create a valid part number

**Example: TSOP14438SA1**

**PACKAGING QUANTITY**

- 90 pieces per tube
- 24 tubes per carton

**OUTER PACKAGING**
**CARTON BOX DIMENSIONS** in millimeters


KINDS OF CARTON BOX	THICKNESS	WIDTH	LENGTH
Packaging plastic tubes (normal / auxiliary devices)	80	150	600
Packaging plastic trays (devices with metal holders)	120	290	490
Tape and reel box (taping in reels)	400	310	410
Ammo-box (zigzag taping)	50	130	350