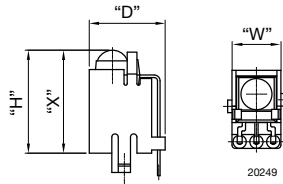
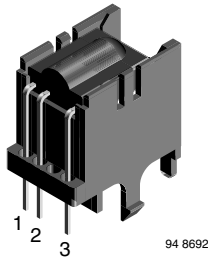


Top View Holder: D = 20 mm, H = 20 mm, W = 12.5 mm, X = 20 mm



FEATURES

- Material categorization: for definitions of compliance please see www.vishay.com/doc?99912

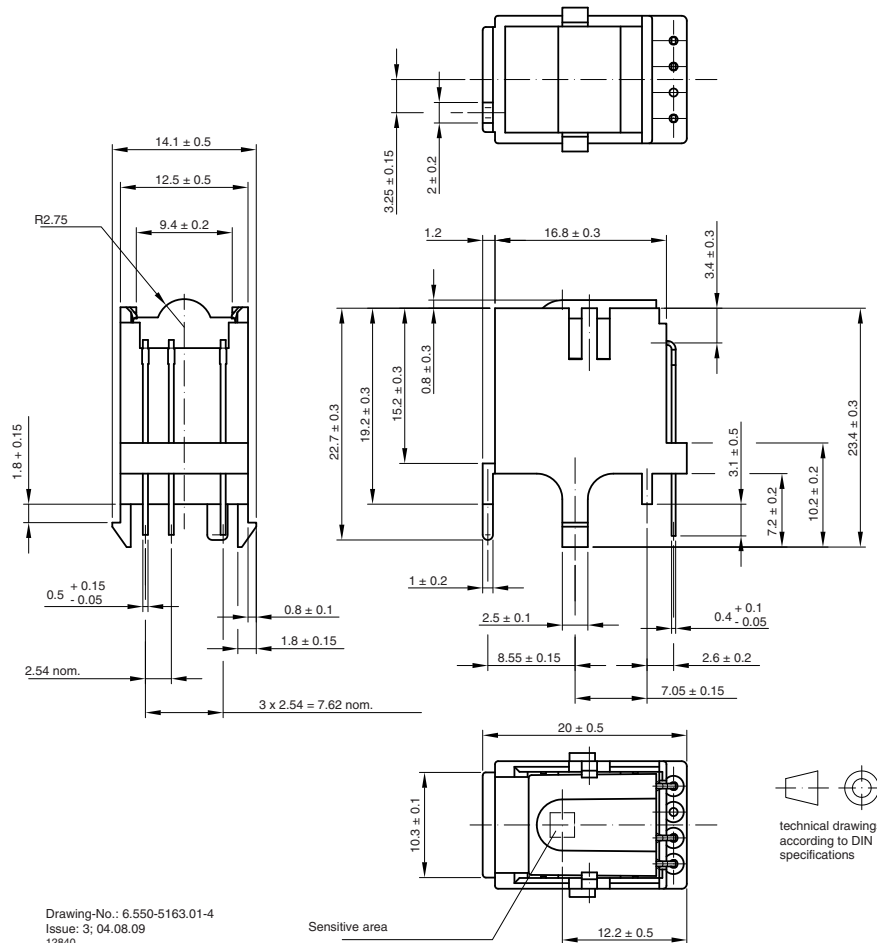
AVAILABLE FOR

- Cast

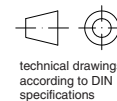


NAME	LENS AXIS (X)	VIEW	TYPE	HEIGHT (H)	WIDTH (W)	DEPTH (D)
GL1	20	Top	Holder	20	12.5	20

MECHANICAL DIMENSIONS in millimeters

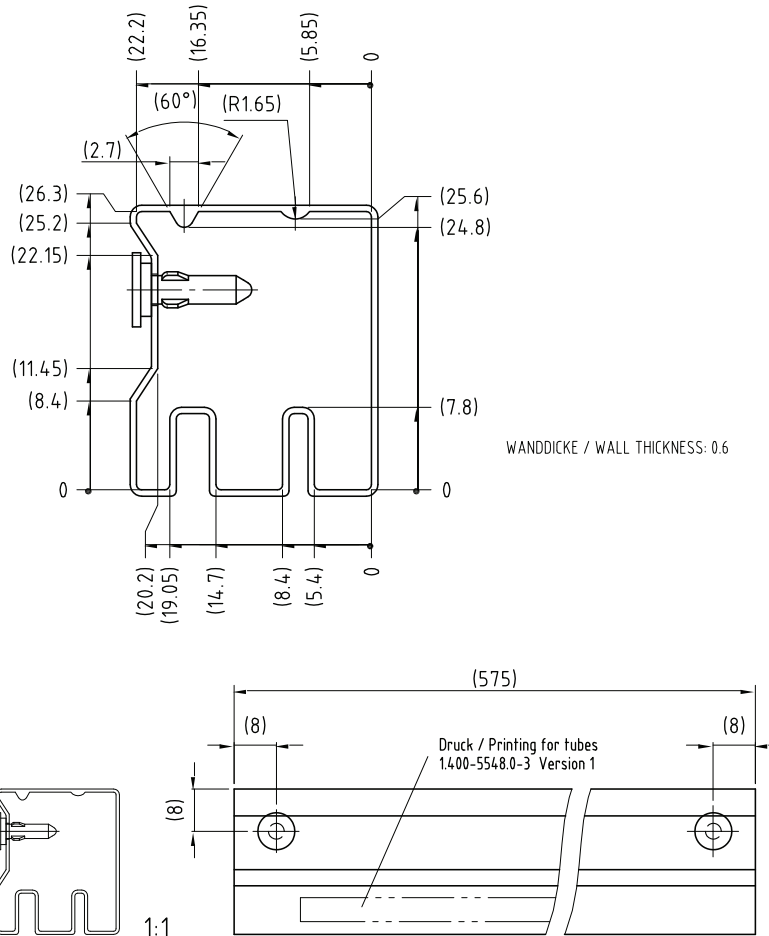


Drawing-No.: 6.550-5163.01-4
Issue: 3; 04.08.09
12840



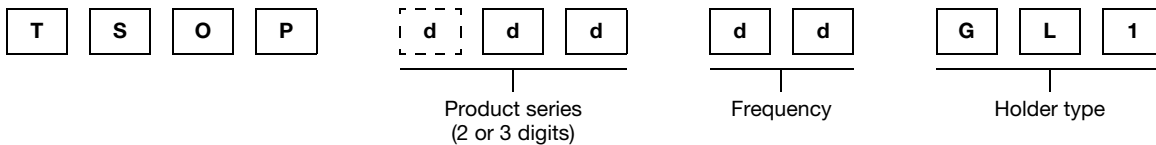
technical drawings according to DIN specifications

PACKAGING DIMENSIONS in millimeters



Drawing-No.: 9.700-5189.0-4
 Rev. 8; Date: 20.11.03
 20313-1

ORDERING INFORMATION



Note

- d = "digit", please consult the list of available series on the previous page to create a valid part number

Example: TSOP31238GL1

PACKING QUANTITY

- 42 pieces per tube
- 18 tubes per carton

Vishay offers plastic and metal holder which have different characteristics:

- *Plastic Pros: nearly invisible behind the bezel*
- *Plastic Cons: cannot be reflow soldered, wave soldering deforms the hooks (visual issue only, the part is secured by the leads after soldering)*
- *Metal Pros: may be reflow and wave soldered, improves EMI and RF rejection*
- *Metal Cons: appears shiny behind the bezel, will oxidize over time (visual issue only, the holder functionality is not impaired)*