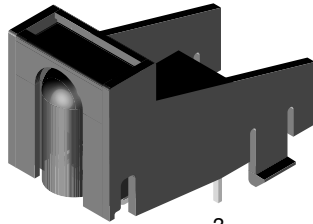
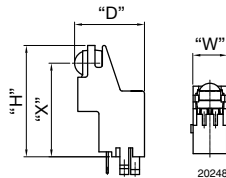


## Side View Holder: D = 25.6 mm, H = 16.05 mm, W = 12.2 mm, X = 12 mm



3

13643



20248

### FEATURES

- Material categorization: for definitions of compliance please see [www.vishay.com/doc?99912](http://www.vishay.com/doc?99912)



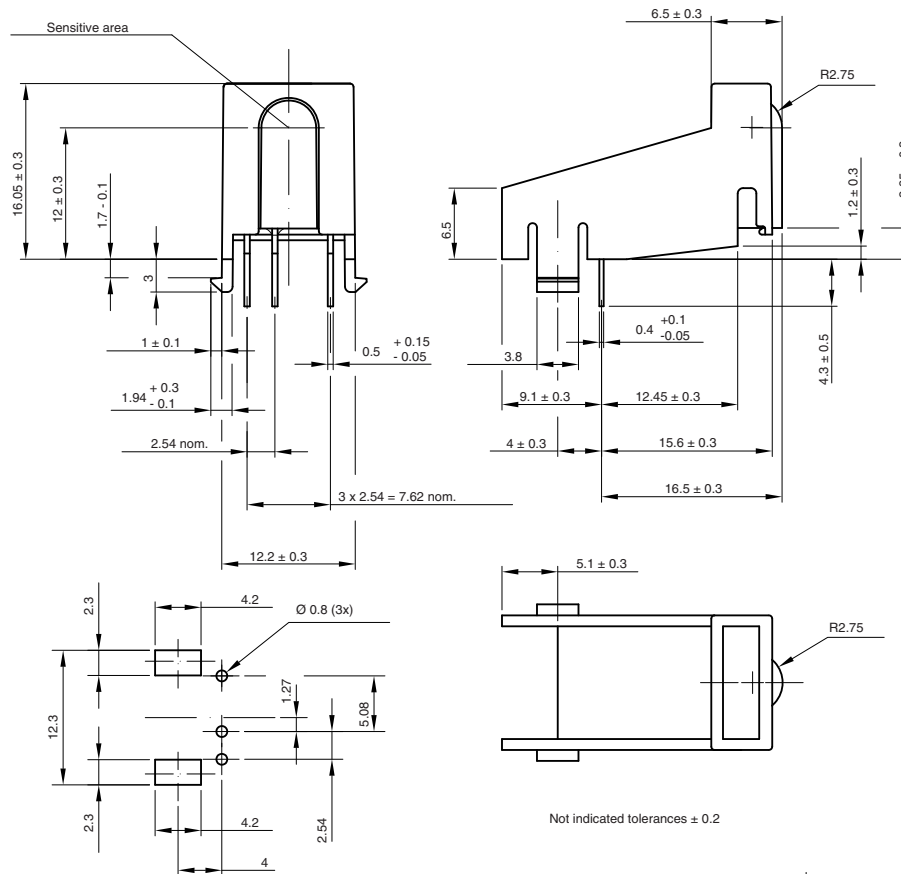
### AVAILABLE FOR

- Cast



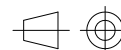
| NAME | LENS AXIS (X) | VIEW | TYPE   | HEIGHT (H) | WIDTH (W) | DEPTH (D) |
|------|---------------|------|--------|------------|-----------|-----------|
| WI1  | 12            | Side | Holder | 16.05      | 12.2      | 25.6      |

### MECHANICAL DIMENSIONS in millimeters



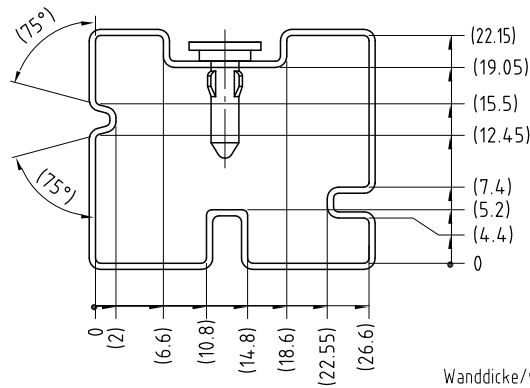
Recommended Vishay installation dimension diagram

Drawing-No.: 6.550-5153.01-4  
Issue: 7; 04.08.09  
12828

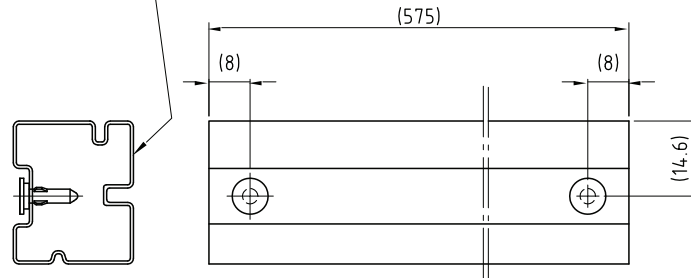


technical drawings according to DIN specifications

**PACKAGING DIMENSIONS** in millimeters



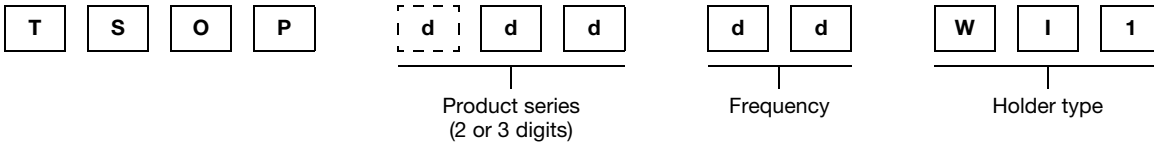
Druck / Printing for tubes  
1400-5548.0-3 Version 1



1:1

Drawing-No.: 9.700-5180.0-4  
Rev. 6; Date: 20.11.03  
20312-1

**ORDERING INFORMATION**



**Note**

- d = "digit", please consult the list of available series on the previous page to create a valid part number

**Example: TSOP31238WI1**

**PACKING QUANTITY**

- 38 pieces per tube
- 15 tubes per carton

Vishay offers plastic and metal holder which have different characteristics:

- *Plastic Pros: nearly invisible behind the bezel*
- *Plastic Cons: cannot be reflow soldered, wave soldering deforms the hooks (visual issue only, the part is secured by the leads after soldering)*
- *Metal Pros: may be reflow and wave soldered, improves EMI and RF rejection*
- *Metal Cons: appears shiny behind the bezel, will oxidize over time (visual issue only, the holder functionality is not impaired)*