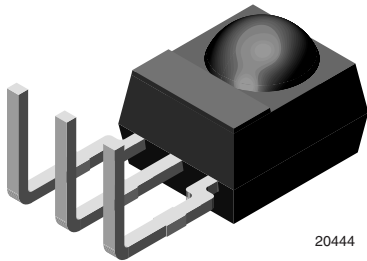


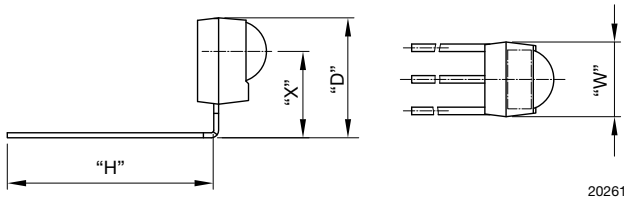
Bent Leads:
D = 12.95 mm, H = 5.2 mm, W = 6 mm, X = 10.25 mm



20444

AVAILABLE FOR

- Mold



20261

LINKS TO ADDITIONAL RESOURCES

[Product Page](#)

[3D Models](#)

[Calculators](#)

[Marking](#)

[Packages](#)

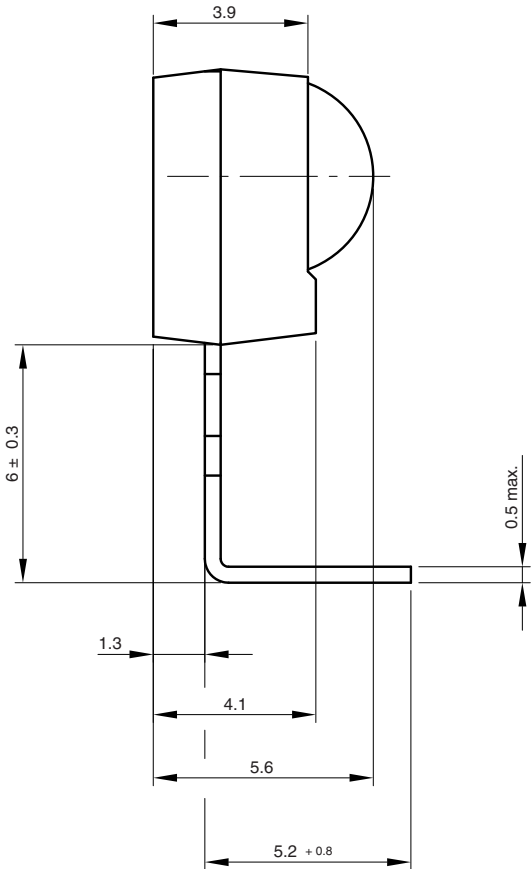
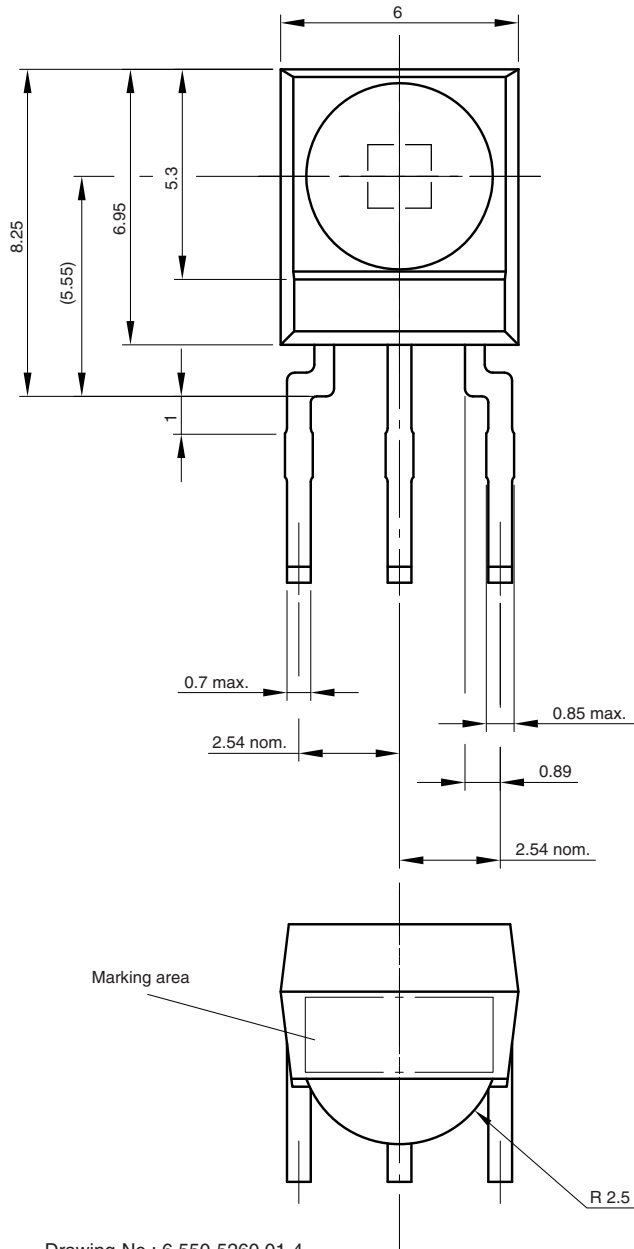
[Holders](#)

[Bends and Cuts](#)

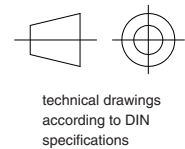
NAME	LENS AXIS (X)	VIEW	TYPE	HEIGHT (H)	WIDTH (W)	DEPTH (D)
SK1	10.25	-	Bend	5.2	6	12.95



MECHANICAL DIMENSIONS in millimeters

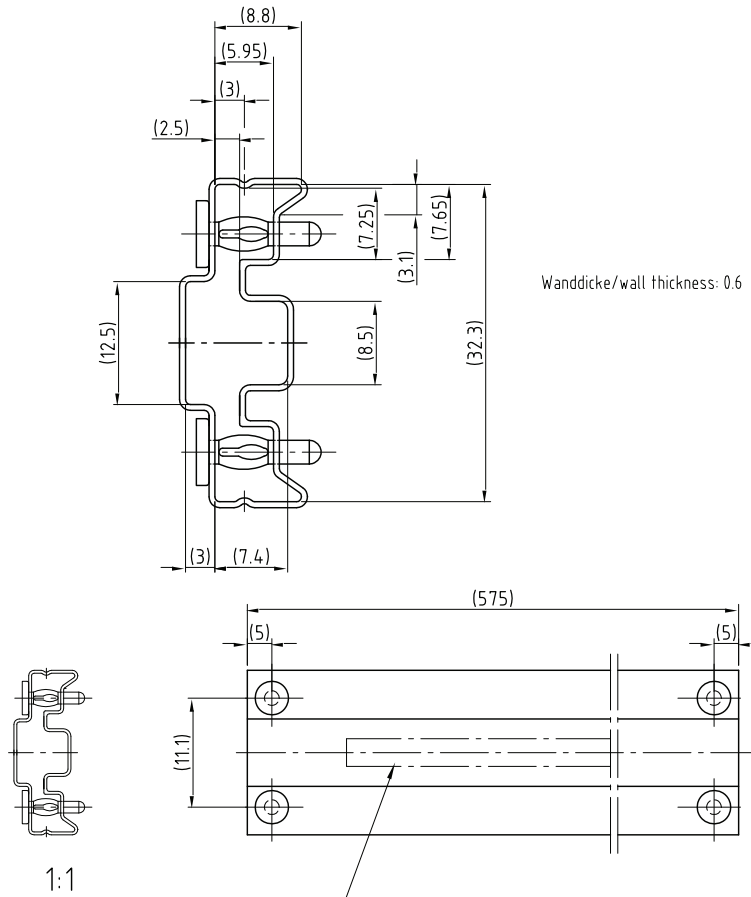


Not indicated tolerances ± 0.2



Drawing-No.: 6.550-5260.01-4
 Issue: 2; 06.03.09
 20435

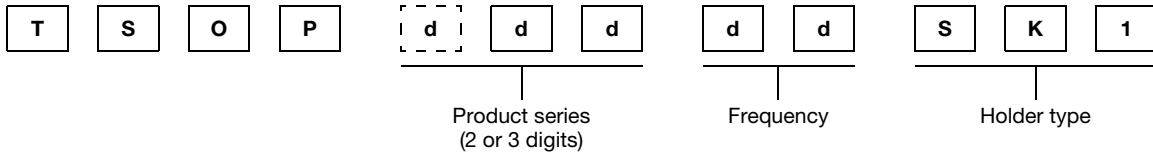
PACKAGING DIMENSIONS in millimeters



Drawing-No.: 9.700-5185.0-4
Rev. 13; Date: 20.11.03
20273-1

Druck / Printing for tubes
1.400-554.8.0-3 Version 1

ORDERING INFORMATION



Note

- d = "digit", please consult the list of available series on the previous page to create a valid part number

Example: TSOP14638SK1

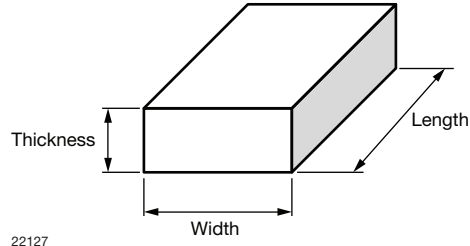
PACKAGING QUANTITY

- 90 pieces per tube
- 24 tubes per carton



OUTER PACKAGING

CARTON BOX DIMENSIONS in millimeters



22127

KINDS OF CARTON BOX	THICKNESS	WIDTH	LENGTH
Packaging plastic tubes (normal / auxiliary devices)	80	150	600
Packaging plastic trays (devices with metal holders)	120	290	490
Tape and reel box (taping in reels)	400	310	410
Ammo-box (zigzag taping)	50	130	350