



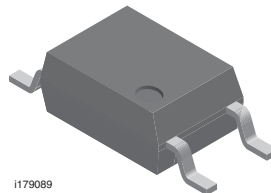
## Footprint and Schematic Information for VOM618A

The footprint and schematic symbols for the following parts can be accessed using the associated links. They are available in Eagle, Altium, KiCad, OrCAD / Allegro, Pulsonix, and PADS.

Note that the 3D models for these parts can be found on the Vishay product page.

PART NUMBER	FOOTPRINT / SCHEMATIC
VOM618A-1T	<a href="http://www.snapeda.com/parts/VOM618A-1T/Vishay/view-part">www.snapeda.com/parts/VOM618A-1T/Vishay/view-part</a>
VOM618A-1X001T	<a href="http://www.snapeda.com/parts/VOM618A-1X001T/Vishay/view-part">www.snapeda.com/parts/VOM618A-1X001T/Vishay/view-part</a>
VOM618A-2T	<a href="http://www.snapeda.com/parts/VOM618A-2T/Vishay/view-part">www.snapeda.com/parts/VOM618A-2T/Vishay/view-part</a>
VOM618A-2X001T	<a href="http://www.snapeda.com/parts/VOM618A-2X001T/Vishay/view-part">www.snapeda.com/parts/VOM618A-2X001T/Vishay/view-part</a>
VOM618A-3T	<a href="http://www.snapeda.com/parts/VOM618A-3T/Vishay/view-part">www.snapeda.com/parts/VOM618A-3T/Vishay/view-part</a>
VOM618A-3X001T	<a href="http://www.snapeda.com/parts/VOM618A-3X001T/Vishay/view-part">www.snapeda.com/parts/VOM618A-3X001T/Vishay/view-part</a>
VOM618A-4T	<a href="http://www.snapeda.com/parts/VOM618A-4T/Vishay/view-part">www.snapeda.com/parts/VOM618A-4T/Vishay/view-part</a>
VOM618A-4X001T	<a href="http://www.snapeda.com/parts/VOM618A-4X001T/Vishay/view-part">www.snapeda.com/parts/VOM618A-4X001T/Vishay/view-part</a>
VOM618A-5T	<a href="http://www.snapeda.com/parts/VOM618A-5T/Vishay/view-part">www.snapeda.com/parts/VOM618A-5T/Vishay/view-part</a>
VOM618A-5X001T	<a href="http://www.snapeda.com/parts/VOM618A-5X001T/Vishay/view-part">www.snapeda.com/parts/VOM618A-5X001T/Vishay/view-part</a>
VOM618A-7T	<a href="http://www.snapeda.com/parts/VOM618A-7T/Vishay/view-part">www.snapeda.com/parts/VOM618A-7T/Vishay/view-part</a>
VOM618A-7X001T	<a href="http://www.snapeda.com/parts/VOM618A-7X001T/Vishay/view-part">www.snapeda.com/parts/VOM618A-7X001T/Vishay/view-part</a>
VOM618A-8T	<a href="http://www.snapeda.com/parts/VOM618A-8T/Vishay/view-part">www.snapeda.com/parts/VOM618A-8T/Vishay/view-part</a>
VOM618A-8X001T	<a href="http://www.snapeda.com/parts/VOM618A-8X001T/Vishay/view-part">www.snapeda.com/parts/VOM618A-8X001T/Vishay/view-part</a>
VOM618AT	<a href="http://www.snapeda.com/parts/VOM618AT/Vishay/view-part">www.snapeda.com/parts/VOM618AT/Vishay/view-part</a>
VOM618AX001T	<a href="http://www.snapeda.com/parts/VOM618AX001T/Vishay/view-part">www.snapeda.com/parts/VOM618AX001T/Vishay/view-part</a>

For technical issues and product support, please contact [optocoupleranswers@vishay.com](mailto:optocoupleranswers@vishay.com).



1179089