

## R-C Thermal Model Parameters

### DESCRIPTION

The parametric values in the R-C thermal model have been derived using curve-fitting techniques. R-C values for the electrical circuit in the Foster/tank and Cauer/filter configurations are included. When implemented in P-SPICE, these values have matching characteristic curves to the single-pulse transient thermal impedance curves for the MOSFET.

These RC values can be used in the P-SPICE simulation to evaluate the thermal behavior of the MOSFET junction temperature under a defined power profile. These techniques are described in application note AN609, "Thermal Simulation of Power MOSFETs on the P-SPICE Platform".

### R-C THERMAL MODEL FOR TANK CONFIGURATION



R-C VALUES FOR TANK CONFIGURATION			
THERMAL RESISTANCE (°C/W)			
Junction to	Ambient	Case	Foot
RT1	N/A	790.0415 m	N/A
RT2	N/A	300.9571 m	N/A
RT3	N/A	498.6908 m	N/A
RT4	N/A	110.3106 m	N/A
THERMAL CAPACITANCE (Joules/°C)			
Junction to	Ambient	Case	Foot
CT1	N/A	27.5575 m	N/A
CT2	N/A	7.4139 m	N/A
CT3	N/A	293.3448 m	N/A
CT4	N/A	979.3290 u	N/A

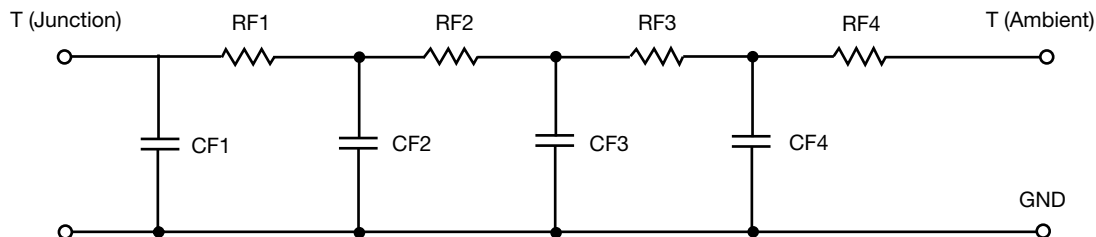
#### Note

N/A indicates not applicable

*This document is intended as a SPICE modeling guideline and does not constitute a commercial product datasheet. Designers should refer to the appropriate datasheet of the same number for guaranteed specification limits.*



## R-C THERMAL MODEL FOR FILTER CONFIGURATION



R-C VALUES FOR FILTER CONFIGURATION			
THERMAL RESISTANCE (°C/W)			
Junction to	Ambient	Case	Foot
RF1	N/A	135.6826 m	N/A
RF2	N/A	500.4181 m	N/A
RF3	N/A	756.8915 m	N/A
RF4	N/A	307.0078 m	N/A
THERMAL CAPACITANCE (Joules/°C)			
Junction to	Ambient	Case	Foot
CF1	N/A	786.9188 u	N/A
CF2	N/A	5.6320 m	N/A
CF3	N/A	26.4793 m	N/A
CF4	N/A	517.4788 m	N/A

**Note**

N/A indicates not applicable

