



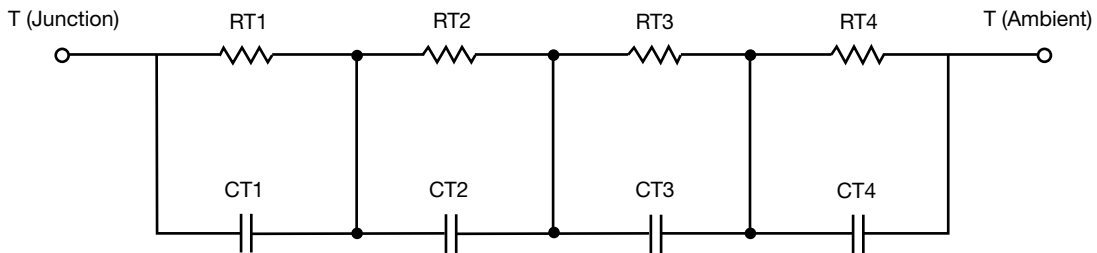
### R-C Thermal Model Parameters

#### DESCRIPTION

The parametric values in the R-C thermal model have been derived using curve-fitting techniques. R-C values for the electrical circuit in the Foster/tank and Cauer/filter configurations are included. When implemented in P-SPICE, these values have matching characteristic curves to the single-pulse transient thermal impedance curves for the MOSFET.

These RC values can be used in the P-SPICE simulation to evaluate the thermal behavior of the MOSFET junction temperature under a defined power profile. These techniques are described in application note AN609, "Thermal Simulation of Power MOSFETs on the P-SPICE Platform".

#### R-C THERMAL MODEL FOR TANK CONFIGURATION



R-C VALUES FOR TANK CONFIGURATION			
THERMAL RESISTANCE (°C/W)			
Junction to	Ambient	Case	Foot
RT1	N/A	1.7993	N/A
RT2	N/A	1.5092	N/A
RT3	N/A	876.8244m	N/A
RT4	N/A	794.0623m	N/A
THERMAL CAPACITANCE (Joules/°C)			
Junction to	Ambient	Case	Foot
CT1	N/A	20.8634m	N/A
CT2	N/A	7.1502m	N/A
CT3	N/A	136.5017m	N/A
CT4	N/A	905.3392u	N/A

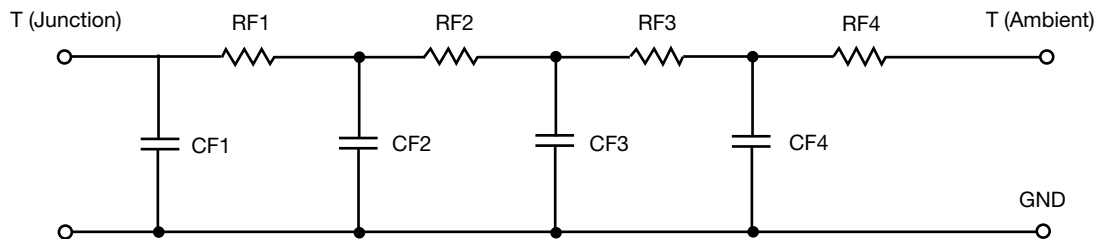
**Note**

N/A indicates not applicable

This document is intended as a SPICE modeling guideline and does not constitute a commercial product datasheet. Designers should refer to the appropriate datasheet of the same number for guaranteed specification limits.



**R-C THERMAL MODEL FOR FILTER CONFIGURATION**



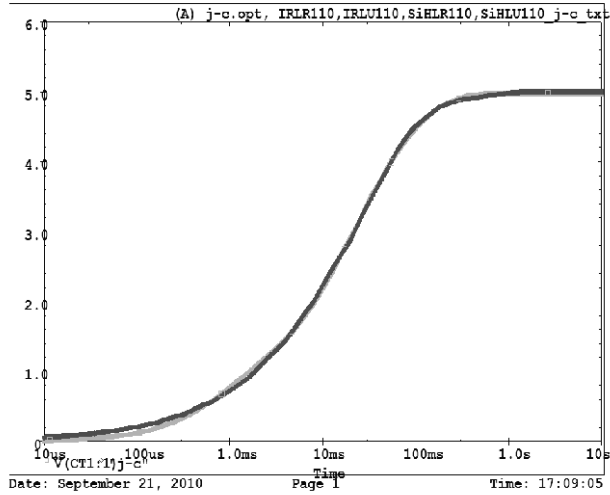
<b>R-C VALUES FOR FILTER CONFIGURATION</b>			
<b>THERMAL RESISTANCE (°C/W)</b>			
<b>Junction to</b>	<b>Ambient</b>	<b>Case</b>	<b>Foot</b>
RF1	N/A	417.6589m	N/A
RF2	N/A	1.9752	N/A
RF3	N/A	1.7505	N/A
RF4	N/A	837.3126m	N/A
<b>THERMAL CAPACITANCE (Joules/°C)</b>			
<b>Junction to</b>	<b>Ambient</b>	<b>Case</b>	<b>Foot</b>
CF1	N/A	292.3884u	N/A
CF2	N/A	2.3651m	N/A
CF3	N/A	10.3466m	N/A
CF4	N/A	84.3085m	N/A

**Note**

N/A indicates not applicable



IRLR110,IRLU110,SiHLR110,SiHLU110 Tank j-c Temperature: 27.0



IRLR110,IRLU110,SiHLR110,SiHLU110 Filter j-c Temperature: 27.0

