

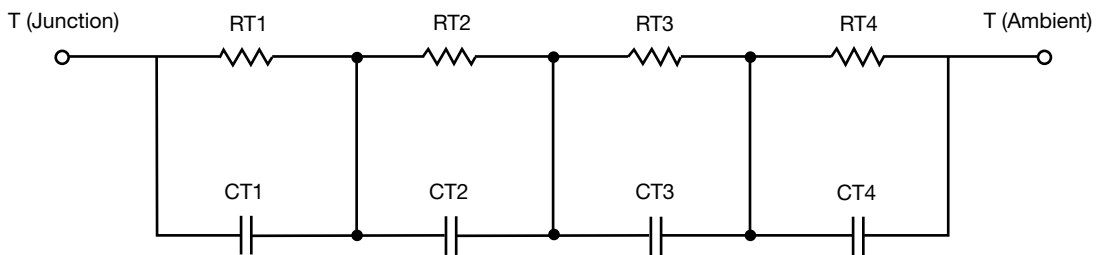
R-C Thermal Model Parameters

DESCRIPTION

The parametric values in the R-C thermal model have been derived using curve-fitting techniques. R-C values for the electrical circuit in the Foster/tank and Cauer/filter configurations are included. When implemented in P-SPICE, these values have matching characteristic curves to the single-pulse transient thermal impedance curves for the MOSFET.

These RC values can be used in the P-SPICE simulation to evaluate the thermal behavior of the MOSFET junction temperature under a defined power profile. These techniques are described in application note AN609, "Thermal Simulation of Power MOSFETs on the P-SPICE Platform".

R-C THERMAL MODEL FOR TANK CONFIGURATION



R-C VALUES FOR TANK CONFIGURATION			
THERMAL RESISTANCE (°C/W)			
Junction to	Ambient	Case	Foot
RT1	N/A	359.3693m	N/A
RT2	N/A	149.0511m	N/A
RT3	N/A	831.8763m	N/A
RT4	N/A	354.8328m	N/A
THERMAL CAPACITANCE (Joules/°C)			
Junction to	Ambient	Case	Foot
CT1	N/A	933.9856m	N/A
CT2	N/A	1.7761m	N/A
CT3	N/A	49.7580m	N/A
CT4	N/A	15.7115m	N/A

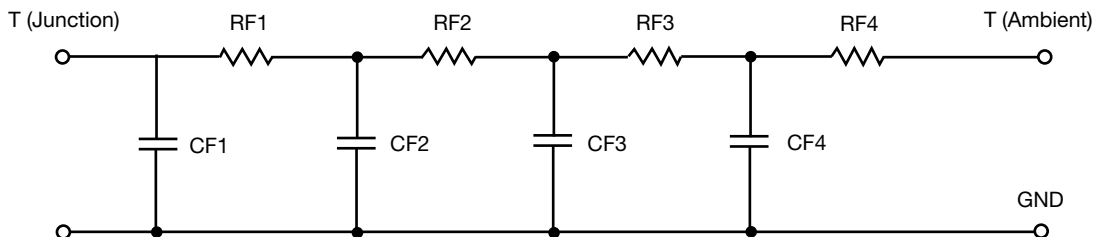
Note

N/A indicates not applicable

This document is intended as a SPICE modeling guideline and does not constitute a commercial product datasheet. Designers should refer to the appropriate datasheet of the same number for guaranteed specification limits.



R-C THERMAL MODEL FOR FILTER CONFIGURATION



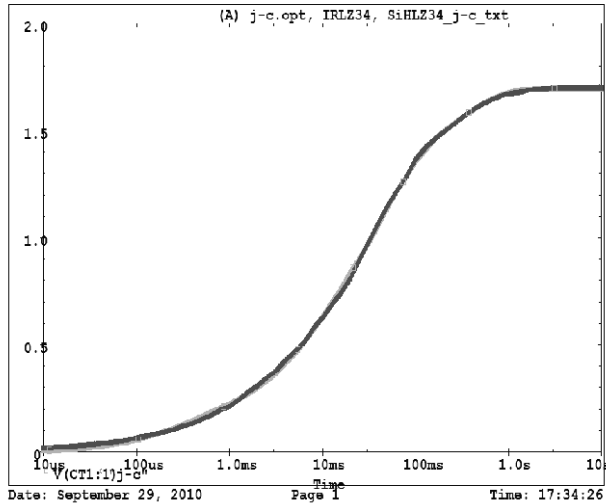
R-C VALUES FOR FILTER CONFIGURATION			
THERMAL RESISTANCE (°C/W)			
Junction to	Ambient	Case	Foot
RF1	N/A	380.5985m	N/A
RF2	N/A	529.2012m	N/A
RF3	N/A	390.8061m	N/A
RF4	N/A	391.1186m	N/A
THERMAL CAPACITANCE (Joules/°C)			
Junction to	Ambient	Case	Foot
CF1	N/A	2.8087m	N/A
CF2	N/A	27.5497m	N/A
CF3	N/A	603.5344u	N/A
CF4	N/A	538.7429m	N/A

Note

N/A indicates not applicable



IRLZ34, SiHLZ34 Tank j-c Temperature: 27.0



IRLZ34, SiHLZ34 Filter j-c Temperature: 27.0

