

R-C Thermal Model Parameters

DESCRIPTION

The parametric values in the R-C thermal model have been derived using curve-fitting techniques. R-C values for the electrical circuit in the Foster/tank and Cauer/filter configurations are included. When implemented in P-SPICE, these values have matching characteristic curves to the single-pulse transient thermal impedance curves for the MOSFET.

These RC values can be used in the P-SPICE simulation to evaluate the thermal behavior of the MOSFET junction temperature under a defined power profile. These techniques are described in application note AN609, "Thermal Simulation of Power MOSFETs on the P-SPICE Platform".

R-C THERMAL MODEL FOR TANK CONFIGURATION



R-C VALUES FOR TANK CONFIGURATION			
THERMAL RESISTANCE (°C/W)			
Junction to	Ambient	Case	Foot
RT1	N/A	353.9838m	N/A
RT2	N/A	543.6918m	N/A
RT3	N/A	212.4005m	N/A
RT4	N/A	1.3848	N/A
THERMAL CAPACITANCE (Joules/°C)			
Junction to	Ambient	Case	Foot
CT1	N/A	2.0314m	N/A
CT2	N/A	31.2242m	N/A
CT3	N/A	30.0563m	N/A
CT4	N/A	44.8374m	N/A

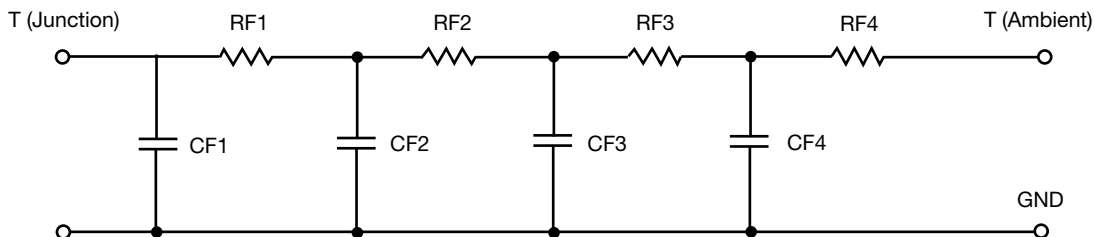
Note

N/A indicates not applicable

This document is intended as a SPICE modeling guideline and does not constitute a commercial product datasheet. Designers should refer to the appropriate datasheet of the same number for guaranteed specification limits.



R-C THERMAL MODEL FOR FILTER CONFIGURATION



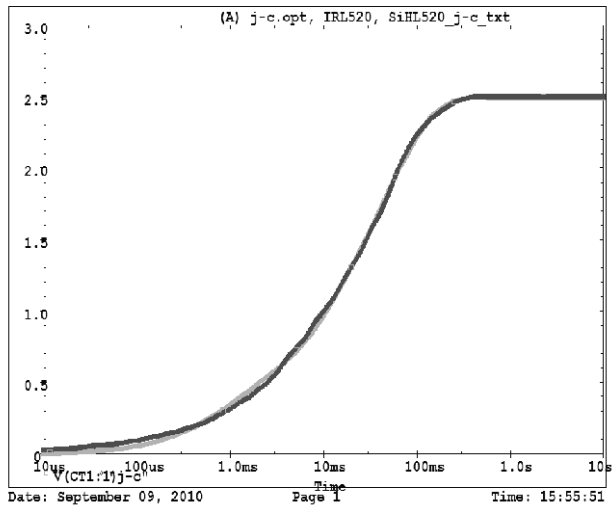
R-C VALUES FOR FILTER CONFIGURATION			
THERMAL RESISTANCE (°C/W)			
Junction to	Ambient	Case	Foot
RF1	N/A	727.5688m	N/A
RF2	N/A	1.5445	N/A
RF3	N/A	193.0716m	N/A
RF4	N/A	32.9201m	N/A
THERMAL CAPACITANCE (Joules/°C)			
Junction to	Ambient	Case	Foot
CF1	N/A	2.5574m	N/A
CF2	N/A	20.5597m	N/A
CF3	N/A	389.0464m	N/A
CF4	N/A	5.2863m	N/A

Note

N/A indicates not applicable



IRL520, SiHL520 Tank j-c Temperature: 27.0



IRL520, SiHL520 Filter j-c Temperature: 27.0

