

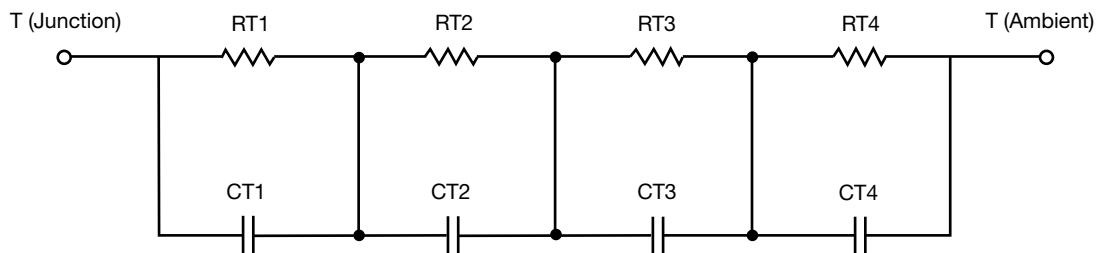
R-C Thermal Model Parameters

DESCRIPTION

The parametric values in the R-C thermal model have been derived using curve-fitting techniques. R-C values for the electrical circuit in the Foster/tank and Cauer/filter configurations are included. When implemented in P-SPICE, these values have matching characteristic curves to the single-pulse transient thermal impedance curves for the MOSFET.

These RC values can be used in the P-SPICE simulation to evaluate the thermal behavior of the MOSFET junction temperature under a defined power profile. These techniques are described in application note AN609, "Thermal Simulation of Power MOSFETs on the P-SPICE Platform".

R-C THERMAL MODEL FOR TANK CONFIGURATION



R-C VALUES FOR TANK CONFIGURATION			
THERMAL RESISTANCE (°C/W)			
Junction to	Ambient	Case	Foot
RT1	24.6847	N/A	N/A
RT2	22.5828	N/A	N/A
RT3	9.4347	N/A	N/A
RT4	62.9909	N/A	N/A
THERMAL CAPACITANCE (Joules/°C)			
Junction to	Ambient	Case	Foot
CT1	289.5019m	N/A	N/A
CT2	60.9912m	N/A	N/A
CT3	5.5447m	N/A	N/A
CT4	721.3359m	N/A	N/A

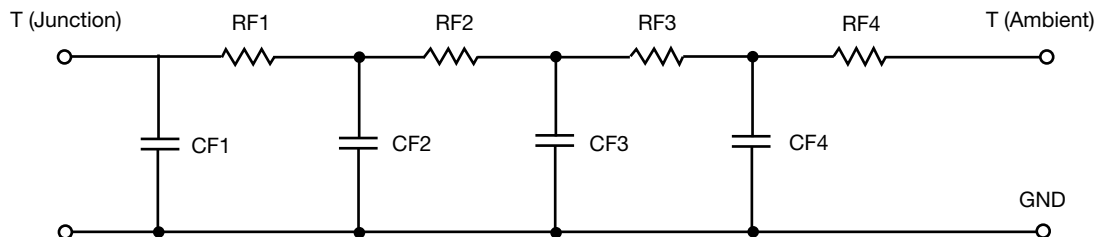
Note

N/A indicates not applicable

This document is intended as a SPICE modeling guideline and does not constitute a commercial product datasheet. Designers should refer to the appropriate datasheet of the same number for guaranteed specification limits.



R-C THERMAL MODEL FOR FILTER CONFIGURATION



R-C VALUES FOR FILTER CONFIGURATION			
THERMAL RESISTANCE (°C/W)			
Junction to	Ambient	Case	Foot
RF1	4.9363	N/A	N/A
RF2	13.4187	N/A	N/A
RF3	46.9558	N/A	N/A
RF4	54.4174	N/A	N/A
THERMAL CAPACITANCE (Joules/°C)			
Junction to	Ambient	Case	Foot
CF1	5.5568m	N/A	N/A
CF2	4.2847m	N/A	N/A
CF3	79.0564m	N/A	N/A
CF4	711.3390m	N/A	N/A

Note

N/A indicates not applicable

