



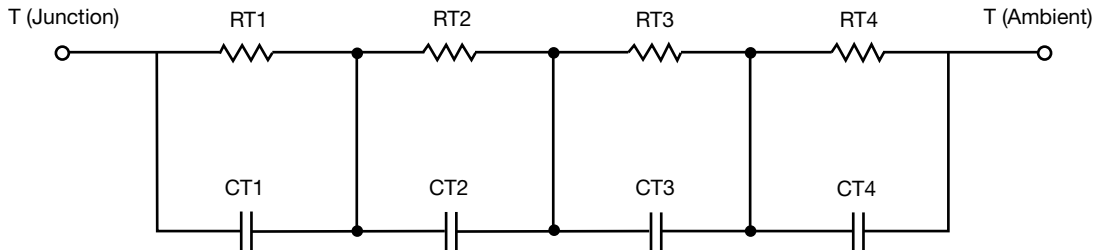
R-C Thermal Model Parameters

DESCRIPTION

The parametric values in the R-C thermal model have been derived using curve-fitting techniques. R-C values for the electrical circuit in the Foster/tank and Cauer/filter configurations are included. When implemented in P-SPICE, these values have matching characteristic curves to the single-pulse transient thermal impedance curves for the MOSFET.

These RC values can be used in the P-SPICE simulation to evaluate the thermal behavior of the MOSFET junction temperature under a defined power profile. These techniques are described in application note AN609, "Thermal Simulation of Power MOSFETs on the P-SPICE Platform".

R-C THERMAL MODEL FOR TANK CONFIGURATION



| R-C VALUES FOR TANK CONFIGURATION | | | |
|-----------------------------------|---------|-----------|------|
| THERMAL RESISTANCE (°C/W) | | | |
| Junction to | Ambient | Case | Foot |
| RT1 | N/A | 241.4165m | N/A |
| RT2 | N/A | 305.3967m | N/A |
| RT3 | N/A | 2.9292 | N/A |
| RT4 | N/A | 523.9868m | N/A |
| THERMAL CAPACITANCE (Joules/°C) | | | |
| Junction to | Ambient | Case | Foot |
| CT1 | N/A | 2.7875m | N/A |
| CT2 | N/A | 75.3129m | N/A |
| CT3 | N/A | 447.5456m | N/A |
| CT4 | N/A | 5.6503m | N/A |

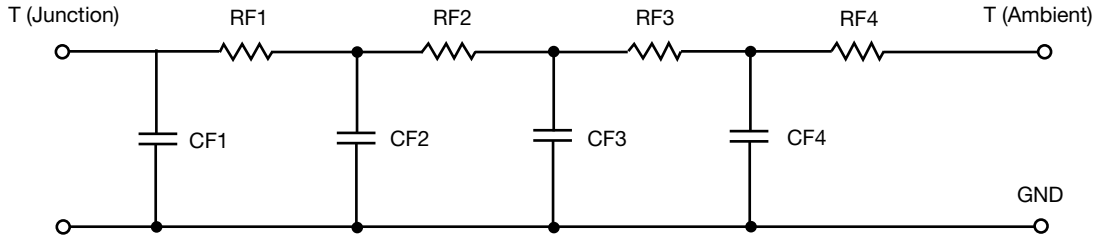
Note

- n/a indicates not applicable

This document is intended as a SPICE modeling guideline and does not constitute a commercial product datasheet. Designers should refer to the appropriate datasheet of the same number for guaranteed specification limits.



R-C THERMAL MODEL FOR FILTER CONFIGURATION



| R-C VALUES FOR FILTER CONFIGURATION | | | |
|-------------------------------------|---------|-----------|------|
| THERMAL RESISTANCE (°C/W) | | | |
| Junction to | Ambient | Case | Foot |
| RF1 | N/A | 778.3955m | N/A |
| RF2 | N/A | 421.0045m | N/A |
| RF3 | N/A | 1.5741 | N/A |
| RF4 | N/A | 1.2265 | N/A |
| THERMAL CAPACITANCE (Joules/°C) | | | |
| Junction to | Ambient | Case | Foot |
| CF1 | N/A | 2.1988m | N/A |
| CF2 | N/A | 56.1516m | N/A |
| CF3 | N/A | 369.8909m | N/A |
| CF4 | N/A | 243.6504m | N/A |

Note

- n/a indicates not applicable

