

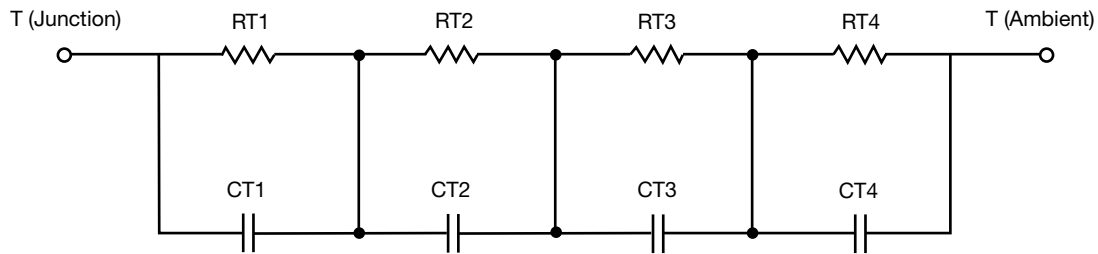
## R-C Thermal Model Parameters

### DESCRIPTION

The parametric values in the R-C thermal model have been derived using curve-fitting techniques. R-C values for the electrical circuit in the Foster/tank and Cauer/filter configurations are included. When implemented in PSpice, these values have matching characteristic curves to the single-pulse transient thermal impedance curves for the MOSFET.

These RC values can be used in the PSpice simulation to evaluate the thermal behavior of the MOSFET junction temperature under a defined power profile. These techniques are described in application note AN609, "Thermal Simulation of Power MOSFETs on the PSpice Platform".

### R-C THERMAL MODEL FOR TANK CONFIGURATION



R-C VALUES FOR TANK CONFIGURATION			
THERMAL RESISTANCE (°C/W)			
Junction to	Ambient	Case	Foot
RT1	n/a	119.8198m	n/a
RT2	n/a	345.7087m	n/a
RT3	n/a	3.0607	n/a
RT4	n/a	95.8413m	n/a
THERMAL CAPACITANCE (Joules/°C)			
Junction to	Ambient	Case	Foot
CT1	n/a	6.0163m	n/a
CT2	n/a	1.9938m	n/a
CT3	n/a	13.1648m	n/a
CT4	n/a	10.6191m	n/a

#### Note

- n/a indicates not applicable

This document is intended as a SPICE modeling guideline and does not constitute a commercial product datasheet. Designers should refer to the appropriate datasheet of the same number for guaranteed specification limits.



R-C THERMAL MODEL FOR FILTER CONFIGURATION



R-C VALUES FOR FILTER CONFIGURATION			
THERMAL RESISTANCE (°C/W)			
Junction to	Ambient	Case	Foot
RF1	n/a	580.4186m	n/a
RF2	n/a	520.8453m	n/a
RF3	n/a	2.3202	n/a
RF4	n/a	180.7020m	n/a
THERMAL CAPACITANCE (Joules/°C)			
Junction to	Ambient	Case	Foot
CF1	n/a	1.1183m	n/a
CF2	n/a	7.0497m	n/a
CF3	n/a	6.1054m	n/a
CF4	n/a	2.4858m	n/a

Note

- n/a indicates not applicable

