

**POTENTIOMETER**

Model 357

**7/8" (22.2 mm) Conductive Plastic, Single Turn,
Bushing Mount Type Potentiometer****KEY BENEFITS**

- Customized options including special electrical angles, mechanical packaging and custom functions
- Very flexible product for existing users and design-in
- Product can be offered with add-ons, such as cables to simplify fitting
- Complete solution reduces OEMs' supplier bases

APPLICATIONS

- Medical, marine, industrial applications for angular position sensing

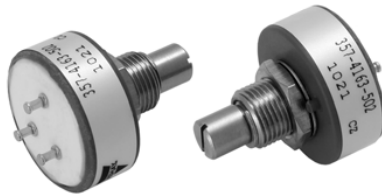
RESOURCES

- Datasheet: Model 357 - <http://www.vishay.com/doc?57059>
- For technical questions contact sfer@vishay.com

Resistors - Cost Effective Solution



7/8" (22.2 mm) Conductive Plastic, Single Turn, Bushing Mount Type Potentiometer


FEATURES

- 7/8" diameter single turn
- Compact size, advanced design technology
- Offer a cost effective solution to your potentiometer requirements
- Suitable model for all industrial applications
- Compliant to RoHS Directive 2011/65/EU


RoHS
COMPLIANT

ELECTRICAL SPECIFICATIONS		
PARAMETER		
Resistance	Standard range, 1 k Ω to 50 k Ω	
Tolerance	STANDARD $\pm 20\%$	SPECIAL TO $\pm 10\%$
Linearity (Independent)	STANDARD $\pm 2.0\%$	SPECIAL $\pm 1.0\%$
Output Smoothness	0.1 % maximum	
TCR	± 600 ppm/ $^{\circ}$ C maximum	
Power Rating	1.0 W at 70 $^{\circ}$ C derated to 0 W at 125 $^{\circ}$ C	
Electrical Travel	340 $^{\circ}$ \pm 3 $^{\circ}$	
End Voltage	0.5 % maximum	
Dielectric Withstanding Voltage	1000 V _{RMS} , 60 Hz	
Insulation Resistance	1000 M Ω , 500 V _{DC}	

MECHANICAL SPECIFICATIONS		
PARAMETER		
Rotation	360 $^{\circ}$ continuous (optional mechanical stops 340 $^{\circ}$ \pm 3 $^{\circ}$)	
Mounting	3/8 - 32 UNEF - 2A	
Operating Torque Maximum	Starting and running 3.68 mNm (0.5 oz. - in)	
Shaft Tolerance Maximum		
Runout	0.13 mm (0.005")	
End Play	0.25 mm (0.010")	
Radial Play	0.13 mm (0.005")	
Weight	17.5 g (0.62 oz.)	

ORDERING INFORMATION/DESCRIPTION								
357	B	0	10K	20 %	A	BO50	0 P 22	e4
MODEL	STYLE	FEATURES	OHMIC VALUE	TOLERANCE ON OHMIC VALUE	LINEARITY	PACKAGING	SHAFT TYPE	LEAD
	Bushing	0 Non turn pin and continuous rotation				Box of 50 pieces	Shaft diameter 0 = 6.0 mm or 1 = 6.35 mm (1/4")	Finish
		1 No non turn pin and continuous rotation	From 1K to 50 K	$\pm 10\%$ or $\pm 20\%$	X: $\pm 2\%$ A: $\pm 1\%$		Shaft type P = Plain S = Slotted FMF (from Mounting face)	
		2 Non turn pin, with stops on rotation					Range from 12 mm to 75 mm in 1 mm increments	
		3 No non turn pin with stops on rotation						

Revision 24-Feb-11

SAP PART NUMBERING GUIDELINES						
357B	2	203	M	X	B25	1S22
MODEL	FEATURES	OHMIC VALUE	TOLERANCE ON OHMIC VALUE	LINEARITY	PACKAGING	SHAFT TYPE
		203 = 20K	M: $\pm 20\%$ /K: $\pm 10\%$	X: $\pm 2\%$	Box of 50 pieces	

Resistors - Cost Effective Solution