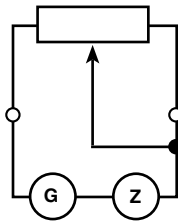


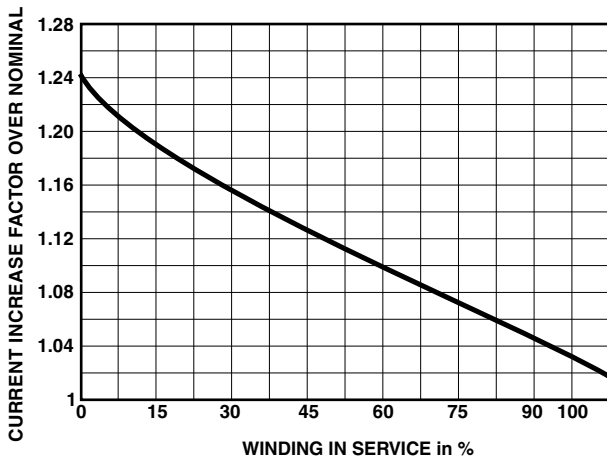
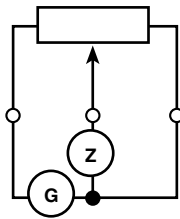


Wirewound Rheostats and Potentiometers Characteristics

RHEOSTAT MODE



POTENTIOMETER MODE



FEATURES

- 12 W to 500 W at 25 °C
- CCTU 05-03B
- Material categorization:
For definitions of compliance please see www.vishay.com/doc?99912



The performance of RT-RTE rheostats exceeds the requirements of specification CCTU 05-03B. They have been designed for heavy duty applications such as repeated overloads, transients, shock and vibration conditions.

RT VITREOUS SERIES

Six sizes are available capable of dissipating 12 W, 25 W, 55 W, 100 W, 250 W or 500 W at 25 °C.

The resistive wire is protected by a proprietary Vishay Sfernice enamel fired at high temperature and free from any compound that could cause corrosion of the wire.

The maximum operating temperature of the RT series is 320 °C.

GANGED UNITS

Ganged units are available with different combinations of power and ohmic values (see datasheet).

GRADED WINDINGS

These are recommended when the ratio is $\frac{I_{max.}}{I_{min.}} > 2$

MAXIMUM OVERLOAD

In rheostat use, the winding current decreases in relation to the number of turns being used.

When part of the winding is used the current can be increased in accordance with the graph on the left.

Substantially heavier overloads can be applied in short impulses and we would be pleased to advise on this type of application, on receipt of the following information:

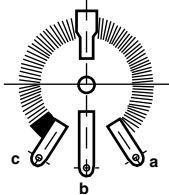
- proposed rheostat usage
- current level
- operating cycles specifying duration of overload "ON", "OFF" periods

APPLICATION NOTE

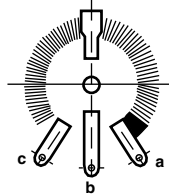
Wirewound Rheostats and Potentiometers Characteristics

SPECIAL FEATURES

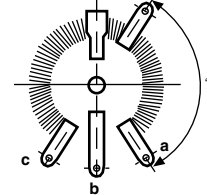
OFF POSITION LEFT
Code No.: 213700



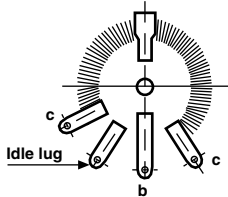
OFF POSITION RIGHT
Code No.: 213600



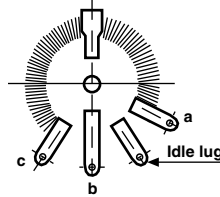
FIXED TAPPINGS, ONE OR MORE
Code No.: RTP
Not available for RT12 and RT500



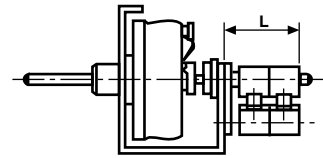
IDLE LUG LEFT
Code No.: DB1
Not available for RT12 and RT500



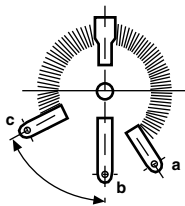
IDLE LUG RIGHT
Code No.: DB2
Not available for RT12 and RT500



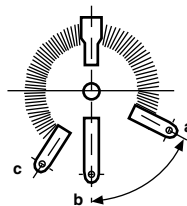
DOUBLE MINI SWITCH
Not available for RT12



REDUCED LEFT TRAVEL
Not available for RT12 and RT500



REDUCED RIGHT TRAVEL
Not available for RT12 and RT500



Other special features are available.

Please consult Vishay Sfernice for all of your rheostat requirements.

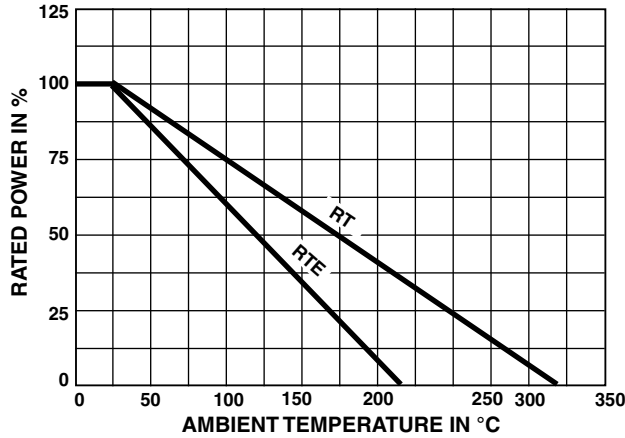
All the positionings are defined when the shaft end is viewed (contrary to the above windings) clockwise detent.

APPLICATION NOTE

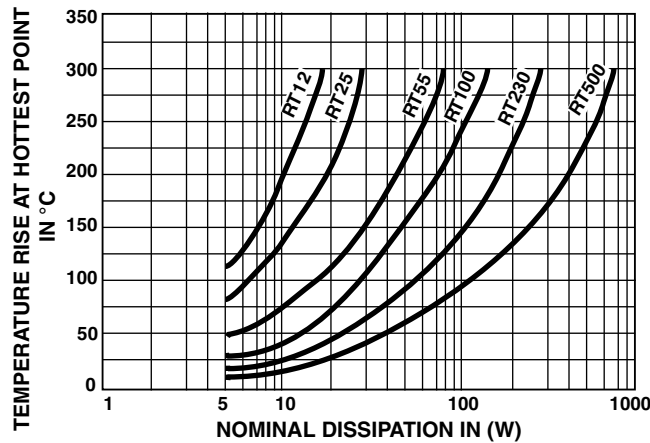
DIMENSIONS in millimeters		
DOUBLE MINI SWITCH FOR SERIES AND SIZE	CODE	L
RT25	219410	29
RT55	219430	33
RT100	219450	33
RT230	219470	35
RT500	219480	35

Wirewound Rheostats and Potentiometers Characteristics

POWER RATING



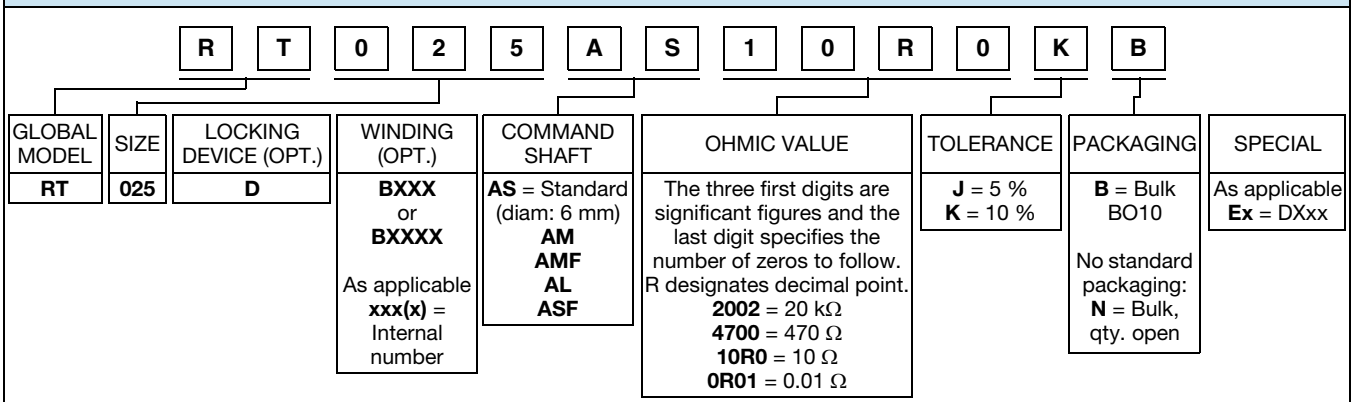
TEMPERATURE RISE



ORDERING INFORMATION

RT	025	ASF	2201	K	B	XXX
MODEL	STYLE	SPINDLE	OHMIC VALUE	TOLERANCE	PACKAGING	SPECIAL DESIGN

GLOBAL PART NUMBER INFORMATION



APPLICATION NOTE