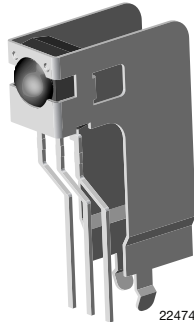
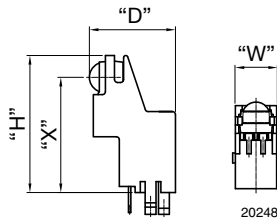


Side View Holder:

D = 16.3 mm, H = 22.45 mm, W = 6.8 mm, X = 19.35 mm



22474



20248

FEATURES

- Material categorization: for definitions of compliance please see www.vishay.com/doc?99912

AVAILABLE FOR

- Mold



RoHS
COMPLIANT
HALOGEN
FREE
GREEN
(5-2008)

LINKS TO ADDITIONAL RESOURCES

[Product Page](#)

[3D Models](#)

[Calculators](#)

[Marking](#)

[Packages](#)

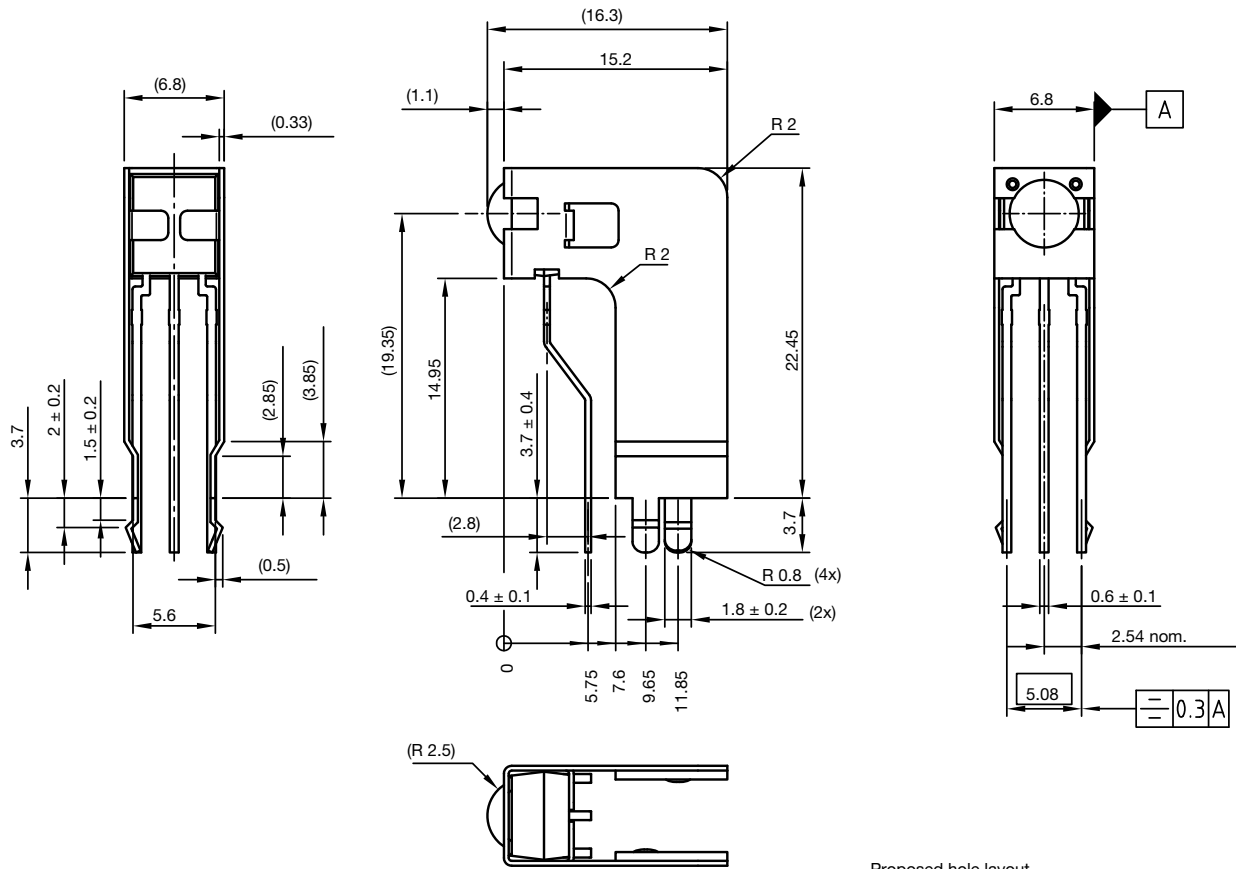
[Holders](#)

[Bends and Cuts](#)

NAME	LENS AXIS (X)	VIEW	TYPE	HEIGHT (H)	WIDTH (W)	DEPTH (D)
CD1	19.35	Side	Holder	22.45	6.8	16.3

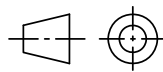


MECHANICAL DIMENSIONS in millimeters



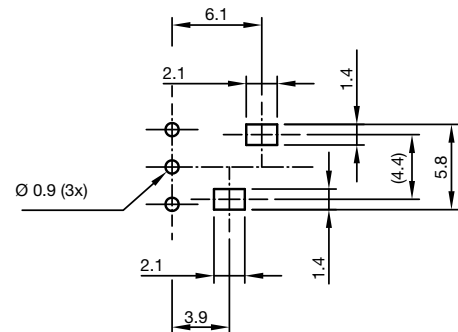
Not indicated tolerances ± 0.3

Proposed hole layout component side (for reference only)

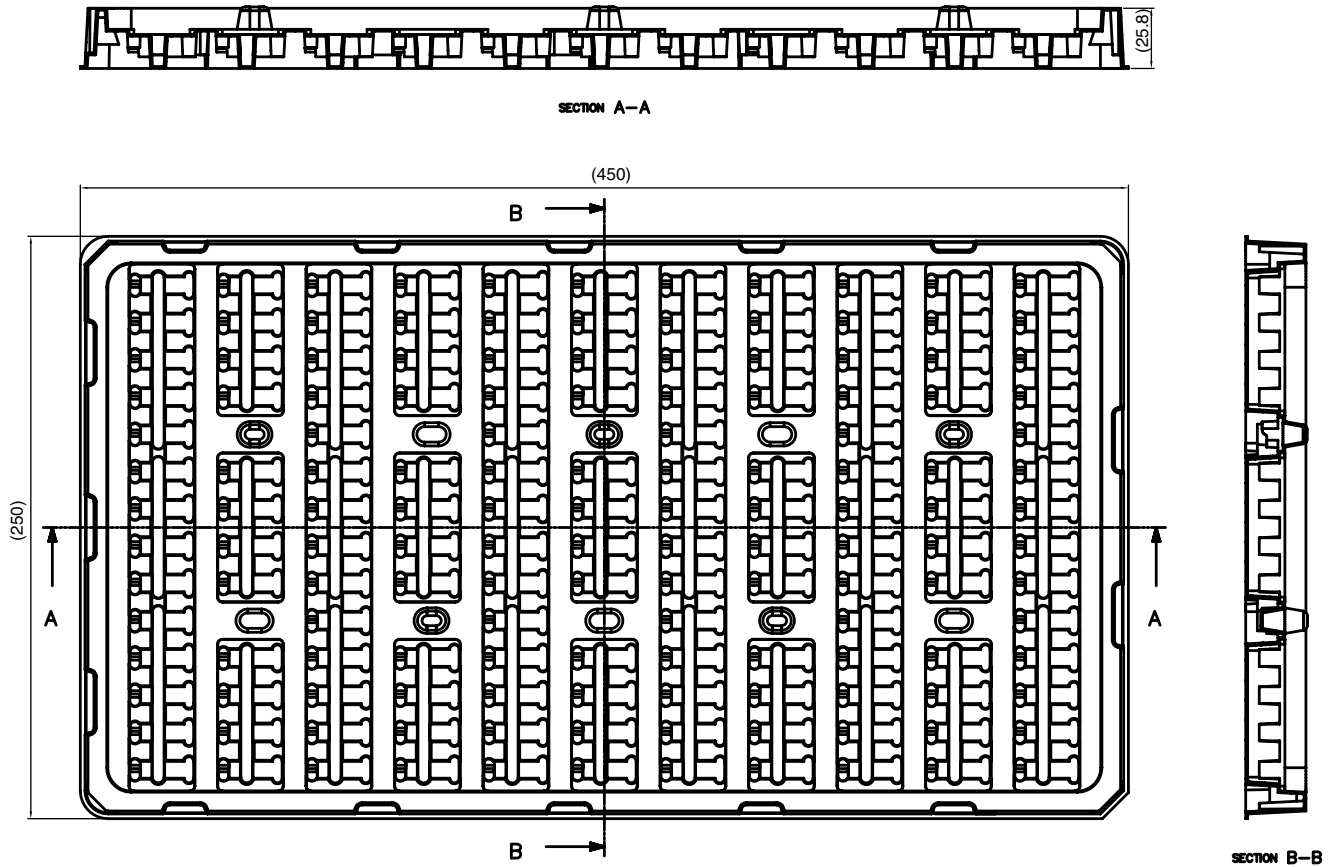


technical drawings according to DIN specifications

Drawing-No.: 6.550-5310.01-4
Issue: 2/17.11.10
22473

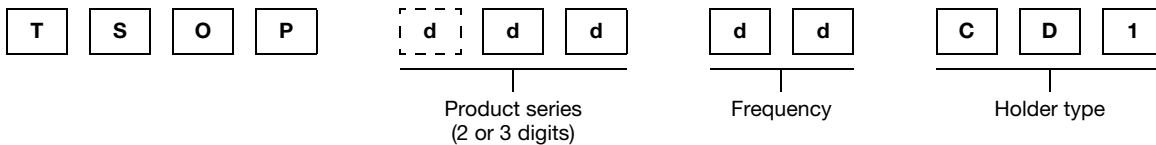


PACKAGING DIMENSIONS in millimeters



Drawing-No.: 9.700-5370.0-1
 Rev: 2; Date: 29.11.10
 22475

ORDERING INFORMATION



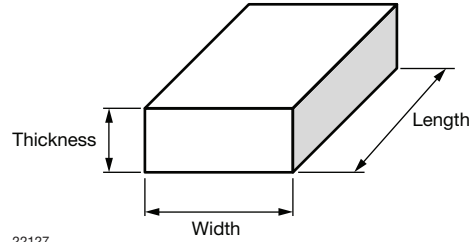
Note

- d = "digit", please consult the list of available series on the previous page to create a valid part number

Example: TSOP32336CD1

PACKING QUANTITY

- 144 pieces per tray
- 4 trays per carton

OUTER PACKAGING
CARTON BOX DIMENSIONS in millimeters


KINDS OF CARTON BOX	THICKNESS	WIDTH	LENGTH
Packaging plastic tubes (normal / auxiliary devices)	80	150	600
Packaging plastic trays (devices with metal holders)	120	290	490
Tape and reel box (taping in reels)	400	310	410
Ammo-box (zigzag taping)	50	130	350

Vishay offers plastic and metal holder which have different characteristics:

- *Plastic Pros: nearly invisible behind the bezel*
- *Plastic Cons: cannot be reflow soldered, wave soldering deforms the hooks (visual issue only, the part is secured by the leads after soldering)*
- *Metal Pros: may be reflow and wave soldered, improves EMI and RF rejection*
- *Metal Cons: appears shiny behind the bezel, will oxidize over time (visual issue only, the holder functionality is not impaired)*