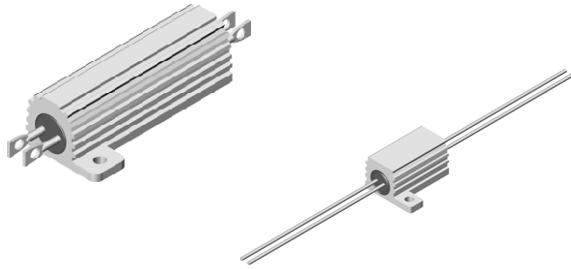




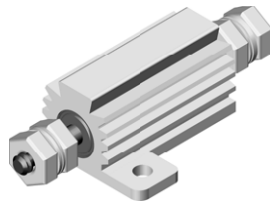
Wirewound Resistors Housed, Terminal Variations



MODELS RH-10, RH-25, RH-50

Four Terminals

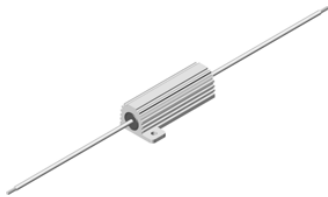
Available in RH-10, RH-25 and RH-50 package size. Except for the terminals all physical and electrical characteristics are the same as standard RH type (see RH, NH data sheet). Consult our engineering department for specific part numbers and detailed data sheets, see email address at the bottom of this page.



MODELS RH-5, RH-10, RH-25, RH-50

Threaded Terminals

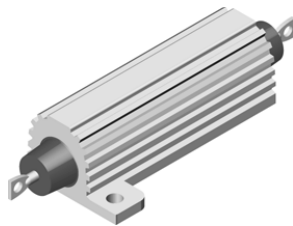
Available in RH-5, RH-10, RH-25 and RH-50 package size. Except for the terminals all physical and electrical characteristics are the same standard RH type (see RH, NH data sheet). Consult our engineering department for specific part numbers and detailed data sheets, see email address at the bottom of this page.



MODELS RH-10, RH-25, RH-50

Teflon Insulated, Flexible Terminals

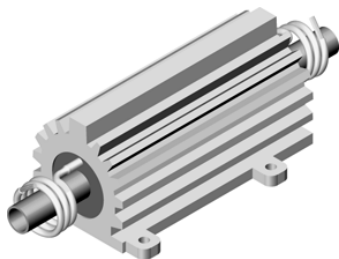
Available in RH-10, RH-25 and RH-50 package size. Except for the terminals all physical and electrical characteristics are the same as standard RH type (see RH, NH data sheet). Consult our engineering department for specific part numbers and detailed data sheets, see email address at the bottom of this page.



MODELS RH-25, RH-50

High Voltage Design

Available in RH-25 and RH-50 package size. The high voltage design incorporates extended molding compound at the terminals to give longer voltage creep distance. Consult our engineering department for specific part numbers and detailed data sheets, see email address at the bottom of this page.



MODEL SPR-1002

High Wattage, Water Cooled

The SPR-1002 is a variation of the NH-250 (non-inductive) resistor that incorporates water cooling for increased power dissipation. The resistor is rated at 450 W when mounted on the standard NH-250 heat and cooled with 1.5 gallons of 25 °C water per minute. Physical dimensions are same as standard NH-250 except 12 AWG teflon insulated flexible wire terminals and 0.5" diameter copper water copper tube that extends 1.5" from each end. Consult our engineering department for specific part numbers and detailed data sheets, see email address at the bottom of this page.