



Solid Tantalum Capacitors (With MnO₂ Electrolyte) Voltage Derating

By Iliia Litvachuck

INTRODUCTION

Solid tantalum capacitors are characterized with a “Fb” basic failure rate (FR) level. To reduce the probability of component failure, the devices should be chosen with respect to application conditions. For this purpose, users have to follow some basic recommendations - namely temperature derating, voltage derating, and current limitation.

FR = Fv x Ft x Fr x Fb, where:

Fv - correction factor due to DC voltage derating

Ft - correction factor due to operating temperature

Fr - correction factor due to added series resistance

Fb - basic failure rate level (1 % / 1000 unit*hours for standard products)

While temperature derating is not always possible in some applications (for instance, automotive), the application’s DC voltage should always match the capacitor’s voltage rating. This is especially important for capacitors with rated voltages of 35 V and higher.

BASICS OF TANTALUM CAPACITORS

The ability of a solid tantalum capacitor to withstand applied DC voltage is determined by the thickness and integrity of its dielectric layer.

To create the dielectric layer, the tantalum pellet’s (slug) surface is oxidized (anodized) to form tantalum pentoxide (Ta₂O₅). This is done by placing the pellet in an electrolyte bath (usually a diluted acid) and applying the DC formation voltage (FV).

For each volt of the FV, a layer of tantalum pentoxide ~17 angstroms thick is formed (an angstrom equals 10⁻⁸ cm, or 0.1 nm). For each specific rating (rating is a combination of capacitance and voltage), the minimum dielectric thickness is defined by the FV, which is about three times higher than the rated voltage (RV). The thicker the dielectric layer, the better its ability to withstand applied electrical stress in working environments.

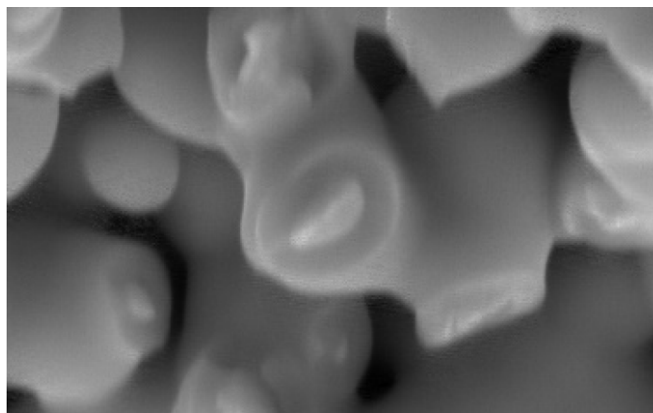


Fig. 1 - Tantalum Particles Wrapped Up With the Dielectric



Solid Tantalum Capacitors (With MnO₂ Electrolyte) Voltage Derating

DIELECTRIC AND CRYSTALLIZATION

An ideal dielectric layer for a tantalum capacitor has an amorphous structure with very high resistivity to direct electrical current. Ratings with higher RV require higher FV for building the thicker dielectric layer. Higher FV forms a thicker dielectric, but the higher energy involved during this process makes it more prone to forming local Ta₂O₅ crystalline inclusions.

Therefore, the probability of such defects in dielectric layers thicker than about 100 nm increases, making them more sensitive to thermo-mechanical stresses (for example, in the reflow process). Once the Ta₂O₅ dielectric crystallizes, its conductivity and the leakage current (DCL) of the capacitor increases.

To minimize this sensitivity, Vishay applies healing steps at various stages of the solid capacitor manufacturing process. However, Vishay recommends added caution and a conservative approach to derating for capacitors with rated voltages of 35 V or higher.

DERATING RECOMMENDATIONS

In working conditions, the voltage on the capacitor is the sum of the DC bias and AC ripple voltage, plus any possible transient peaks. The sum of these voltages (working voltage) should not exceed the RV. This means that the DC voltage applied to the capacitor has to be lower than the RV in order to leave room for the AC ripple voltage and any possible transients, spikes, etc. (see Fig. 2).

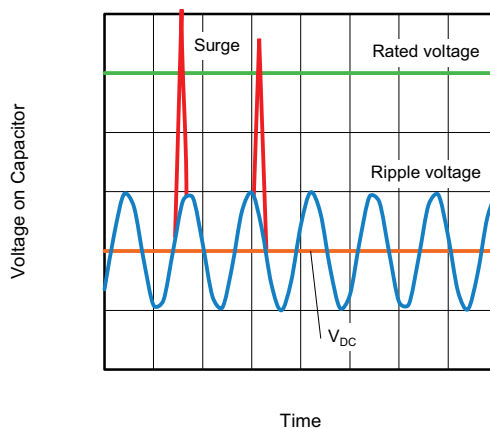


Fig. 2

The maximum working voltage is equal to the RV in the temperature range of -55 °C to +85 °C; then it decreases linearly to $2/3 \times RV$ at the maximum working temperature of +125 °C (for the 293D / TR3 / TP3 series and similar; for series with higher maximum operating temperatures, like the TH3 / TH4, it will go down to $0.5 \times RV$ at extreme temperatures). Above +85 °C, it is common to refer to it as the category voltage. For the ratio between the RV and category voltage, refer to Fig. 3 below.

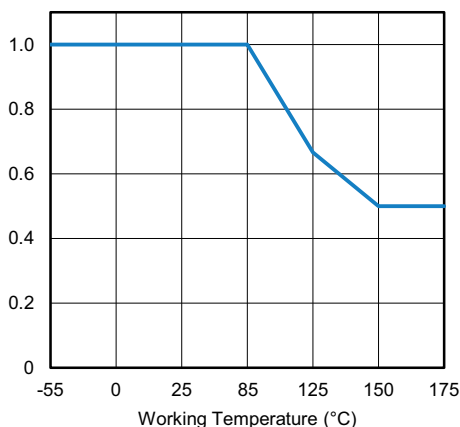


Fig. 3 - Category to Rated Voltage Ratio



The DNA of tech.®

Solid Tantalum Capacitors (With MnO₂ Electrolyte) Voltage Derating

Commercial-grade solid tantalum capacitors with MnO₂ electrolyte, when used at +85 °C with applied voltage equal to the RV and with a 1 Ω series resistor (per each applied volt), are characterized with a FR of 1 % per 1000 working hours. If the applied voltage is less than the RV, and / or the temperature is less than +85 °C, and / or the resistor is > 1 Ω (per applied volt) - then the FR decreases very significantly.

Vishay - along with other manufacturers of tantalum capacitors - recommends derating the DC voltage in order to decrease probability of dielectric breakdown at switch on / off and / or to increase the long term reliability of the capacitors. Similar recommendations are provided by the EIA-809 "Solid Tantalum Capacitor Application Guide" and relevant NASA and military specifications. Usually the recommendation is that the application (working) voltage be between 0.6 to 0.5 of the RV. For rated voltages ≥ 35 V, Vishay recommends an even higher derating ratio. The following table shows a practical approach to derating for several popular voltage rails (working voltages).

RECOMMENDED VOLTAGE DERATING GUIDELINES (below 85 °C)	
VOLTAGE RAIL	CAPACITOR VOLTAGE RATING (V)
1	2
1.3	2.5
2	4
≤ 3.3	6.3
5	10
8	16
10	20
12	25
15	35
24	50 or series configuration
28	63 or series configuration
≥ 32	75 or series configuration

The efficiency of voltage derating for long term reliability improvement (in terms of FIT and MTBF) can be illustrated by using Vishay Tantalum FIT calculator (www.vishay.com/dt/capacitors/tantalum-reliability-calculator-list/) and choosing different application to rated voltage ratios.

GLOSSARY

- **Tantalum pellet (slug):** internal element, pressed of fine tantalum powder and sintered at high temperatures to form a solid, but still porous, body. Pellets have mostly rectangular (for surface-mounted capacitors) or cylindrical (for axial- / radial-leaded capacitors) shapes and serve as the anode plate of a tantalum capacitor
- **Formation voltage (FV):** DC voltage that is applied to a group of tantalum pellets when they are dipped into an electrolyte bath in order to oxidize their surface, creating a dielectric layer of tantalum pentoxide (Ta₂O₅)
- **Rated voltage (RV):** maximum voltage that could be applied to a capacitor in working conditions
- **Crystallization:** conversion of amorphous tantalum pentoxide to the more conductive crystalline form