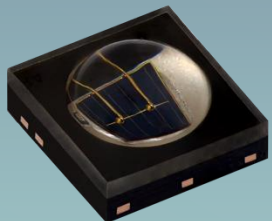


# Smart Door Locks and Intercom Systems



The DNA of tech.®

High power infrared lighting for camera vision



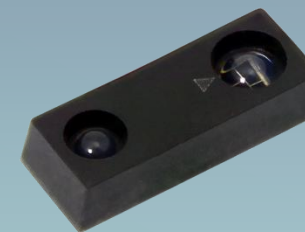
VSMA Series

Touchpad wake up with a low power VCSEL proximity sensor



VCNL36826S

1.5 m wake up with long distance proximity sensors to activate the camera system



VCNL4200

Optical buttons with reflective sensor for simple on/off detection



VCNT2030

Automatically activate the camera system of smart door locks with Vishay's long-distance proximity sensors, detecting motion up to 1.5 meters. High-power IR emitters ensure clear imaging and accurate face recognition under any lighting conditions. Vishay's low distance sensors further enhance functionality by enabling seamless wake-up features for optical buttons or touchpads, delivering a smooth and reliable user experience.

