



The DNA of tech.®

Upgraded Preamplifier Circuit for Remote Control Applications

Feature New Cyllene 2 IC in Compact 2 mm by 2 mm by 0.76 mm QFN Package

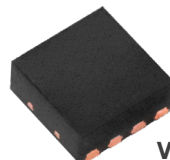
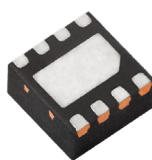


ADVANTAGE

Offer Wider Voltage Range, Enhanced Dark-Ambient Sensitivity, and Improved Performance Under Strong DC Light and Wi-Fi Noise

KEY PRODUCT FEATURES

- ✓ Low current consumption over a wide supply voltage range from 2.0 V to 5.5 V
 - ✓ Increases battery life in mobile devices
- ✓ Offer increased robustness against:
 - ✓ Disturbances from different kinds of lamps
 - ✓ EMI from nearby Wi-Fi antennas operating at 2.4 GHz and 5 GHz
 - ✓ Strong DC light
- ✓ High immunity against ripple noise on the supply voltage



VSOP383..

MARKETS AND APPLICATIONS



CONSUMER

- Entertainment - TVs, STBs, video game systems, soundbars, audio equipment, and more

ADDITIONAL BENEFITS

- As enhanced drop-in replacements for existing solutions - with no mechanical differences and similar electrical characteristics - the devices help save costs by eliminating the need for PCB redesigns
- Designed to be used with a photodiode for IR remote control

RESOURCES



[Order Samples](#)



[Product Page](#)



[Contact Us](#)



[Application Notes](#)



[Related Documents](#)



[3D Models](#)



[Design Tools](#)