



The DNA of tech.®

VT171P and VT172U High Dome Transmissive Sensors Single- and Dual-Channel Devices in Compact 5.5 mm x 4 mm x 5.7 mm SMD Package

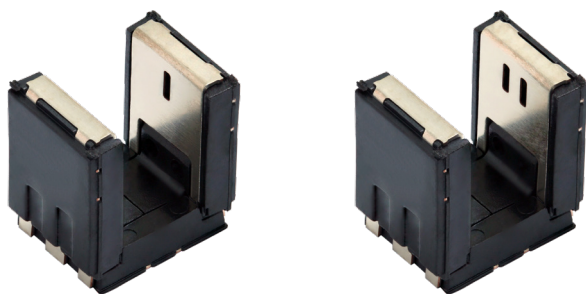


ADVANTAGE

Offer Greater Vertical Headroom and Design Flexibility for Position Sensing and Optical Encoding in Industrial and Consumer Applications

KEY PRODUCT FEATURES

- ✓ Typical output current of 1.5 mA
- ✓ 3 mm gap width and 0.3 mm aperture width
- ✓ Operate at a wavelength of 950 nm
- ✓ Typical rise and fall times of 14 μ s and 21 μ s, respectively
- ✓ Moisture Sensitivity Level rating of 1 (MSL1)



RESOURCES



MARKETS AND APPLICATIONS



CONNECTIVITY

- Telecom Mobile Devices



CONSUMER

- Entertainment and Appliances
- Health and Care



INDUSTRIAL

- Automation and Infrastructure
- Drives and Tools
- Home and Building Controls



COMPUTER

- Peripherals



MEDICAL

- Instrumentation, Monitoring

ADDITIONAL BENEFITS

The single-channel VT171P includes an infrared emitter and phototransistor detector located face-to-face in a surface-mount package, while the dual-channel VT172U includes an infrared emitter and two phototransistor detectors. Both sensors can detect motion and speed. With dual channels, the VT172U can also be used to detect direction.