



The DNA of tech.®

VCNL36829UM Short Distance Proximity Sensor

# Offers Idle Current Down to 5 $\mu$ A and 14-Bit Resolution in Compact Space-Saving Package



## ADVANTAGE

Device features a VCSEL and smart dual I<sup>2</sup>C slave address, ideal for battery-powered consumer applications

## MARKETS AND APPLICATIONS



### CONSUMER

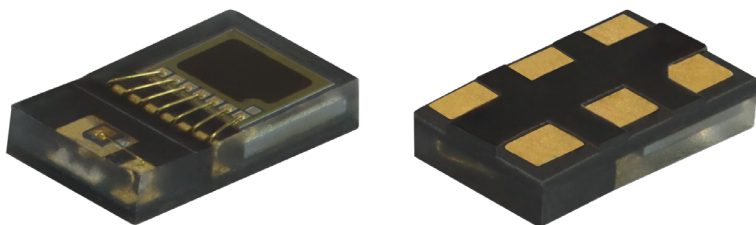
- Entertainment
- Consumer Appliances

## KEY PRODUCT FEATURES

- ✓ 1.6 mm x 1.0 mm x 0.35 mm transparent mold package
- ✓ Sunlight cancellation immunity up to 200 klx
- ✓ Isolation wall design delivers excellent crosstalk immunity
- ✓ Typical rated supply voltage of 1.8 V
- ✓ A smart persistence scheme ensures accurate sensing and faster response time
- ✓ Programmable interrupt function

## ADDITIONAL BENEFITS

- The sensor's programmable interrupt function allows designers to specify high and low thresholds, reducing continuous communication with the microcontroller and lowering system power consumption
- Integrates a vertical-cavity surface-emitting laser (VCSEL), photodiode, application-specific integrated circuit (ASIC), and 16-bit ADC



## RESOURCES



[Order Samples](#)



[Infographics](#)



[3D Models](#)



[Application Notes](#)



[Related Documents](#)



[Contact Us](#)



[Product Page](#)