

200 V FRED Pt[®] Ultrafast Rectifiers in DFN6546A Package

Deliver High Current Ratings Up to 15 A and Provide Improved Thermal Performance and Efficiency

**AUTOMOTIVE
GRADE**

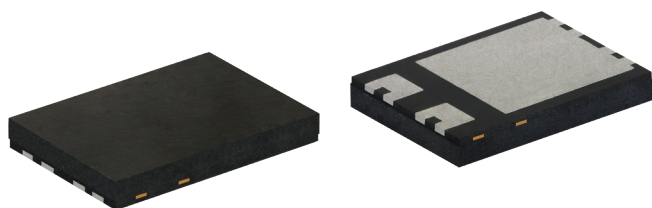


ADVANTAGE

Features a low 0.88 mm profile, wettable flanks allow easy inspection with AOI (automated optical inspection), no X-ray.

KEY PRODUCT FEATURES

- ✓ Current ratings from 6 A to 15 A
- ✓ Low forward voltage drop of 0.75 V
- ✓ Operate over a wide temperature range from -55 °C to +175 °C
- ✓ Offered in commercial and AEC-Q101 qualified versions
- ✓ Compact low profile package (6.5 mm x 4.6 mm x 0.88 mm)
- ✓ Fast reverse recovery time (t_{rr}) and low reverse recovery charge (Q_{rr})



RESOURCES



[Order Samples](#)



[Product Page](#)

Americas



[Contact Us](#)

Asia



[Contact Us](#)

Europe



[Contact Us](#)



[Application Notes](#)

MARKETS AND APPLICATIONS



CONNECTIVITY

- Telecom mobile infrastructure
- Telecom fixed infrastructure



CONSUMER

- Consumer appliances



MOBILITY

- Automotive and micro mobility
- Automotive intelligence (smart vehicle) and electrification (e-powertrain)



ENERGY SECTOR

- Generation and exploration



INDUSTRIAL

- Drives and tools
- Automation and infrastructure



COMPUTER

- Computer



MEDICAL

- Medical instrumentation, monitoring, therapeutics



ADDITIONAL BENEFITS

- The devices' optimized copper mass design and advanced die placement technology allow for superior thermal performance that enables operation at higher current ratings
- Compared to 200 V components in the SMPC (TO-277A) package with the same footprint, the rectifiers offer a 10 % lower profile and a 50 % higher current rating

Part Number	I _{F(AV)} (A)	V _R (V)	I _{FSM} (A) Per Diode	V _F at I _F		T _J max. (°C)	Circuit Configuration	AEC-Q101 Qualified
				V _F (V)	I _F (A)			
VS-6ERH02-M3	6	200	120	0.75	6	175	Single	No
VS-6ERH02HM3	6	200	120	0.75	6	175	Single	Yes
VS-8ERH02-M3	8	200	131	0.75	8	175	Single	No
VS-8ERH02HM3	8	200	131	0.75	8	175	Single	Yes
VS-10ERH02-M3	10	200	134	0.75	10	175	Single	No
VS-10ERH02HM3	10	200	134	0.75	10	175	Single	Yes
VS-15ERH02-M3	15	200	264	0.75	15	175	Single	No
VS-15ERH02HM3	15	200	264	0.75	15	175	Single	Yes
VS-6CRH02-M3	2 x 3	200	66	0.75	3	175	Dual	No
VS-6CRH02HM3	2 x 3	200	66	0.75	3	175	Dual	Yes
VS-8CRH02-M3	2 x 4	200	70	0.75	4	175	Dual	No
VS-8CRH02HM3	2 x 4	200	70	0.75	4	175	Dual	Yes
VS-10CRH02-M3	2 x 5	200	77	0.75	5	175	Dual	No
VS-10CRH02HM3	2 x 5	200	77	0.75	5	175	Dual	Yes
VS-15CRH02-M3	2 x 7.5	200	124	0.75	7.5	175	Dual	No
VS-15CRH02HM3	2 x 7.5	200	124	0.75	7.5	175	Dual	Yes