

VOMHA43A - 1 MBd High Speed Optocoupler

Automotive Device in New SOP-5 Package with a Narrow Width of 3.6 mm Saves Space While Improving Signal Transmission

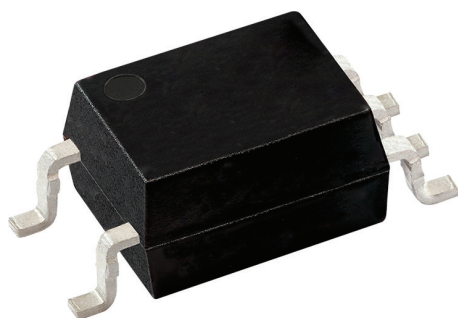



ADVANTAGE

Offers industry-best minimum CMTI of 50 kV/ μ s and maximum repetitive peak isolation voltage of 707 V_{peak}

KEY PRODUCT FEATURES

- ✓ High CTR at low forward current
- ✓ Very high common mode transient immunity of 50 kV/ μ s
- ✓ Operating temperature range: -40 °C to +125 °C
- ✓ AEC-Q102 qualified
- ✓ Comparative tracking index (CTI) of 400
- ✓ Open collector output function



MARKETS AND APPLICATIONS



CONNECTIVITY

- Telecom fixed infrastructure



MOBILITY

- Automotive
- Automotive electrification (e-powertrain)



INDUSTRIAL

- Automation
- Infrastructure
- Home and building controls

ADDITIONAL BENEFITS

- The device's minimum CMTI - which is more than double that of the closest competing device - provides enhanced robustness against electrical spikes and RF and EMI issues
- The device's isolation voltage performance of 707 V_{peak} meets the requirements of 400 V battery systems
- A Faraday shield on the detector chip allows the device to reject and minimize high input to output common mode transient voltages

RESOURCES

