



VTVSxxGSMF SERIES

400 W TVS IN SMF (DO-219AB) PACKAGE

IN A NUTSHELL



High surge capability of 400 W at 10/1000 μ s



Low profile (1 mm) SMF (DO-219AB) package

HALOGEN FREE

RoHS COMPLIANT

AEC-Q101 Qualified

COMPETITIVE ADVANTAGE

- Low avalanche breakdown voltage tolerance allows tighter design of electronic circuit
- Lower avalanche breakdown voltage tolerance = lower clamping voltage tolerance



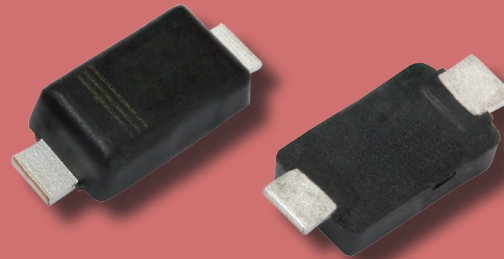
AVALANCHE BREAKDOWN VOLTAGE TOLERANCE



CLAMPING VOLTAGE TOLERANCE

- Important when a transient voltage signal must be clamped close to the max voltage range!

FIRST TO FEATURE ACCURATE 2% Vz*



*Only parts with 5% Vz (breakdown voltage tolerance) offered by competitors



Low leakage current

Low noise technology



Very fast response time

Precise protection for key components



VTVS Series consists of 23 devices (VTVS5V0ASMF to VTVS63GSMF)

APPLICATIONS

Ideal for space-constrained electronics



PRIMARY CHARACTERISTICS

V _{BR}	6.4 V to 78.2 V
V _{WM}	5.0 V to 63 V
P _{PPM}	400 W
T _{J max.}	175 °C
Polarity	Unidirectional
Package	DO-219AB (SMF)