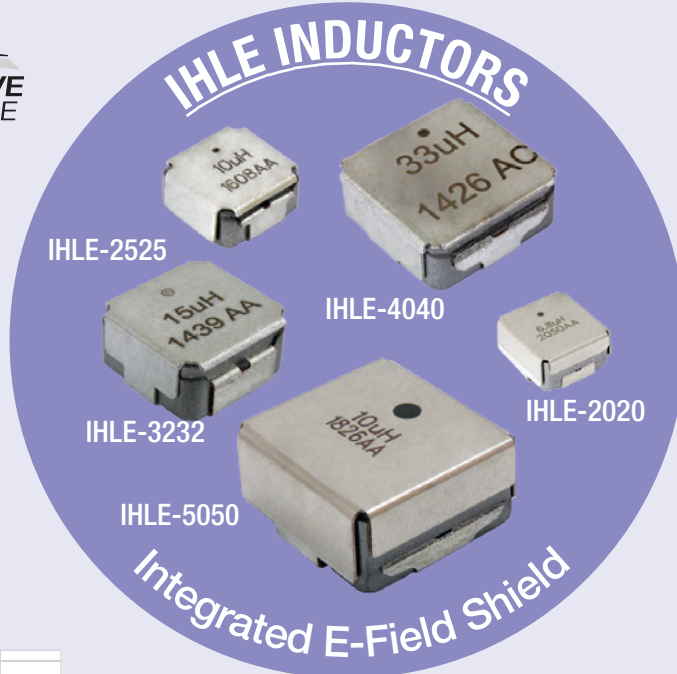
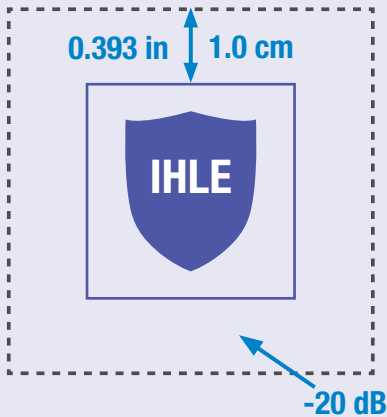




IHLE[®] HIGH CURRENT INDUCTORS

WITH INTEGRATED E-FIELD SHIELD

Reduced noise

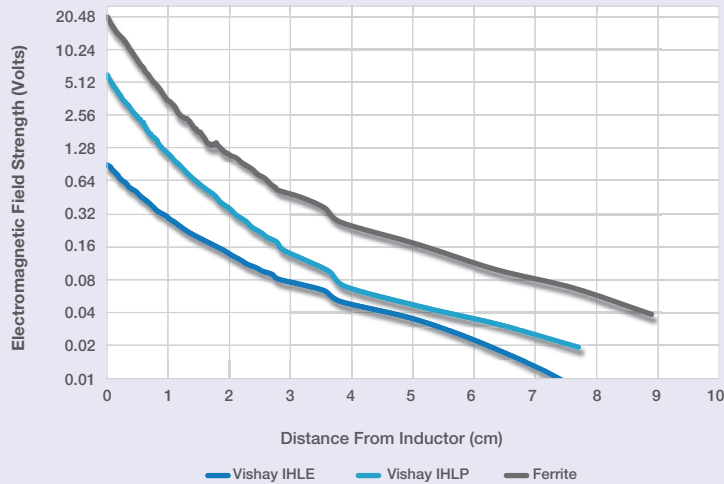


High temperature operation to +155 °C



Compact size with no additional external EMI shielding required

ELECTROMAGNETIC FIELD STRENGTH VS. DISTANCE FROM INDUCTOR



APPLICATIONS

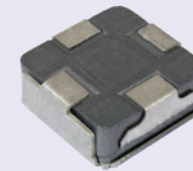


AUTOMOTIVE

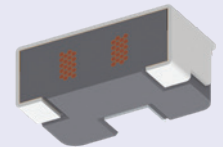


DC / DC INVERTERS

BOTTOM VIEW



CROSS-SECTION



FOOTPRINT AND PROFILE CAPABILITY

IHLE-2020	IHLE-2525	IHLE-3232	IHLE-4040	IHLE-5050
3.4 mm	3.4 mm	4.4 mm	4.4 mm	6.8 mm

Shown at actual size (when viewed or printed at 100 %)