



The DNA of tech.®

1 Form A Solid-State Relay in Space-Saving SOP-4 Package Industrial-Grade Device Offers 600 V Load Voltage and Isolation Voltage of 3750 V_{RMS}

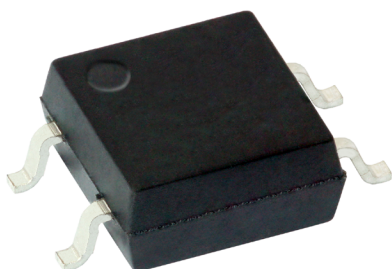


ADVANTAGE

Combines fast turn-on time of 0.3 ms typical with low leakage current of 2 nA in low profile package

KEY PRODUCT FEATURES

- ✓ Load current: 50 mA
- ✓ Low on resistance $R_{ON} = 40 \Omega$ (typ.)
- ✓ Fast switching: $t_{on} = 0.3$ ms (typ.), $t_{off} = 0.15$ ms (typ.)
- ✓ RoHS-compliant, halogen-free, and Vishay Green
- ✓ Automotive-qualified version is available on request, please contact local sales for more information



MARKETS AND APPLICATIONS



MOBILITY

- Automotive electrification (e-Powertrain)



ENERGY SECTOR

- Distribution and management
- Storage



INDUSTRIAL

- Drives and tools
- Infrastructure
- Home and building controls

ADDITIONAL BENEFITS

- The optically isolated device combines a state of the art infrared emitter and photovoltaic diode to deliver its fast turn-on time, which makes it ideal for safety-critical applications
- The solid-state relay's low leakage current allows the device to be used in sensitive low level applications without affecting the signal, while its compact SOP-4 package saves space over competing solutions

RESOURCES



[Order Samples](#)



[Product Page](#)



[Contact Us Americas](#)