



# CDMM

## HIGH VOLTAGE MOLDED CHIP DIVIDER

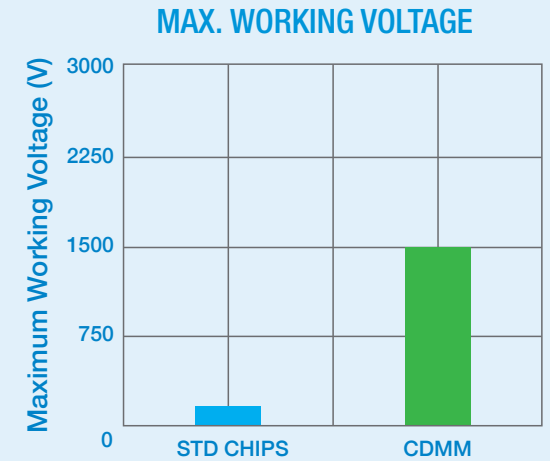
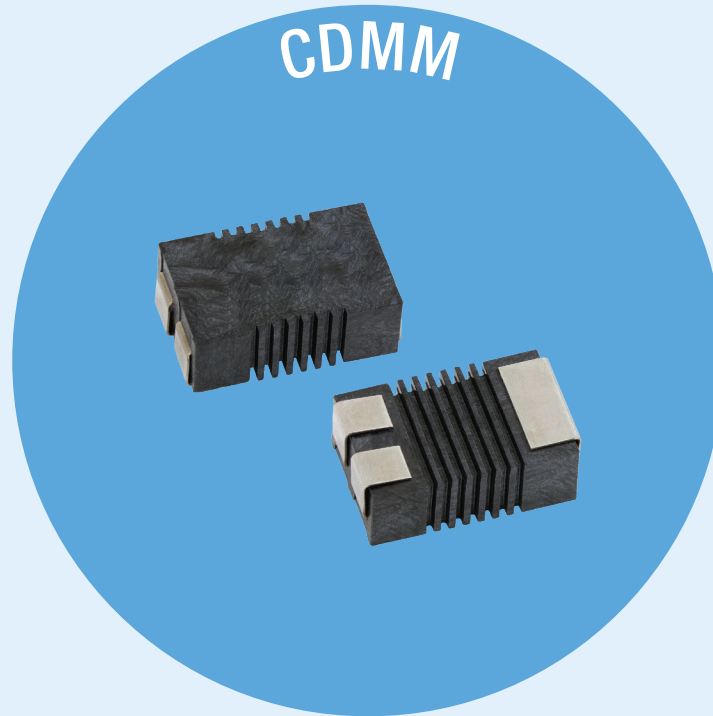
# IN A NUTSHELL

6 - 8 STANDARD RESISTORS = 1 CDMM

1.5 kV

1.5 kV

1 CDMM resistor rated at 1500 V each

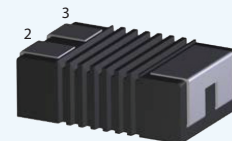
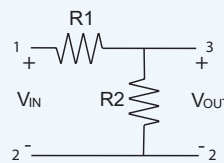
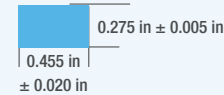


### FEATURES

- Specifically designed for EV and HV automotive applications
- AEC-Q200 qualified
- Compliant terminations
- Sulfur-resistant
- High creepage distance
- Wide resistance values and ratios
- Good TCR tracking and ratio tolerances vs. individual components

### FOOTPRINT

Shown at actual size



### APPLICATIONS

- Industrial
- Consumer
- Automotive

